



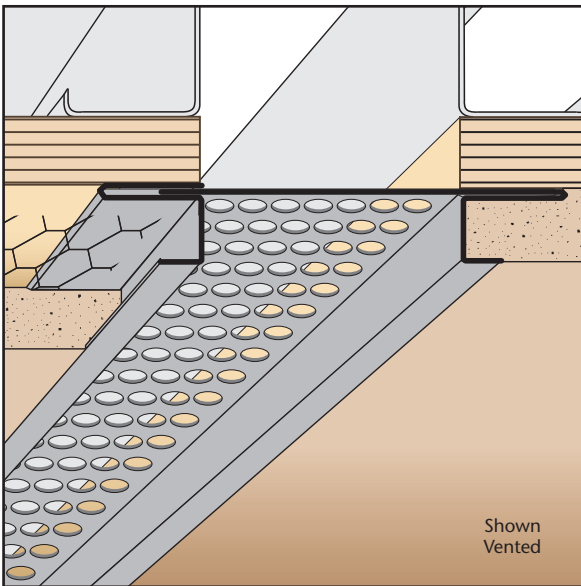
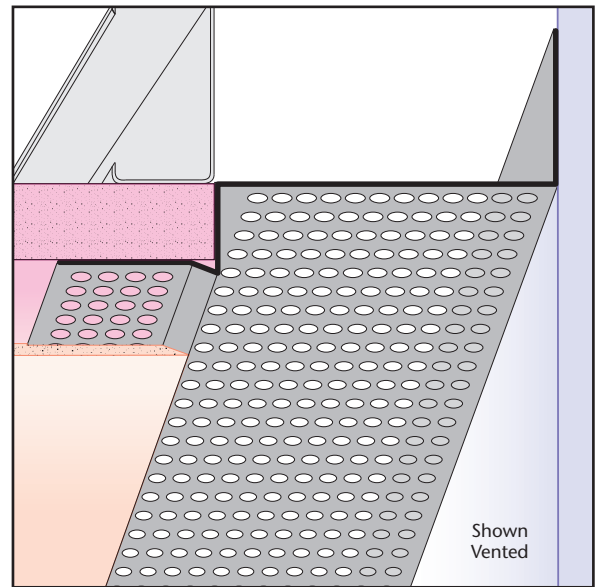
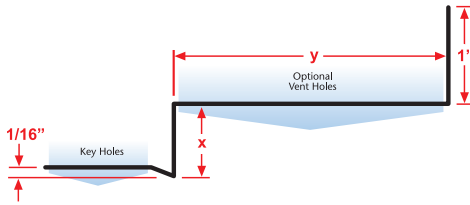
DWT: Drywall Wall Trim

- Available With Vent Holes
- Available in Copper, Galvanized Steel, Zinc, Stainless Steel or Aluminum

A multi-functional drywall product that makes a smooth transition from a drywall ceiling to the wall. Includes key holes for proper plaster adhesion.

Note: Aluminum is not available with 1/8" vent holes.

Length	X Size	Y Size
10'	1/2"	1/2"
	5/8"	3/4"
		1"
		1 1/2"
		2"
		2 1/2"
		3"
		3 1/2"
		4"
		4 1/2"



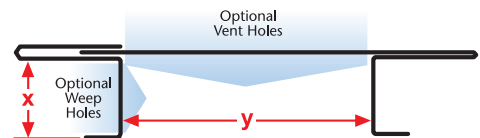
ECS: Expansion Channel Screed (#40) - 2 pc.

- Available With 1/8", 1/4" Vent Holes or No Vent
- Available in Copper, Galvanized Steel, Zinc, Stainless Steel or Aluminum

Adjustable version of our Plaster Channel Screed that permits movement in a double stud condition. Can be vented for air flow.

Note: Aluminum is not available with 1/8" vent holes.

Length	X Size	Y Size
10'	3/8"	1/2"
	1/2"	3/4"
	5/8"	1"
	3/4"	1 1/2"
	7/8"	2"
	1"	2 1/2"
	1 3/8"	3"
		3 1/2"



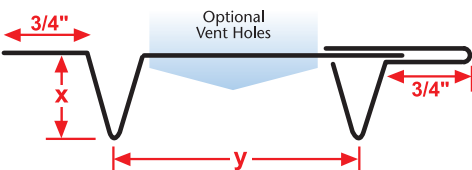
EVS: Expansion Vent Screed - 2 pc.

- Available With 1/8", 1/4" Vent Holes or No Holes
- Available in Copper, Galvanized Steel, Zinc, Stainless Steel or Aluminum

Adjustable version of our standard vent screed that permits movement in a double stud condition while providing required airflow into space above.

Can also be ordered non-vented for use as a horizontal expansion joint providing movement capabilities at a floor line.

Note: Aluminum is not available with 1/8" vent holes.



Length	X Size	Y Size
10'	3/8"	3/4"
	1/2"	1"
	3/4"	1 1/2"
	7/8"	2"
	1"	2 1/2"
	1 3/8"	3"
		3 1/2"
		4"
		4 1/2"
		5"
		5 1/2"
		6"

