

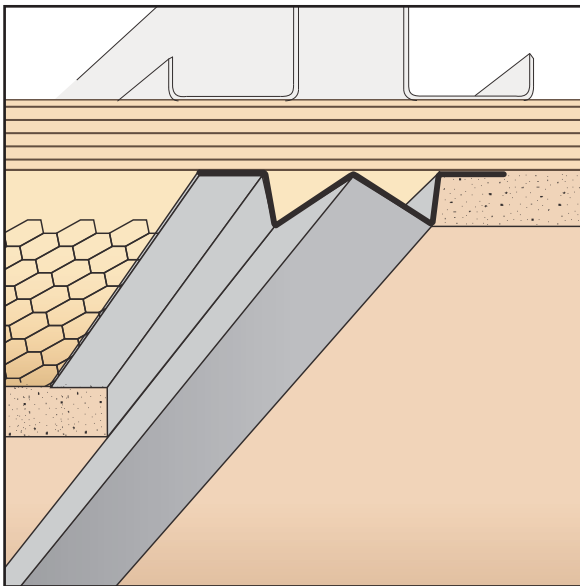
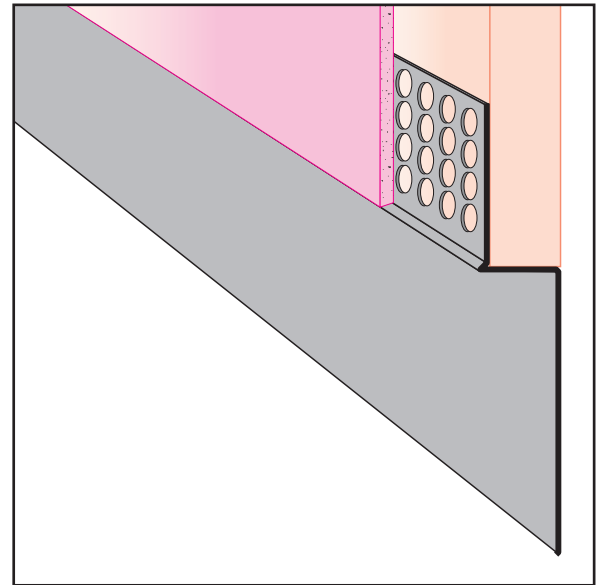
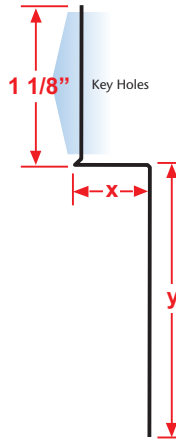
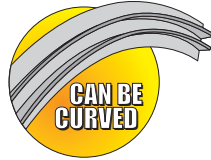


DTR: Drywall Termination Reveal

- Available in Copper, Galvanized Steel, Zinc, Stainless Steel or Aluminum

Drywall reveal molding used at door frames and wall base application. Includes key holes for proper plaster adhesion.

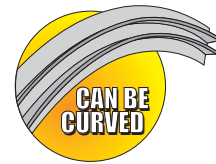
Length	X Size	Y Size
10'	1/2"	1/2"
	5/8"	3/4"
		1"
		1 1/2"
		2"
		2 1/2"
		3"
		3 1/2"
		4"



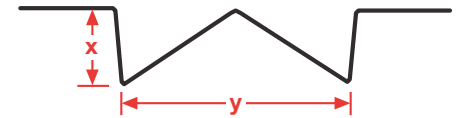
DVG: Double V Groove

- Available in Copper, Galvanized Steel, Zinc, Stainless Steel or Aluminum

A plaster channel screed that creates a decorative reveal with an interesting and unique appearance.



Length	X Size	Y Size
10'	1/2"	3/4"
	5/8"	1"
	3/4"	1 1/2"
	7/8"	2"
		1"
		2 1/2"
		1 1/2"
		3"
		1 3/8"

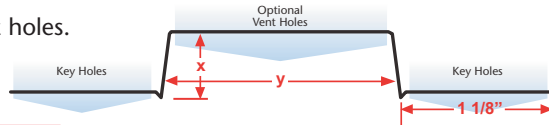


DWR: Drywall Reveal

- Available With 1/8", 1/4" Vent Holes or No Vent
- Available in Copper, Galvanized Steel, Zinc, Stainless Steel or Aluminum

Creates a decorative reveal in the drywall. The molding is attached after the drywall is installed, minimizing labor. Can be vented to permit air flow. Includes key holes for proper plaster adhesion.

Note: Aluminum is not available with 1/8" vent holes.



Length	X Size	Y Size
10'	1/2"	1 1/2"
	5/8"	2"
		2 1/2"
		3"
		3 1/2"
		4"
		4 1/2"

