

Ventilation

- Weep Hole Sizes: 1/8", 1/4" & 1/2"
- Vent Hole Sizes: 1/8" & 1/4"

Where determined necessary by the building official due to atmospheric or climatic conditions, enclosed attics and enclosed rafter spaces formed where ceilings are applied directly to the underside of roof rafters shall have cross ventilation for each separate space by ventilating openings protected against the entrance of rain and snow. The net free ventilating area shall not be less than 1/150 of the area of space ventilated.

Quick Hole Reference

Vent Holes: Are for air flow.

Weep Holes: Are for water/moisture release.

Key Holes: Are to give mud/stucco something to grab on to.

Soffit Vent Net Free Ventilating Area

Hole Size	Point-to-Point	Ground				
		3/8"	1/2"	3/4"	7/8"	1 3/8"
1/8"	0.75		0.59	0.59		
1/8"	1.00	1.77	1.77	1.18		
1/8"	1.50	2.36	2.36	2.36	2.36	
1/8"	2.00	4.12	4.12	3.53	3.53	3.53
1/8"	2.50	5.30	5.30	4.12	4.12	4.12
1/8"	3.00	5.89	5.89	5.89	5.89	5.89
1/8"	3.50	7.07	7.07	7.07	6.48	6.48
1/8"	4.00	8.25	8.25	8.25	7.66	7.66
1/4" (J Series)	2.00	6.28	6.28	6.28	6.28	6.28
1/4" (J Series)	2.50	7.85	7.85	7.85	7.85	7.85
1/4" (J Series)	3.00	11.00	11.00	11.00	11.00	11.00
1/4" (J Series)	3.50	12.57	12.57	12.57	12.57	12.57
1/4" (J Series)	4.00	14.14	14.14	14.14	14.14	14.14

NFVA is stated in square inches per foot of vent length.

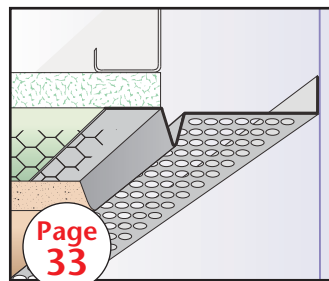
Note: 1/8" vent holes are not available in aluminum.

SolidGround®

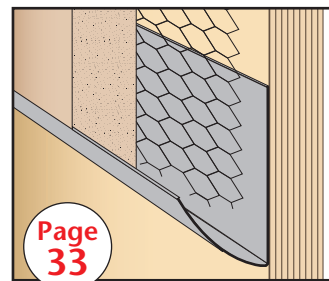
Stockton Products' unique SolidGround® design on its Superior® Moisture Management and Protection line of trims features a solid hem on the return key and plaster ground which prevents moisture penetration in a horizontal application. By eliminating the traditional closed hem design that could be a source of moisture penetration at the plaster ground/reveal transition, the SolidGround® design provides a solution for moisture protection issues when using plaster stops, reveals and trims in a horizontal condition.

Stockton Products' Metal

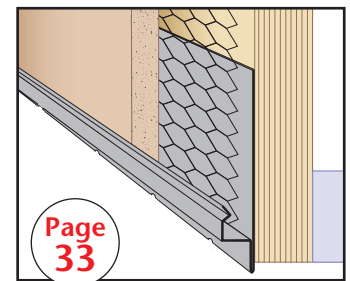
A variety of standard and custom metal products are available for ventilation, water management, expansion and decorative purposes.



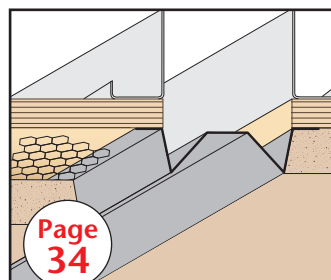
Page 33
AWF:
Attic Wing Fascia (J-2)



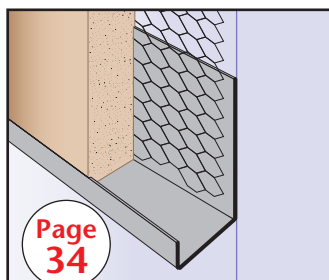
Page 33
BNB:
Bullnose Bead



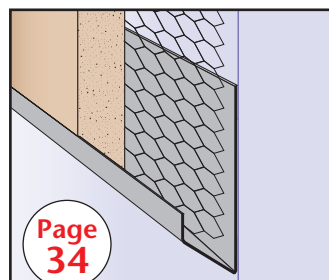
Page 33
BSS:
Blind Stop



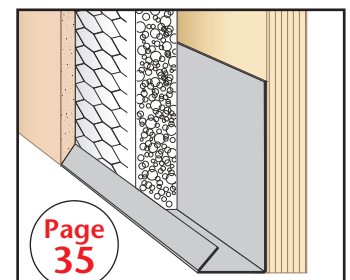
Page 34
C-G:
Chamfer Groove



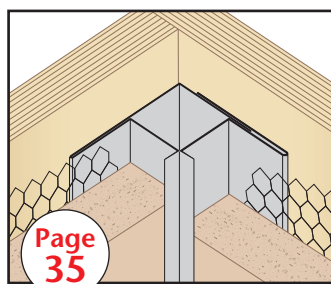
Page 34
CDB:
Casing Drip Bead



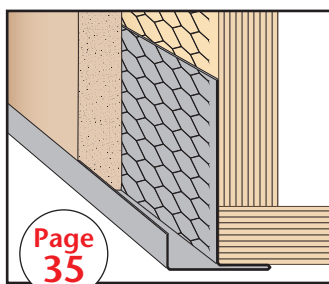
Page 34
CPB:
Casing Plaster Bead



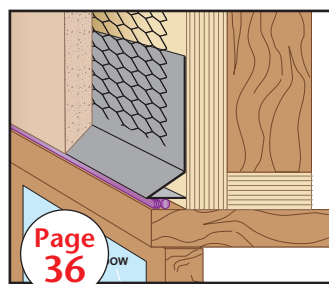
Page 35
CSB:
Casing Starter Bead



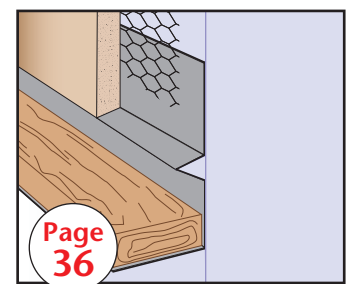
Page 35
CSJ:
Corner Slip Joint - 2 pc.



Page 35
CTM:
Corner Transition Mold



Page 36
DHF:
Drip Head Flashing (#6)



Page 36
DKD:
Deck Diato