

SAll: StockAid® II

DoubleWire has an additional wire on the outside edges to provide additional nail points. Three nose wire lower cost product used for exterior corner reinforcing with conventional 3-coat 7/8" stucco. Available in stainless steel to be used with absolute confidence in high humidity and salt air environments.

Galvanized: 10SAII
Stainless Steel: 10SSSAIID

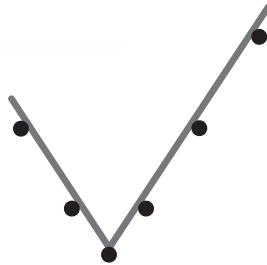
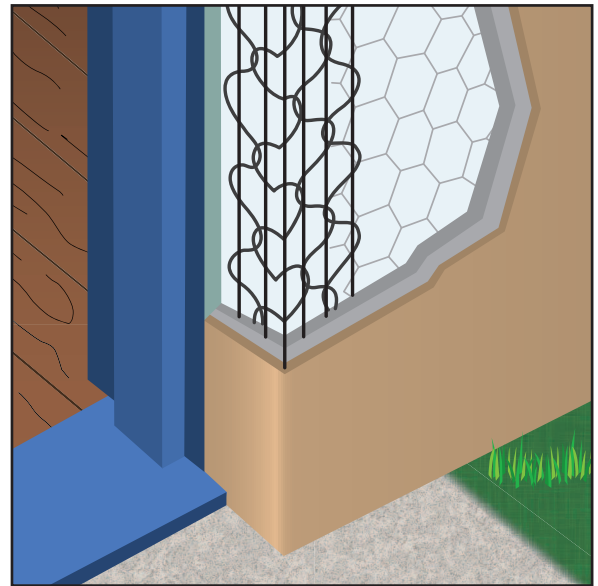


| Length | Feet Per Carton |
|--------|-----------------|
| 10 Ft. | 400 Ft./Ctn. |

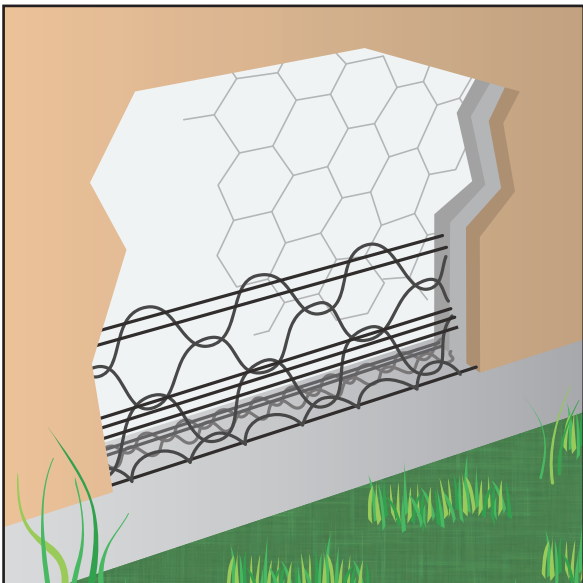
SF: Short Flange

Shaped for exterior or interior corners on doors, windows and panel systems where a short flange or stop is needed. It offers one standard 2 1/2" leg and one short 1 1/2" leg. Available in stainless steel to be used with absolute confidence in high humidity and salt air environments.

Galvanized: 10SF
Stainless Steel: 10SSSF



| Length | Feet Per Carton |
|--------|-----------------|
| 10 Ft. | 400 Ft./Ctn. |



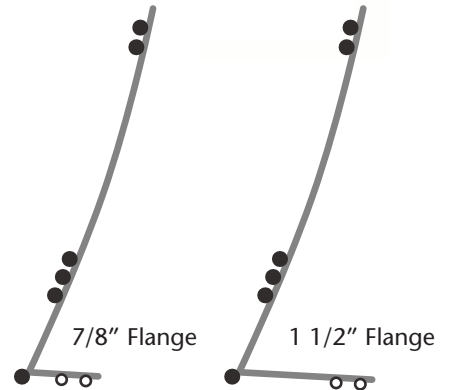
WA: WeepAid®

- Available In 7/8" and 1 1/2" Flange

Designed to act as a foundation screed for conventional 3-coat 7/8" stucco, WeepAid® maximizes the weep area and reduces the opportunity for stucco to stain or crack. Allows any moisture that gets behind the stucco to drain.

Easy to tailor and trim. Can be used to form pop-outs around windows and doors as well as other "Ginger-Bread" details.

Galvanized: 10WA78 (7/8"), 10WA112 (1 1/2")
Stainless Steel: 10SSWA78 (7/8"), 10SSWA112 (1 1/2")



| Length | Feet Per Carton |
|--------|-----------------|
| 10 Ft. | 300 Ft./Ctn. |