

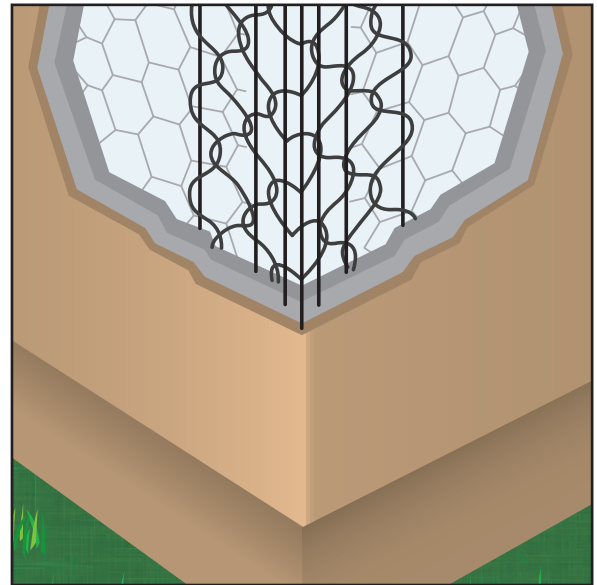
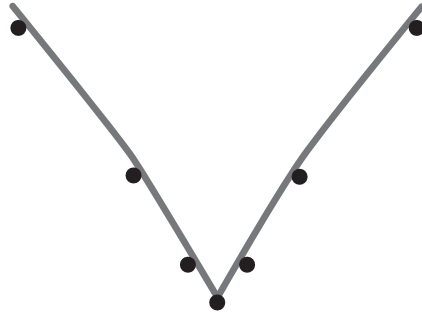
WIRE

LF: Long Flange

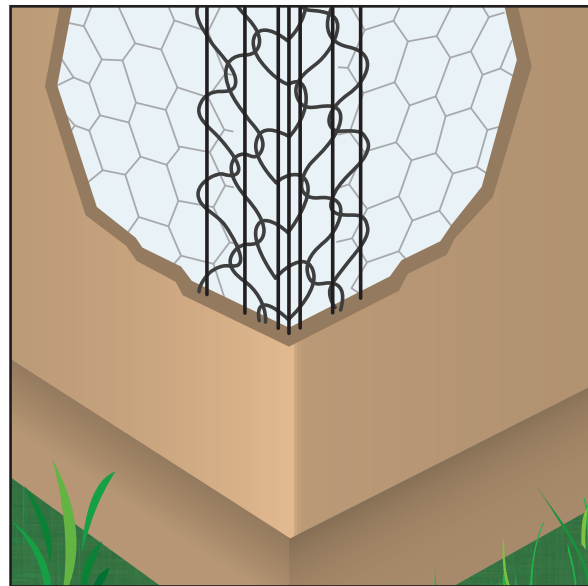
Designed for extra thick fireproofing. This product is engineered for exterior or interior reinforcing with up to 2 1/2" fireproofing material. It has 3 1/4" legs. Available in stainless steel to be used with absolute confidence in high humidity and salt air environments. Extra nose wires provide increased structural rigidity. Can be used with irregular framing.

Galvanized: 10LF

Stainless Steel: 10SSLF



Length	Feet Per Carton
10 Ft.	250 Ft./Ctn.

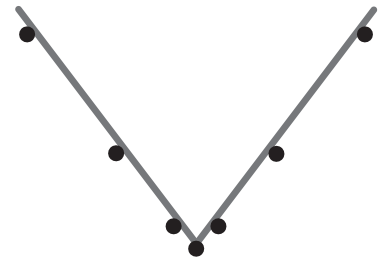


OC: One-Coat

Patterned after CornerAid® but with a tight fit on the corner. It is to be used over an insulated foam board system for 1/4" to 3/8" EIFS and One Coat stucco. It has standard 2 1/2" legs. Available in stainless steel to be used with absolute confidence in high humidity and salt air environments.

Galvanized: 10OC

Stainless Steel: 10SSOC



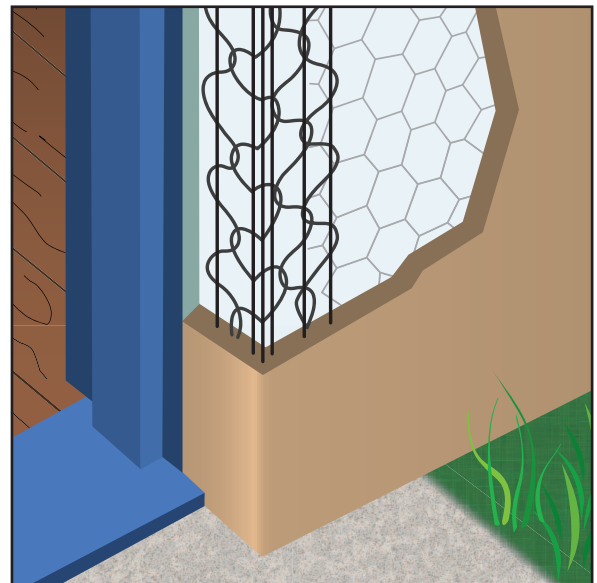
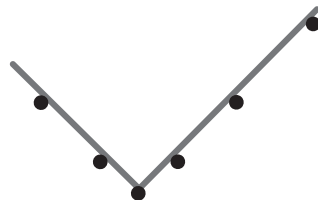
Length	Feet Per Carton
10 Ft.	400 Ft./Ctn.

OCSF: One-Coat Short Flange

This multi-purpose piece is used for both exterior insulation "Hard Coat" and "One-Coat" systems. It is especially useful around doors, windows, and as a "Return" or "Stop". Length of flange is 1 1/4".

Galvanized: 10OCSF (1 1/4")

Stainless Steel: 10SSOCSF (1 1/4")



Length	Feet Per Carton
10 Ft.	400 Ft./Ctn.