

# WIRE

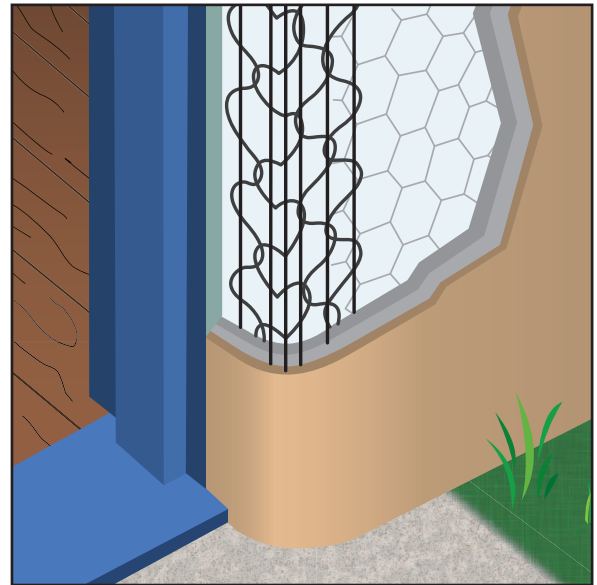
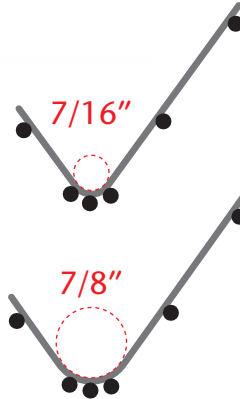
## BNSF: Bullnose Short Flange

- Available In 7/16" and 7/8" Radius

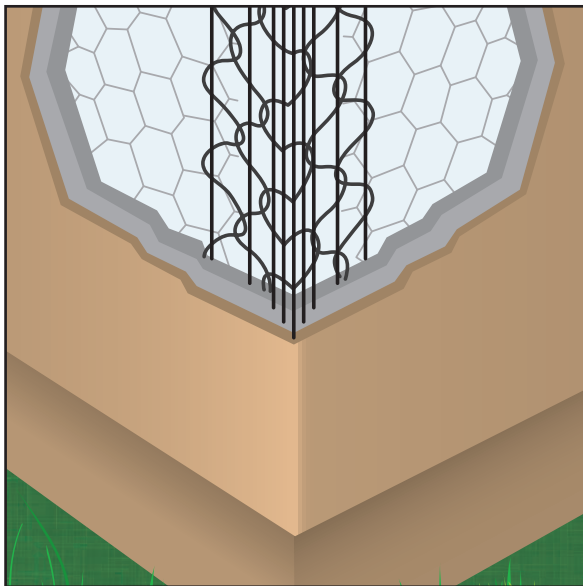
This product combines the features of regular Bullnose and Short-Flange. It is used with Spanish or Mediterranean architecture for rounded corners, sills and ledges. It has a 2 1/2" leg and a 1 1/2" leg and comes in both a 7/16" radius (ping pong ball size) and 7/8" radius (tennis ball size). Extra nose wire offers increased rigidity and stability.

**Galvanized:** 10BNSF716 (7/16"),  
10BNSF78 (7/8")

**Stainless Steel:** 10SSBNSF716 (7/16"),  
10SSBNSF78 (7/8")



Length	Feet Per Carton
10 Ft.	400 Ft./Ctn.



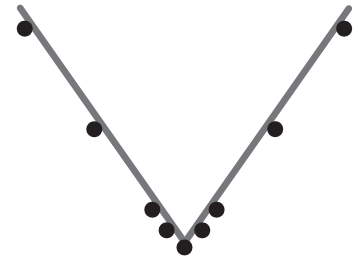
## CA: CornerAid®

The premier product used for exterior corner reinforcing with conventional 3-coat 7/8" stucco. It features a five nose wire configuration that develops a strong, mechanical bond and a solid plaster corner. Full nine-wire construction yields a rigid straight corner. Available in stainless steel to be used with absolute confidence in high humidity and salt air environments. Extra nose wires provide increased structural rigidity.

**Galvanized:** 10CA  
**Stainless Steel:** 10SSCA



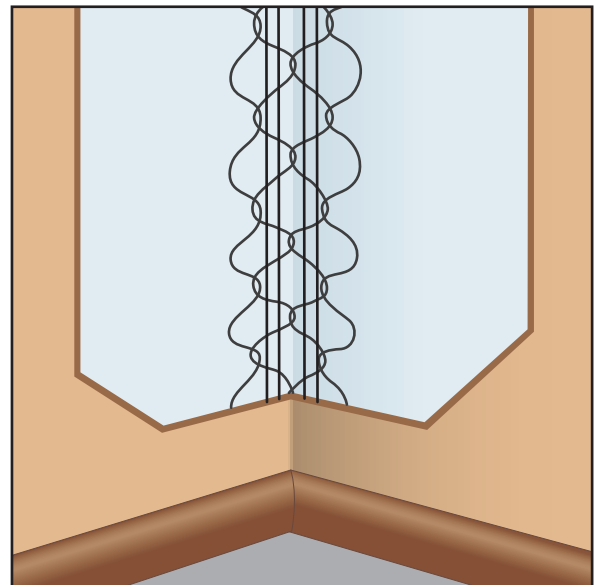
Length	Feet Per Carton
10 Ft.	400 Ft./Ctn.



## CRT: 2 x 2 Cornerite

Our original product, now in its sixth decade. It is an interior piece designed specifically for use as a plaster reinforcement on inside corners - can be flattened for butterflies. It has 2" legs.

**Galvanized:** 4CRT  
**Stainless Steel:** 4SSCRT



Length	Feet Per Carton
4 Ft.	800 Ft./Ctn.