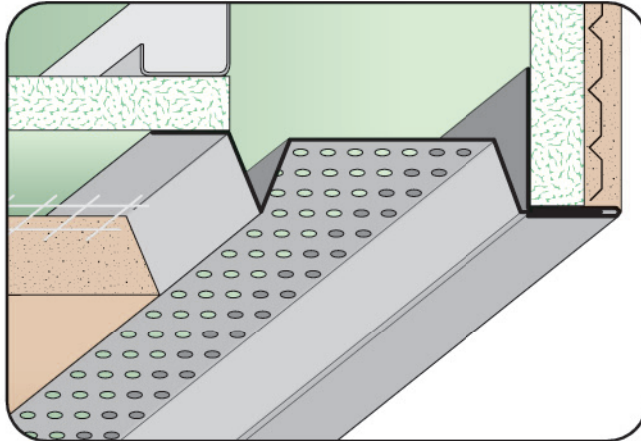




**CUSTOM SIZES AVAILABLE!**

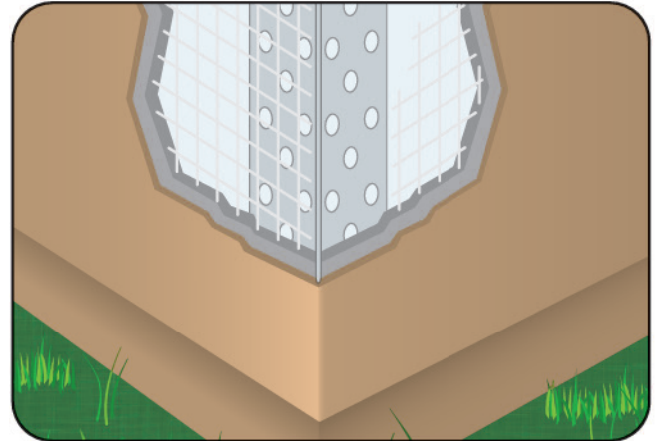
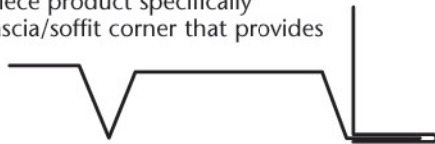
Stockton Custom Fabrication  
877-786-2587  
custom@StocktonProducts.com



### TPC: Two Piece Expansion Corner (2 Piece)

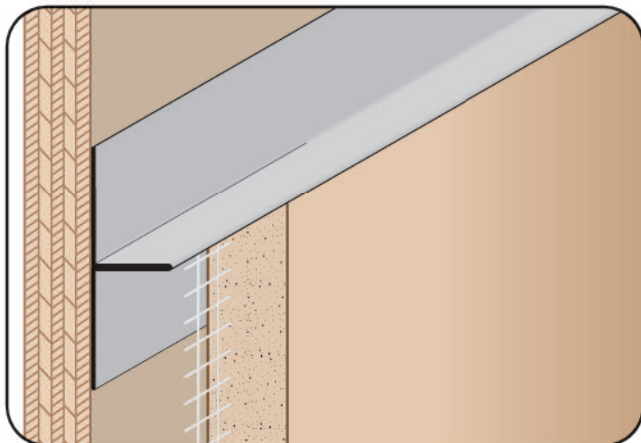
- Available With 1/8", 1/4" Vent Holes or No Holes
- Available in Aluminum, Copper, Galvanized Steel, Bonderized, Galvalume®, Stainless Steel or Zinc

A functional two piece product specifically designed for the fascia/soffit corner that provides a reveal and allows movement at this condition.



### TRC: Tru-Corner®

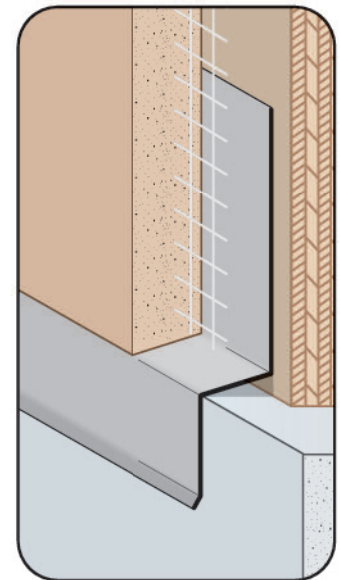
- Available in Stainless Steel or Zinc
- A solid metal trim that provides a sharp square exterior corner. Longer attachment legs help assure proper alignment to achieve a straight and true corner, particularly on irregular framing. Includes 1/4" diameter staggered key holes to aid in keying the stucco. Available in stainless steel and zinc for maximum anti-corrosive protection.
- Note:** Ground depth (X Sizes) and leg lengths (Y Sizes) can not be mixed. Sizes are as listed.



### TRM: T Reveal Mold

- SolidGround® Design For Moisture Protection
- Available in Aluminum, Copper, Galvanized Steel, Bonderized, Galvalume®, Stainless Steel or Zinc

One-piece SolidGround® design feature mitigates the concern of moisture penetration in a horizontal condition. Provides a reveal and plaster stop at parapet top and function as a depth screed. Can be used at ceiling to wall conditions when dealing with dissimilar materials.



### TSF: Transition Step Flashing

- Available Curved Upon Request
  - Available in Aluminum, Copper, Galvanized Steel, Bonderized, Galvalume®, Stainless Steel or Zinc
- A step flashing that provides a drip edge for top of windows and door conditions or where special flashing conditions are present.