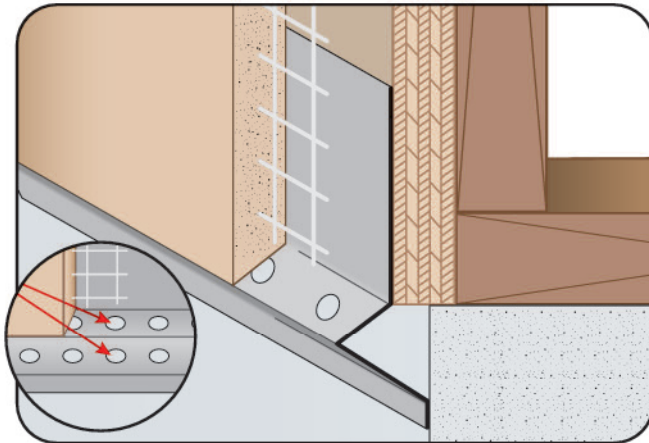




**CUSTOM SIZES AVAILABLE!**

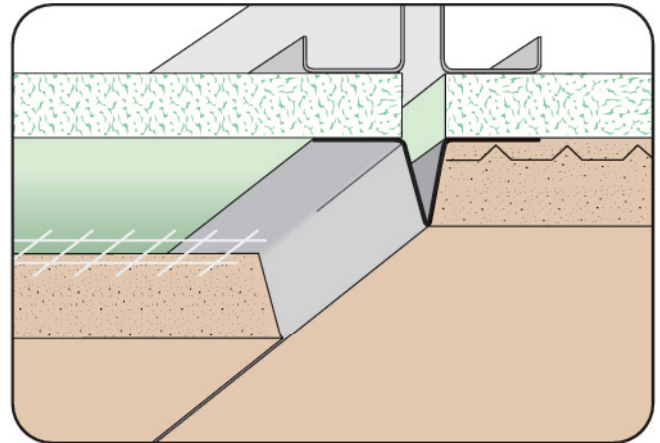
Stockton Custom Fabrication  
877-786-2587  
custom@StocktonProducts.com



### OWS: Offset Weep Screenshot

- Superior™ Moisture Protection
- Available With 1/2" Weep Holes or No Weep Holes
- Available Curved Upon Request
- Available in Aluminum, Copper, Galvanized Steel, Bonderized, Galvalume®, Stainless Steel or Zinc

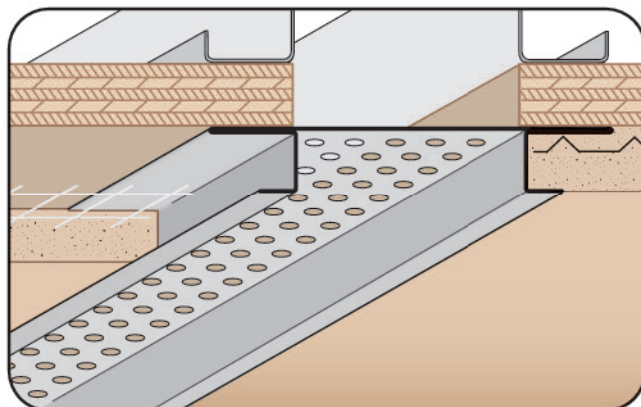
A special weep screed for those conditions where the sheer wall exceeds the foundation in plane. This special design permits the bottom leg of the weep screed to return back to the foundation



### PBS: Pointed Base Screenshot

- Available With 1/2" Key Holes or No Holes
- Available in Aluminum, Copper, Galvanized Steel, Bonderized, Galvalume®, Stainless Steel or Zinc

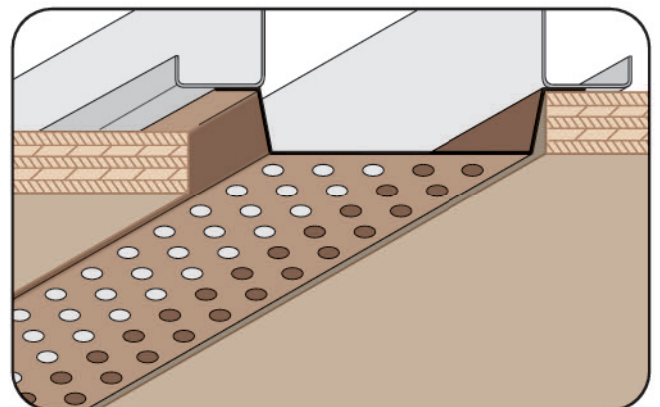
The pointed base screed functions as a control joint and depth screed in the plaster. The base screed comes with or without 1/2" key holes in the flange for a mechanical key.



### PCS: Plaster Channel Screenshot

- Available With 1/8", 1/4" Vent Holes or No Vent
- Available Curved Upon Request
- Available in Aluminum, Copper, Galvanized Steel, Bonderized, Galvalume®, Stainless Steel or Zinc

Channel screed style reveal that provides decorative shadow lines and accent stripes in an exterior finish. Has return keys for screeding of stucco. Can also be ordered vented for a perimeter air flow application.



### PSV: Plywood Style Vent

- Available With 1/8", 1/4" Vent Holes or No Holes
- Available Pre-Painted Brown, White or Unpainted
- Galvanized Steel Only

Specialty soffit vent for use with plywood soffit conditions.

