

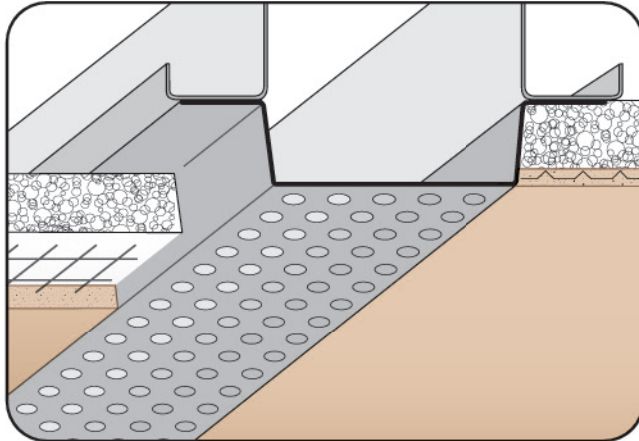


**CUSTOM SIZES AVAILABLE!**

Stockton Custom Fabrication  
877-786-2587  
custom@StocktonProducts.com

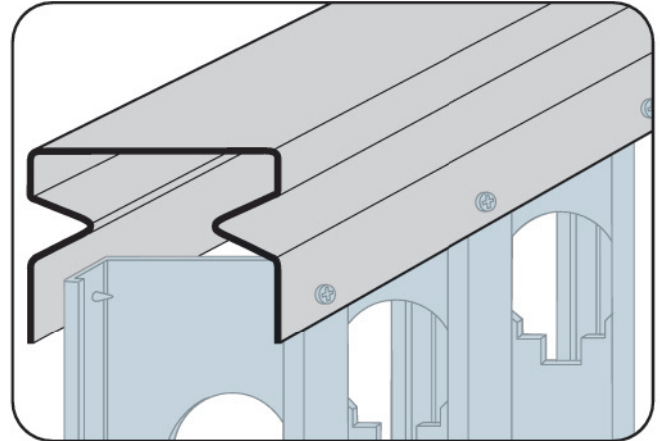


**PRODUCTS™**



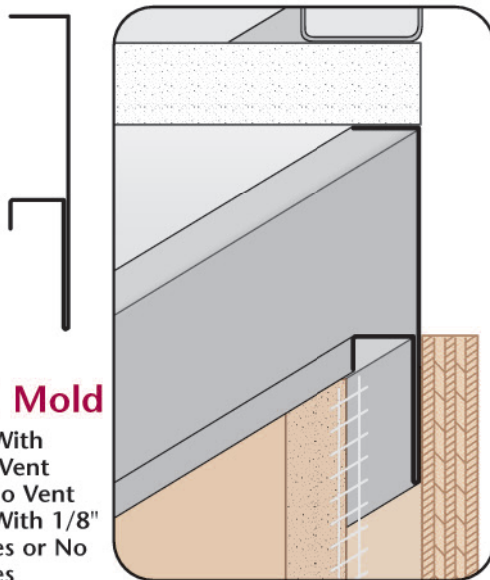
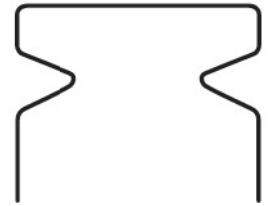
### FEV: Flush Edge Vent

- Available With 1/8", 1/4" Vent Holes or No Vent
  - Available Curved Upon Request
  - Available in Aluminum, Copper, Galvanized Steel, Bonderized, Galvalume®, Stainless Steel or Zinc
- A soffit vent that provides a "Flush" reveal look.



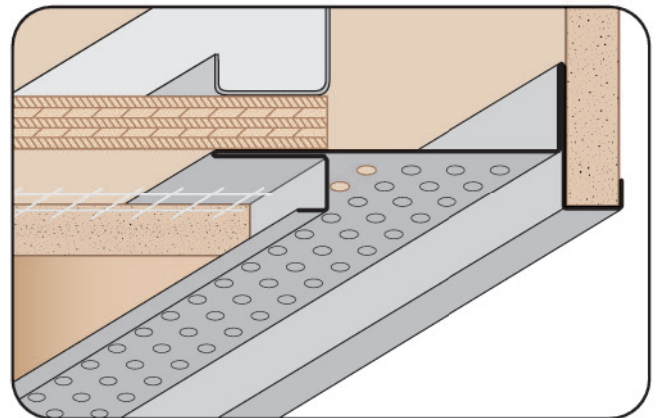
### FLT: Flexible Trak

- 26 Gauge or 20 Gauge Galvanized Steel Only
- Flex Trak is designed specifically for use with non-load bearing partition walls to help reduce cracking caused by deflection. It is available in 20 gauge, G-90 galvanized steel in 3 5/8", 4" and 6" widths. Larger widths are available.



### FRM: F Reveal Mold

- Available With 1/8", 1/4" Vent Holes or No Vent
  - Available With 1/8" Weep Holes or No Weep Holes
  - Available Curved Upon Request
  - Available in Aluminum, Copper, Galvanized Steel, Bonderized, Galvalume®, Stainless Steel or Zinc
- Creates a decorative reveal at wall/ceiling conditions for stucco. Can be vented for perimeter air flow. Has a return key for screeding.



### FSM: Fascia Soffit Mold

- Available With 1/8", 1/4" Vent Holes or No Vent
  - Available With 1/8" Weep Holes or No Weep Holes
  - Available Curved Upon Request
  - Available in Aluminum, Copper, Galvanized Steel, Bonderized, Galvalume®, Stainless Steel or Zinc
- Creates a decorative reveal at fascia/soffit transition providing a small overhang drip edge. Has return keys for screeding of stucco. Extended attachment flanges provides area to overlay lathing. Can be vented for perimeter airflow into space above.