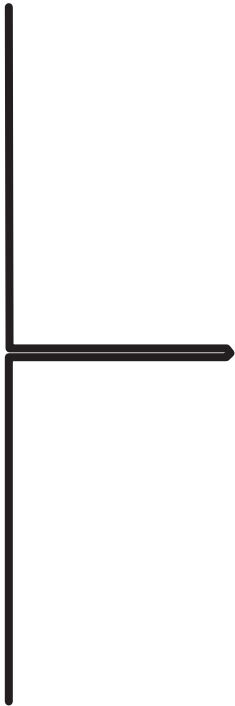
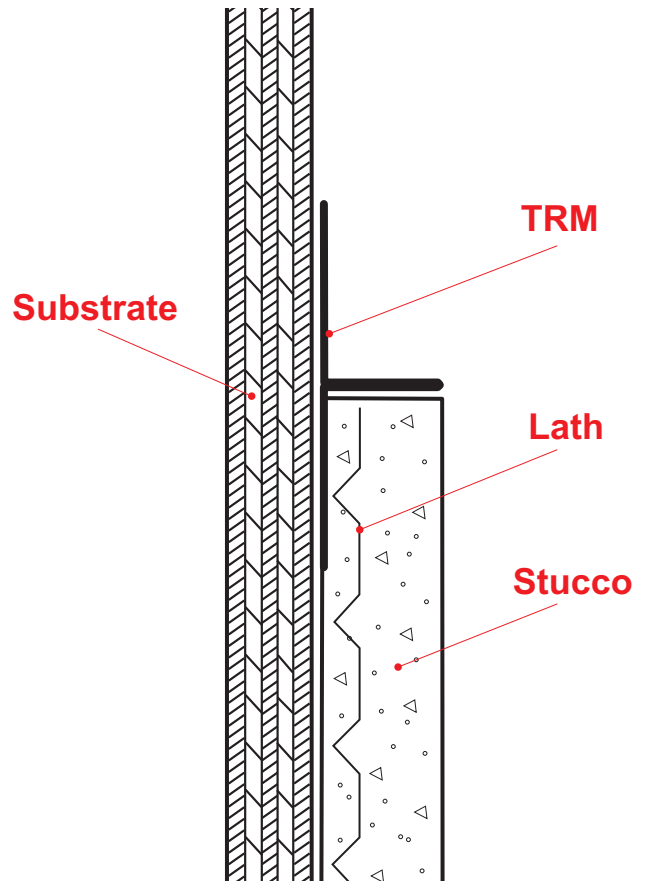


TRM: T-Reveal Mold



One-piece SolidGround® design feature mitigates the concern of moisture penetration in a horizontal condition. Provides a reveal and plaster stop at parapet top and function as a depth screed. Can be used at ceiling to wall conditions when dealing with dissimilar materials.

Note: This drawing is supplied solely to assist in the selection and application of product manufactured by Stockton Products. This drawing is generic in nature and should not be used in design or construction without an independent evaluation by a qualified Architect or Engineer of Record.

©2021 Stockton Products. All rights reserved worldwide. Product illustrations are for reference only. Rev 113021
CALIFORNIA RESIDENTS: Please review our Prop 65 statement at stpro.us/P65 or visit www.P65Warnings.ca.gov