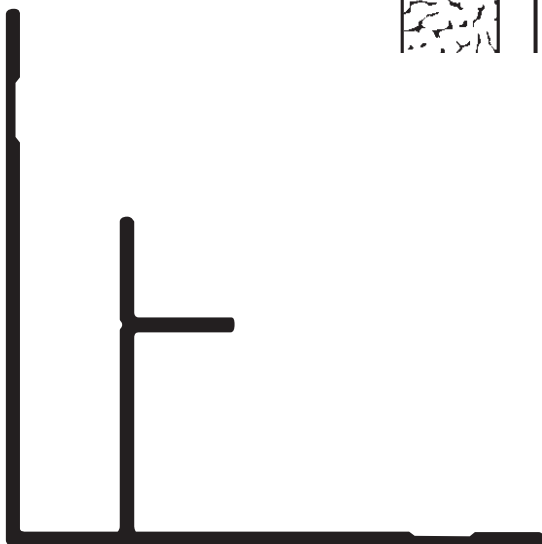
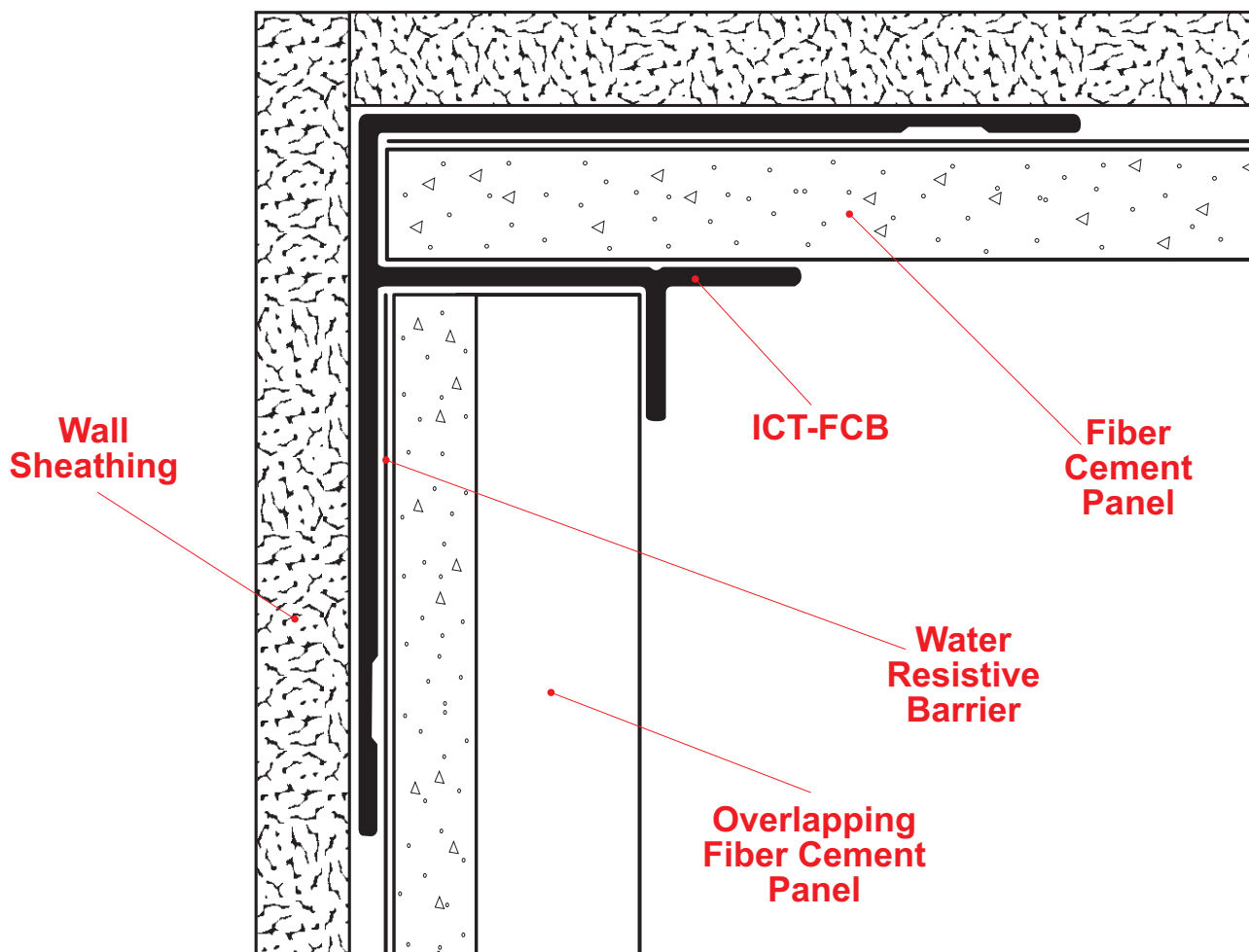




ICT-FCP: Inside Corner Transition for Fiber Cement Panel



The ICT-FCP Inside Corner Transition creates an inside corner reveal when transitioning from a single fiber cement panel to two layers of overlapping siding.

Note: This drawing is supplied solely to assist in the selection and application of product manufactured by Stockton Products. This drawing is generic in nature and should not be used in design or construction without an independent evaluation by a qualified Architect or Engineer of Record.

©2023 Stockton Products. All rights reserved worldwide. Product illustrations are for reference only. Rev 100123

CALIFORNIA RESIDENTS: Please review our Prop 65 statement at stpro.us/P65 or visit www.P65Warnings.ca.gov