

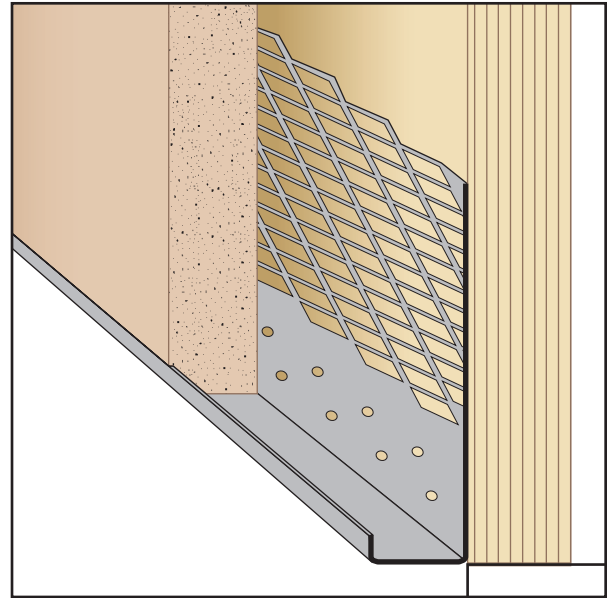


1-87-STOCKTON
 FAX: (702) 651-0948
 office@stocktonproducts.com
 FaceBook.com/stocktonproducts
 www.StocktonProducts.com

ZEFCB: #66 Zinc Expanded Flange Casing Bead

- Available With 1/2" and 7/8" Ground Depth
 - Made of Zinc (25 Gauge Thickness)
- A pure zinc expanded flange casing bead with a 3" attachment leg for harsh environments where maximum anti-corrosive protection is desired. Available with 1/2" and 7/8" ground depths for a variety of installation options. Available with weep holes by special order.

Note: Additional ground depths available on special order. Please call customer service for details.



KEY

- PLASTER/STUCCO
- CONCRETE
- PLYWOOD
- WOOD
- FOAM
- WATERPROOF BARRIER
- WALL SHEATHING
- DRYWALL
- DRYWALL MUD
- FIBER CEMENT

Length	X Size
10'	1/2"
	7/8"

Size And Packaging

Ground	Length	Pieces Per Carton	Wgt. Per Carton	Feet Per Carton
1/2"	10'	30	51 lbs.	300
7/8"	10'	30	54 lbs.	300

*Sold by the carton only.

Materials:

- 25ga. 99.9% Pure Zinc

Note: Standard length is 10 feet.

ASTM Codes:

- B29 (Zinc)
- B69 (Zinc)

