

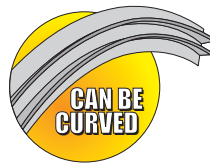
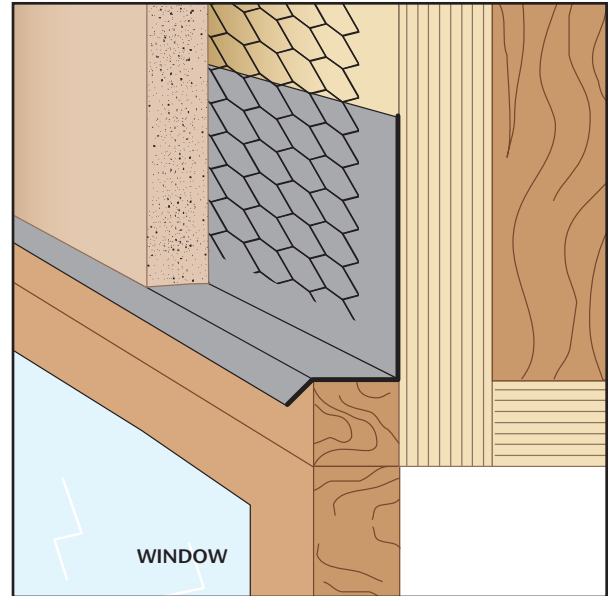


**1-87-STOCKTON**  
 FAX: (702) 651-0948  
 office@stocktonproducts.com  
 FaceBook.com/stocktonproducts  
 www.StocktonProducts.com

# WTP: Window Termination Point

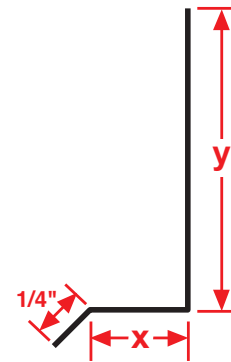
- Available in Copper, Galvanized Steel, Zinc, Stainless Steel or Aluminum

Provides a termination/drip edge above exterior door and window heads.



KEY	
	PLASTER/STUCCO
	CONCRETE
	PLYWOOD
	WOOD
	FOAM
	WATERPROOF BARRIER
	WALL SHEATHING
	DRYWALL
	DRYWALL MUD
	FIBER CEMENT

Length	X Size	Y Size
10'	1/2"	2"
	5/8"	2 1/2"
	3/4"	3"
	7/8"	4"
	1"	
	1 3/8"	



## Materials:

- Copper (16oz. (24-266A))
- Galvanized Steel (26-gauge G90)
- Zinc (.020 #190 Pure Zinc Alloy)
- Stainless Steel (304#2 & 304#4)
- Aluminum (5052)

**Note:** Standard length is 10 feet.  
 Additional lengths available upon request.

## ASTM Codes:

- A580M (Stainless Steel)
- A653/A653M (Galvanized Coating)
- A924 (Galvanized Coating)
- B152/B152M (Copper)
- B209 (Aluminum Sheet)
- B221-14 (Aluminum)
- B69 (Zinc)
- C1047 (Drywall)
- C1063 (Accessories)
- C841 (Interior Furring and Lathing)

©2016 Stockton Products. All rights reserved worldwide. CornerAid®, WeepAid®, Pozalite®, ArchAid®, StockAid®, EmberStop®, BugStop®, SolidGround®, Tru-Corner® and Superior Moisture Protection™ are all trademarks of Stockton Products™.

