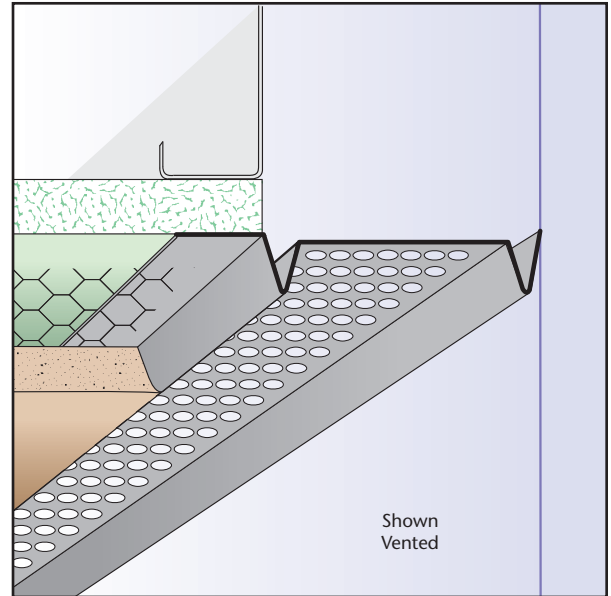


# SFS: Single Flange Screed

- Available With 1/8", 1/4" Vent Holes or No Vent
- Available in Copper, Galvanized Steel, Zinc, Stainless Steel or Aluminum

Same as our standard vent, less one flange, designed to butt against walls on one side while providing a plaster stop on the other. Can be used in ceiling/wall or base conditions providing perimeter airflow. Available non-vented for use as a decorative reveal upon request.



Length	X Size	Y Size
10'	3/8"	3/4"
	1/2"	1"
	5/8"	1 1/2"
	3/4"	2"
	7/8"	2 1/2"
	1"	3"
	1 3/8"	3 1/2"
		4"
		4 1/2"
		5"
		5 1/2"
		6"

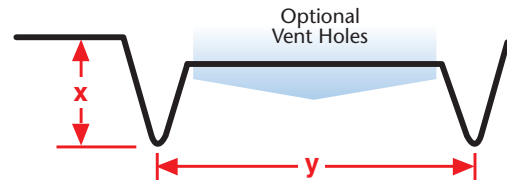
**KEY**

- PLASTER/STUCCO
- CONCRETE
- PLYWOOD
- WOOD
- FOAM
- WATERPROOF BARRIER
- WALL SHEATHING
- DRYWALL
- DRYWALL MUD
- FIBER CEMENT

### Materials:

- Copper (16oz. (24-266A))
- Galvanized Steel (26-gauge G90)
- Zinc (.020 #190 Pure Zinc Alloy)
- Stainless Steel (304#2 & 304#4)
- Aluminum (5052)

**Note:** Standard length is 10 feet.  
 Additional lengths available upon request.



### ASTM Codes:

- A580M (Stainless Steel)
- A653/A653M (Galvanized Coating)
- A924 (Galvanized Coating)
- B152/B152M (Copper)
- B209 (Aluminum Sheet)
- B221-14 (Aluminum)
- B69 (Zinc)
- C1047 (Drywall)
- C1063 (Accessories)
- C841 (Interior Furring and Lathing)

