



PRODUCTS™

1-87-STOCKTON

FAX: (702) 651-0948

office@stocktonproducts.com

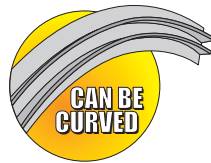
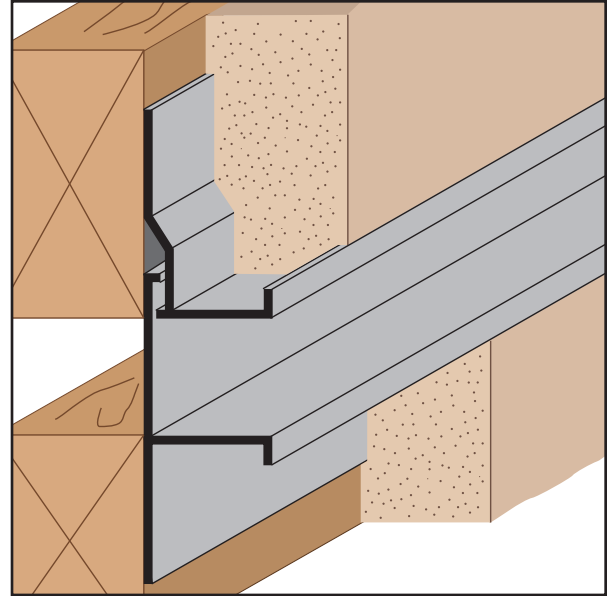
Facebook.com/stocktonproducts

www.StocktonProducts.com

PCS 75-2: Plaster Channel Screed 75-2 Piece

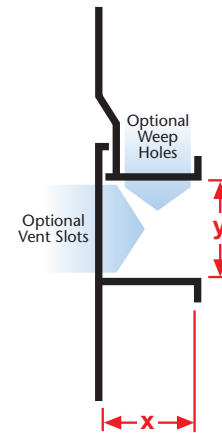
- Available With 1/8" x 1" Vent Slots or No Vents

A two-piece version of the PCS series molding that provides 1/4" +/- movement where a "true" expansion joint is required. In a double stud condition, this molding is typically used in a horizontal condition at floor lines where deflection is an issue. 1/8" weep holes available.



| KEY | |
|-----|--------------------|
| | PLASTER/STUCCO |
| | CONCRETE |
| | PLYWOOD |
| | WOOD |
| | FOAM |
| | WATERPROOF BARRIER |
| | WALL SHEATHING |
| | DRYWALL |
| | DRYWALL MUD |
| | FIBER CEMENT |

| Length | X Size | Y Size |
|--------|--------|--------|
| 10' | 1/2" | 1/4" |
| | 3/4" | 1/2" |
| | | 3/4" |
| | | 1" |
| | | 2" |



Materials:

- Aluminum Alloy (6063 T-5)

Note: Standard length is 10 feet. Additional lengths available upon request.

ASTM Codes:

- B136 (Anodize Coating)
- B244 (Anodize Coating)
- C1063 (Accessories)
- D4214 (Paint Films)
- B221-14 (Aluminum)

