

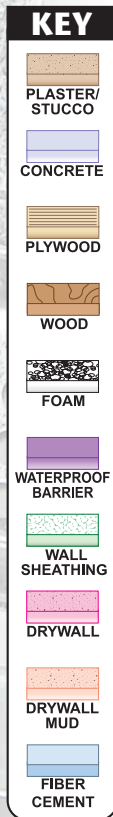
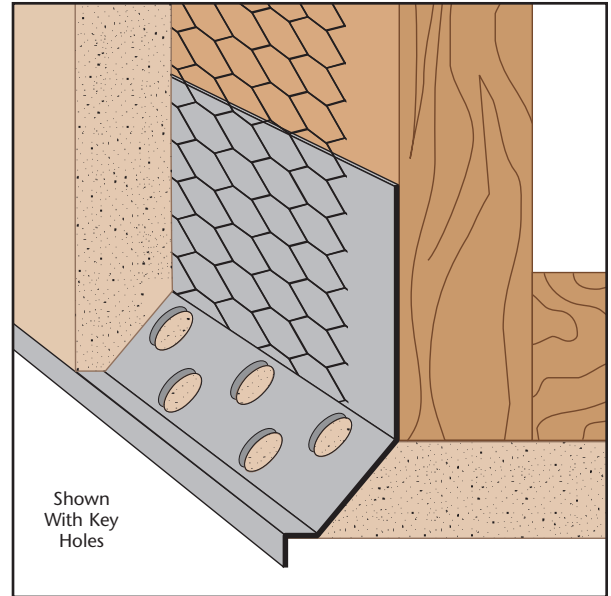


## NFD: #5 Drip

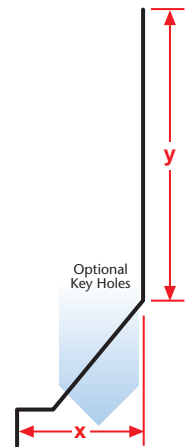
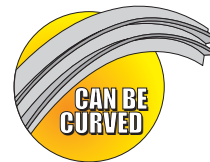
- Superior™ Moisture Protection
- Available With 1/2" Key Holes or No Holes
- Available in Copper, Galvanized Steel, Zinc, Stainless Steel or Aluminum

A drip screed that helps align the soffit to give it a clean, straight edge at the fascia/soffit line. 1/2" holes help "key" plaster to the molding. Matching factory miter-cut, solid-soldered inside and outside corners are available, giving you moisture management confidence throughout the entire installation.

**Note:** Factory curving this item is limited. Please consult the factory for information.



Length	X Size	Y Size
10'	3/4"	2"
	7/8"	3 1/2"
	1 3/8"	4"



### Materials:

- Copper (16oz. (24-266A))
- Galvanized Steel (26-gauge G90)
- Zinc (.020 #190 Pure Zinc Alloy)
- Stainless Steel (304#2 & 304#4)
- Aluminum (5052)

**Note:** Standard length is 10 feet.  
 Additional lengths available upon request.

### ASTM Codes:

- A580M (Stainless Steel)
- A653/A653M (Galvanized Coating)
- A924 (Galvanized Coating)
- B152/B152M (Copper)
- B209 (Aluminum Sheet)
- B221-14 (Aluminum)
- B69 (Zinc)
- C1047 (Drywall)
- C1063 (Accessories)
- C841 (Interior Furring and Lathing)

