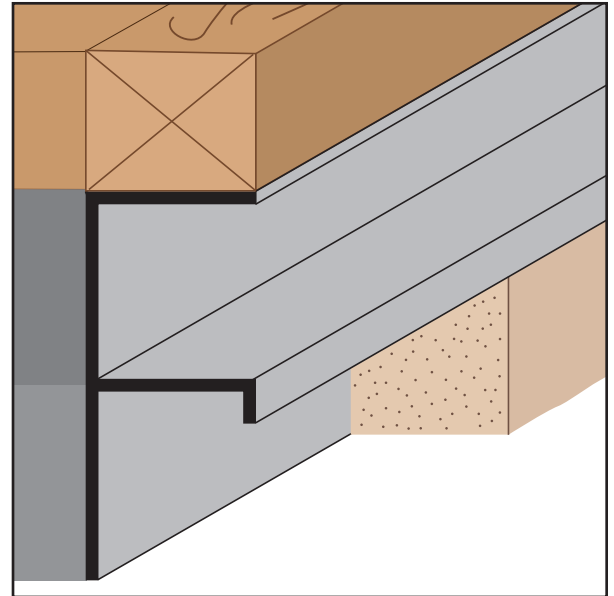
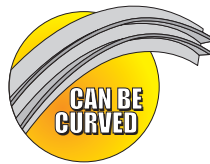


FPM: F Plaster Molding

- Available With 1/8" x 1" Vent Slots or No Vents

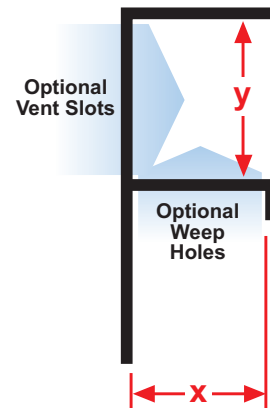
A plaster stop/control screed for conventional 3-coat stucco, used at the top or base of columns, the top of walls at the ceiling, or at the base to create a reveal. Also used at the top of windows to permit the continuation of a horizontal reveal at the window line. Available with 1/8" weep holes.

Note: *1 3/8" X Size available in 3/4" Y Size only.



KEY	
	PLASTER/STUCCO
	CONCRETE
	PLYWOOD
	WOOD
	FOAM
	WATERPROOF BARRIER
	WALL SHEATHING
	DRYWALL
	DRYWALL MUD
	FIBER CEMENT

Length	X Size	Y Size
10'	3/4"	1/2"
	*1 3/8"	3/4"
		1"
		1 1/2"
		2"
		2 1/2"
		3"
		4"



Materials:

- Aluminum Alloy (6063 T-5)

Note: Standard length is 10 feet. Additional lengths available upon request.

ASTM Codes:

- B136 (Anodize Coating)
- B244 (Anodize Coating)
- C1063 (Accessories)
- D4214 (Paint Films)
- B221-14 (Aluminum)

