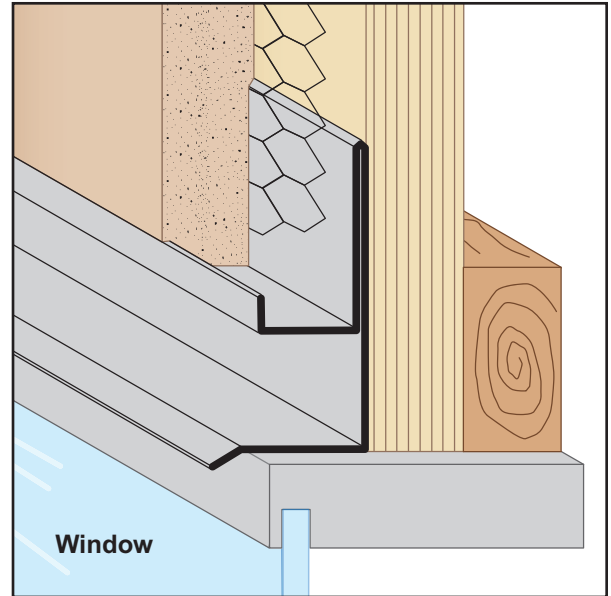




FDM: F-Drip Mold

- Available With 1/8" Weep Holes or No Holes
- Available in Copper, Galvanized Steel, Zinc, Stainless Steel or Aluminum

Provides a plaster stop/drip molding with an aesthetic reveal for window heads, top of doors frames and plate conditions where a drip function is desired.



KEY

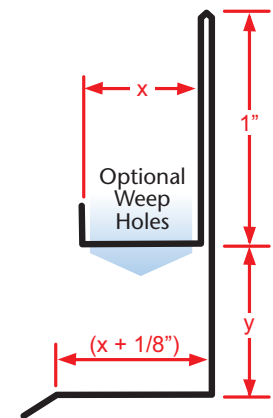
- PLASTER/STUCCO
- CONCRETE
- PLYWOOD
- WOOD
- FOAM
- WATERPROOF BARRIER
- WALL SHEATHING
- DRYWALL
- DRYWALL MUD
- FIBER CEMENT

Length	X Size	Y Size
10'	1/2"	1/2"
	3/4"	3/4"
	7/8"	1"
	1"	
	1 3/8"	

Materials:

- Copper (16oz. (24-266A))
- Galvanized Steel (26-gauge G90)
- Zinc (.020 #190 Pure Zinc Alloy)
- Stainless Steel (304#2 & 304#4)
- Aluminum (5052)

Note: Standard length is 10 feet.
 Additional lengths available upon request.



ASTM Codes:

- A580M (Stainless Steel)
- A653/A653M (Galvanized Coating)
- A924 (Galvanized Coating)
- B152/B152M (Copper)
- B209 (Aluminum Sheet)
- B221-14 (Aluminum)
- B69 (Zinc)
- C1047 (Drywall)
- C1063 (Accessories)
- C841 (Interior Furring and Lathing)

