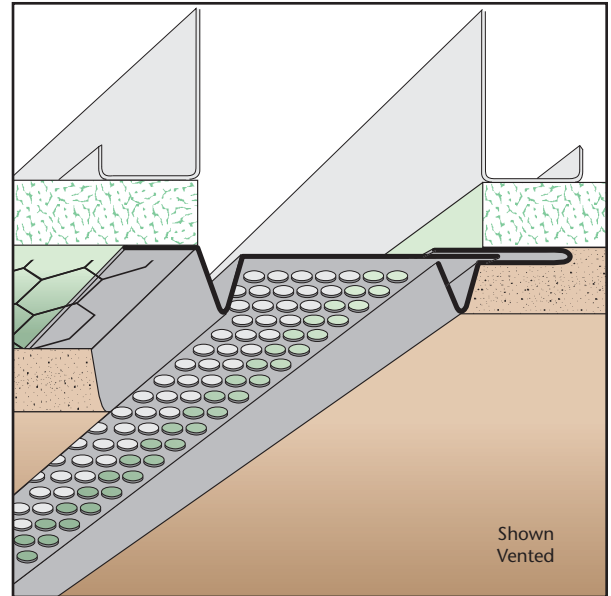


EVS: Expansion Vent Screed - 2 pc.

- Available With 1/8", 1/4" Vent Holes or No Holes
- Available in Copper, Galvanized Steel, Zinc, Stainless Steel or Aluminum

Adjustable version of our standard vent screed that permits movement in a double stud condition while providing required airflow into space above. Can also be ordered non-vented for use as a horizontal expansion joint providing movement capabilities at a floor line.

Note: Aluminum is not available with 1/8" vent holes.



Length	X Size	Y Size
10'	3/8"	3/4"
	1/2"	1"
	3/4"	1 1/2"
	7/8"	2"
	1"	2 1/2"
	1 3/8"	3"
		3 1/2"
		4"
		4 1/2"
		5"
		5 1/2"
		6"

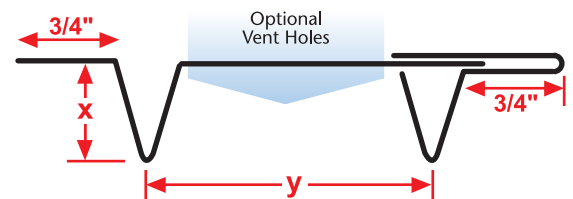
KEY

- PLASTER/STUCCO
- CONCRETE
- PLYWOOD
- WOOD
- FOAM
- WATERPROOF BARRIER
- WALL SHEATHING
- DRYWALL
- DRYWALL MUD
- FIBER CEMENT

Materials:

- Copper (16oz. (24-266A))
- Galvanized Steel (26-gauge G90)
- Zinc (.020 #190 Pure Zinc Alloy)
- Stainless Steel (304#2 & 304#4)
- Aluminum (5052)

Note: Standard length is 10 feet.
 Additional lengths available upon request.



ASTM Codes:

- A580M (Stainless Steel)
- A653/A653M (Galvanized Coating)
- A924 (Galvanized Coating)
- B152/B152M (Copper)
- B209 (Aluminum Sheet)
- B221-14 (Aluminum)
- B69 (Zinc)
- C1047 (Drywall)
- C1063 (Accessories)
- C841 (Interior Furring and Lathing)

