

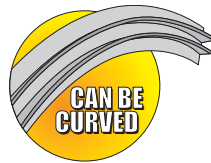
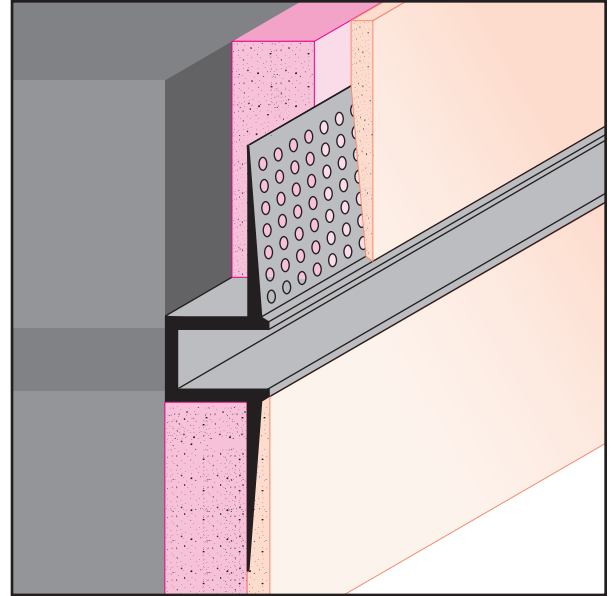


DRM: Wall Reveal

- Available With 1/8" x 1" Vent Slots or No Vents

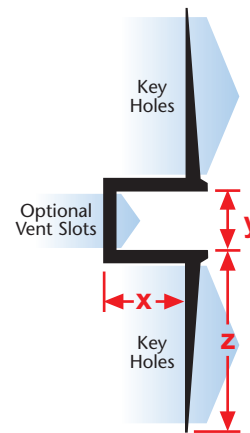
A reveal molding with taping flanges that provides a decorative reveal in drywall. This molding is installed after the drywall board, greatly improving installation ease and time. Includes key holes for proper plaster adhesion.

Note: Not all X Sizes (Depth) or Y Sizes (Reveal) combinations are available. Please consult with customer service.



KEY	
	PLASTER/STUCCO
	CONCRETE
	PLYWOOD
	WOOD
	FOAM
	WATERPROOF BARRIER
	WALL SHEATHING
	DRYWALL
	DRYWALL MUD
	FIBER CEMENT

Length	X Size	Y Size	Z Size
10'	1/4"	1/8"	7/8"
	1/2"	1/4"	
	5/8"	3/8"	
		1/2"	
		5/8"	
		3/4"	
		1"	
		1 1/2"	
		2"	
		3"	



Materials:

- Aluminum Alloy (6063 T-5)

Note: Standard length is 10 feet. Additional lengths available upon request.

ASTM Codes:

- B136 (Anodize Coating)
- B244 (Anodize Coating)
- C1063 (Accessories)
- D4214 (Paint Films)
- B221-14 (Aluminum)

