

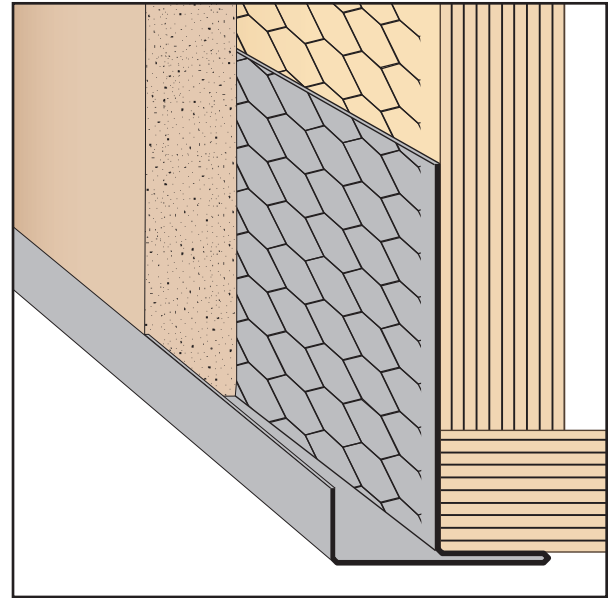


1-87-STOCKTON
 FAX: (702) 651-0948
 office@stocktonproducts.com
 FaceBook.com/stocktonproducts
 www.StocktonProducts.com

CTM: Corner Transition Mold

- Available With 1/8", 1/2" Weep Holes or No Holes
- Available in Copper, Galvanized Steel, Zinc, Stainless Steel or Aluminum

A plaster stop used in various applications to finish an edge or bridge when using dissimilar materials. Can be used to support acoustical tile or to case off windows.



KEY

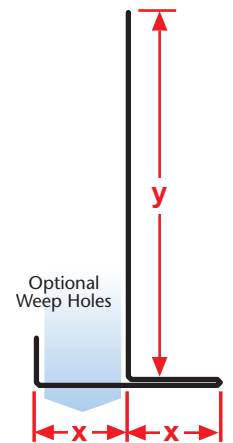
- PLASTER/STUCCO
- CONCRETE
- PLYWOOD
- WOOD
- FOAM
- WATERPROOF BARRIER
- WALL SHEATHING
- DRYWALL
- DRYWALL MUD
- FIBER CEMENT

Length	X Size	Y Size
10'	1/2"	1"
	5/8"	2"
	3/4"	3"
	7/8"	1"
	1 3/8"	

Materials:

- Copper (16oz. (24-266A))
- Galvanized Steel (26-gauge G90)
- Zinc (.020 #190 Pure Zinc Alloy)
- Stainless Steel (304#2 & 304#4)
- Aluminum (5052)

Note: Standard length is 10 feet.
 Additional lengths available upon request.



ASTM Codes:

- A580M (Stainless Steel)
- A653/A653M (Galvanized Coating)
- A924 (Galvanized Coating)
- B152/B152M (Copper)
- B209 (Aluminum Sheet)
- B221-14 (Aluminum)
- B69 (Zinc)
- C1047 (Drywall)
- C1063 (Accessories)
- C841 (Interior Furring and Lathing)

©2016 Stockton Products. All rights reserved worldwide. CornerAid®, WeepAid®, Pozalite®, ArchAid®, StockAid®, EmberStop®, BugStop®, SolidGround®, Tru-Corner® and Superior Moisture Protection™ are all trademarks of Stockton Products™.

