



PRODUCTS™

1-87-STOCKTON

FAX: (702) 651-0948

office@stocktonproducts.com

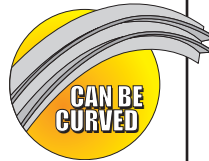
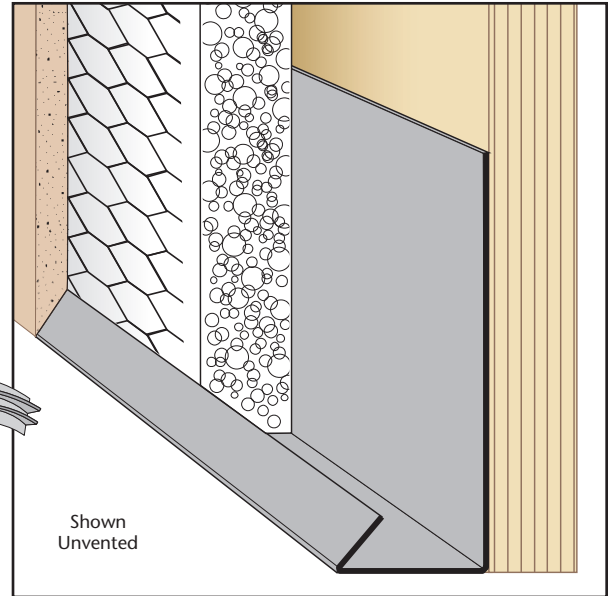
Facebook.com/stocktonproducts

www.StocktonProducts.com

CSB: Casing Starter Bead

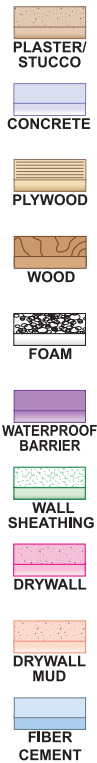
- Superior™ Moisture Protection
- Available With 1/8", 1/2" Weep Holes or No Holes
- Available in Copper, Galvanized Steel, Zinc, Stainless Steel or Aluminum

A stop used as a starting track for EIFS systems. Matching factory miter-cut, solid-soldered inside and outside corners are available, giving you moisture management confidence throughout the entire installation.



Length	X Size	Y Size
10'	3/8"	1 1/2"
	1/2"	2"
	5/8"	3 1/2"
	3/4"	
	7/8"	
	1"	
	1 1/8"	
	1 1/4"	
	1 3/8"	
	1 1/2"	
	1 5/8"	
1 3/4"		
2"		
2 1/2"		

KEY



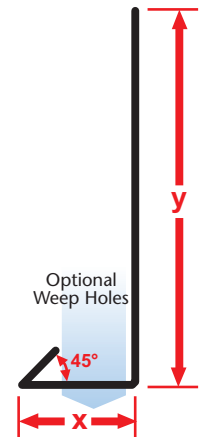
Materials:

- Copper (16oz. (24-266A))
- Galvanized Steel (26-gauge G90)
- Zinc (.020 #190 Pure Zinc Alloy)
- Stainless Steel (304#2 & 304#4)
- Aluminum (5052)

Note: Standard length is 10 feet.
Additional lengths available upon request.

ASTM Codes:

- A580M (Stainless Steel)
- A653/A653M (Galvanized Coating)
- A924 (Galvanized Coating)
- B152/B152M (Copper)
- B209 (Aluminum Sheet)
- B221-14 (Aluminum)
- B69 (Zinc)
- C1047 (Drywall)
- C1063 (Accessories)
- C841 (Interior Furring and Lathing)



©2016 Stockton Products. All rights reserved worldwide. CornerAid®, WeepAid®, Pozalite®, ArchAid®, StockAid®, EmberStop®, BugStop®, SolidGround®, Tru-Corner® and Superior Moisture Protection™ are all trademarks of Stockton Products™.

