



PRODUCTS™

1-87-STOCKTON

FAX: (702) 651-0948

office@stocktonproducts.com

FaceBook.com/stocktonproducts

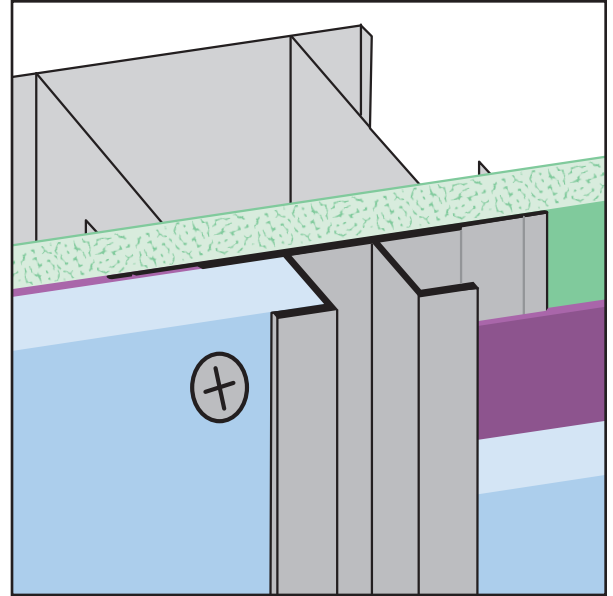
www.StocktonProducts.com

# CR-FCB: Channel Reveal for Fiber Cement Boards

• Available Vented or No Vents

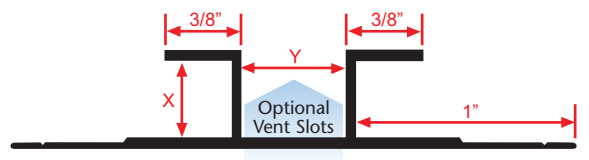
A decorative reveal used to create an aesthetically pleasing vertical accent between panels. Available vented for soffit venting requirements.

**Note:** Do not use in a horizontal condition.



KEY	
	PLASTER/STUCCO
	CONCRETE
	PLYWOOD
	WOOD
	FOAM
	WATERPROOF BARRIER
	WALL SHEATHING
	DRYWALL
	DRYWALL MUD
	FIBER CEMENT

Length	X Size	Y Size
10'	3/8"	1/2"



### Materials:

- Aluminum Alloy (6063 T-5)

**Note:** Standard length is 10 feet. Additional lengths available upon request.

### ASTM Codes:

- B136 (Anodize Coating)
- B244 (Anodize Coating)
- C1063 (Accessories)
- D4214 (Paint Films)
- B221-14 (Aluminum)

