



SPECIAL SIZES AVAILABLE!

Contact Stockton
Custom Fabrication
at (877) 786-2587

EXTRUDED

XDM: X Drywall Corner Molding

- Available Curved Upon Request
- Available in Aluminum Alloy (6063 T-5)

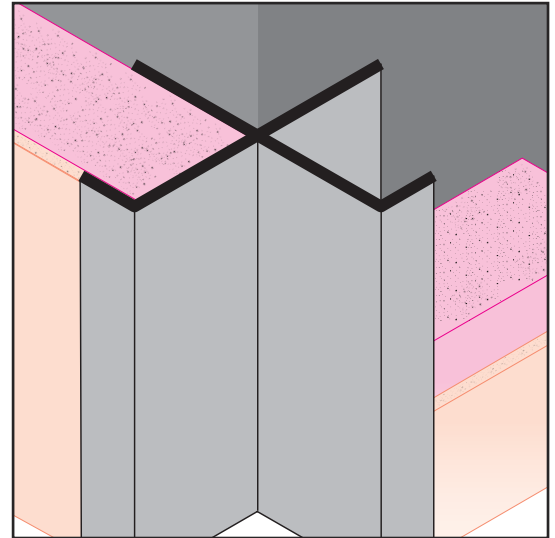
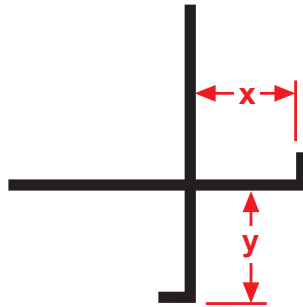
A drywall version of the "X" corner molding that creates a unique "inverse" corner look.

Most Common Sizes

X Sizes: 1/2" or 5/8"

Y Sizes: 1/2" or 5/8"

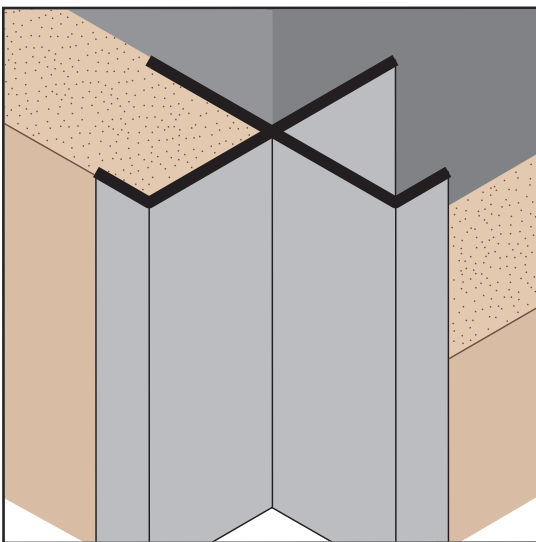
Length: 10'



Most Common Part Numbers:

XDM50 50E XDM: X=1/2, Y=1/2, Mill Finish, AL, 10'

XDM50 50EC XDM: X=1/2, Y=1/2, Clear Anodize, AL, 10'



XPM: X Plaster Molding

- Available Curved Upon Request
- Available in Aluminum Alloy (6063 T-5)

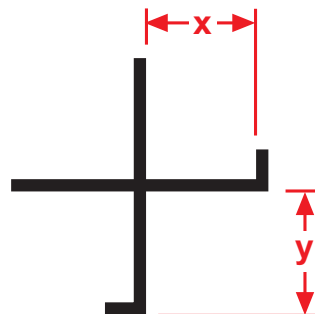
Creates a decorative inverted corner reveal detail for conventional 3-coat stucco at fascia/soffit conditions and around recessed entryways and doors. Can also be used to trim off the tops of pony walls and used as a drip edge on a fascia/soffit condition.

Most Common Sizes

X Sizes: 3/4"

Y Sizes: 3/4"

Length: 10'



Most Common Part Numbers:

XPM75 75EC XPM: X=3/4, Y=3/4, Clear Anodize, AL, 10'

XPM75 75EDB XPM: X=3/4, Y=3/4, Dark Bronze Anodize, AL, 10'