



**SPECIAL SIZES AVAILABLE!**

Contact Stockton Custom Fabrication at (877) 786-2587

# EXTRUDED

## SV: Soffit Vent

- Available With 1/8" x 1" Vent Slots or No Vents
- Available Curved Upon Request
- Available in Aluminum Alloy (6063 T-5)

For use with E.I.F.S. as a soffit vent.

**Note:** 1/2" X Size available in 2" Y Size only.

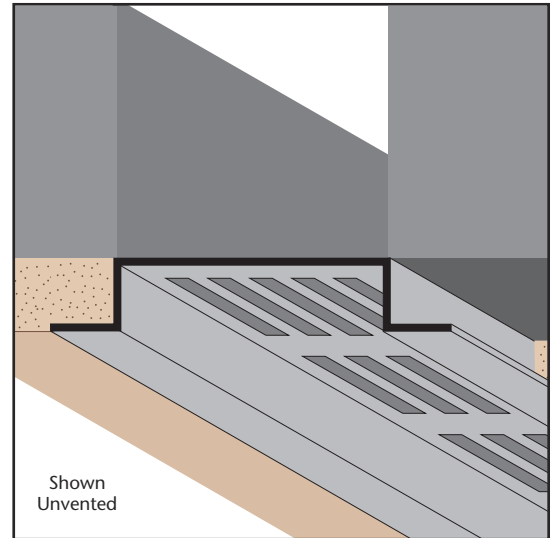
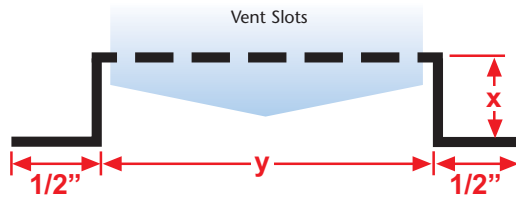
**Note:** Not all X Sizes (Depth) or Y Sizes (Reveal) combinations are available. Please consult with customer service.

### Most Common Sizes

**X Sizes:** 3/4" or 1/2"

**Y Sizes:** 2", 3" or 4"

**Length:** 10'



### Most Common Part Numbers:

**S V50V200EC** SV: X=1/2, Vent, Y=2, Clear Anodize, AL, 10'

**S V50V200ECR** SV: X=3/4, Vent, Y=2, Clear Anodize, AL, 10', Curved

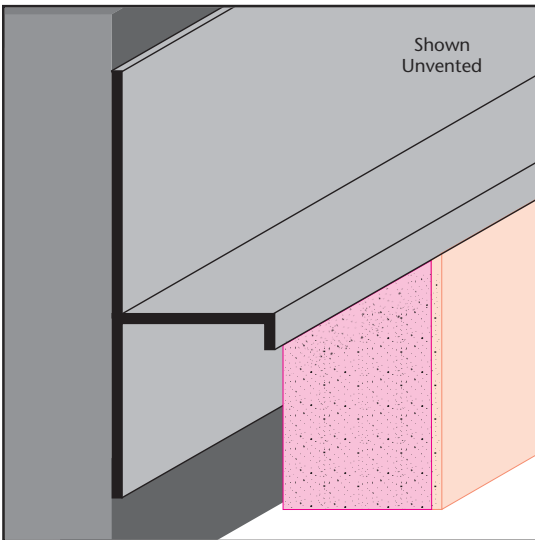
**S V75V200EC** SV: X=3/4, Vent, Y=2, Clear Anodize, AL, 10'

**S V75V200ES** SV: X=3/4, Vent, Y=2, Stripped Finish, AL, 10'

**S V75V300EC** SV: X=3/4, Vent, Y=3, Clear Anodize, AL, 10'

**S V75V300EDB** SV: X=3/4, Vent, Y=3, Dark Bronze, AL, 10'

**S V75V300EK** SV: X=3/4, Vent, Y=3, Fluorophore Paint, AL, 10'



## TDM: T Drywall Molding

- Available With 1/8" x 1" Vent Slots or No Vents
- Available Curved Upon Request
- Available in Aluminum Alloy (6063 T-5)

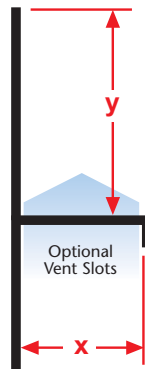
Provides a reveal and acts as a drywall stop/control screed for drywall at wall base and column base conditions where a reveal and stop are required. Can be used to create a reveal at ceiling/wall conditions.

### Most Common Sizes

**X Sizes:** 1/2" or 5/8"

**Y Sizes:** 1/2", 3/4", 1", 1 1/2", 2", 3" or 4"

**Length:** 10'



### Most Common Part Numbers:

**TDM50 100EC** TDM: X=1/2, Y=1, Clear Anodize, AL, 10'

**TDM50 50EC** TDM: X=1/2, Y=1/2, Clear Anodize, AL, 10'

**TDM50 50EC** TDM: X=1/2, Y=1/2, Clear Anodize, AL, 10'

**TDM50 75ES** TDM: X=1/2, Y=3/4, Stripped Finish, AL, 10'

**TDM625 1250EC** TDM: X=5/8, Y=1 1/4, Clear Anod, AL, 10'

**TDM625 50EC** TDM: X=5/8, Y=1/2, Clear Anodize, AL, 10'

**TDM625 75EC** TDM: X=5/8, Y=3/4, Clear Anodize, AL, 10'