



SPECIAL SIZES AVAILABLE!

Contact Stockton Custom Fabrication at (877) 786-2587

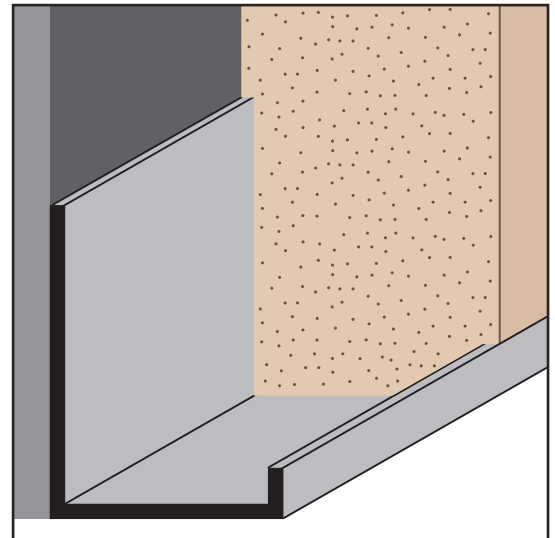
EXTRUDED

JPM: J Plaster Molding

- Available Curved Upon Request
- Available in Aluminum Alloy (6063 T-5)

A plaster stop/casing bead for conventional 3-coat stucco used in a variety of conditions that gives a nice finished look at all plaster terminations.

Note: *2" Y Size available on 1 1/2" and 1 3/8" X Size only.

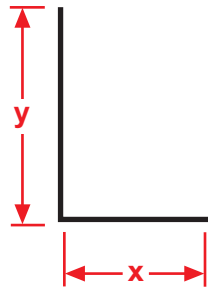


Most Common Sizes

X Sizes: 3/4", 1", 1 1/2" or 1 3/8"

Y Sizes: 1 1/8" or *2"

Length: 10'



Most Common Part Numbers:

JPM100EC JPM: X=1, Y=1 1/8, Clear Anodize, AL, 10'

JPM138EC JPM: X=1 3/8, Y=1 1/8, Clear Anodize, AL, 10'

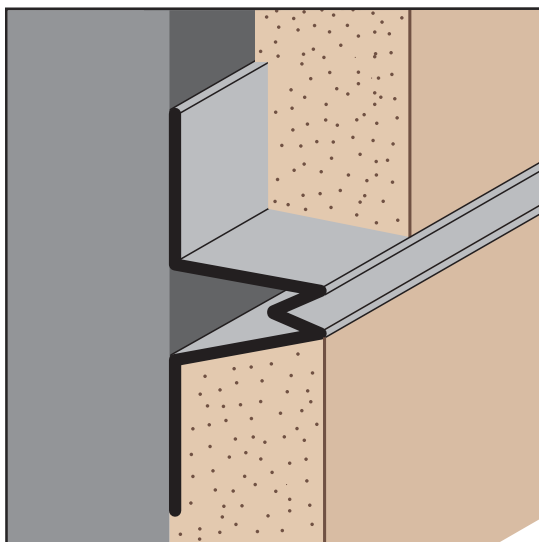
JPM150EC JPM: X=1 1/2, Y=1 1/8, Clear Anodize, AL, 10'

JPM75EC JPM: X=3/4, Y=1 1/8, Clear Anodize, AL, 10'

JPM75EC JPM: X=3/4, Y=1 1/8, Clear Anodize, AL, 10'

JPM75EK JPM: X=3/4, Y=1 1/8, Fluorophore Paint, AL, 10'

JPM75EK JPM: X=3/4, Y=1 1/8, Fluorophore Paint, AL, 10'



NVS: Narrow V Screed

- Available Curved Upon Request
- Available in Aluminum Alloy (6063 T-5)

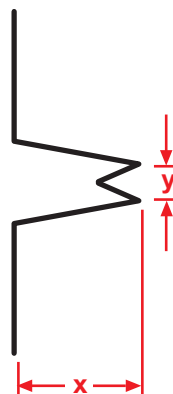
A narrow control screed that is both decorative and functional. A 1/8" wide control joint for conditions that require control joint with a minimal reveal.

Most Common Sizes

X Sizes: 1/2", 3/4" or 7/8"

Y Sizes: 1/8"

Length: 10'



Most Common Part Numbers:

NVS050 125EC NVS: X=1/2, Y=1/8, Clear Anodize, AL, 10'

NVS050 125EK NVS: X=3/4, Y=1/8, Fluorophore Paint, AL, 10'

NVS050 125ECH NVS: X=3/4, Y=1/8, Chem-Film, AL, 10'

NVS050 125EK NVS: X=7/8, Y=1/8, Fluorophore Paint, AL, 10'