

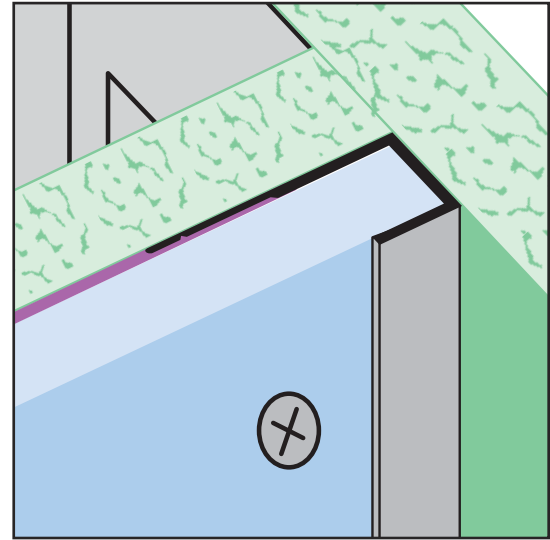
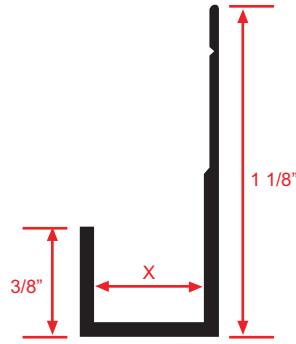
J MOLD-FCP: J Mold for Fiber Cement Panel

- Available in Aluminum Alloy (6063 T-5)
- Used as a termination molding to case off the fiber cement panel.

Most Common Sizes

X Sizes: 3/8"

Length: 10'



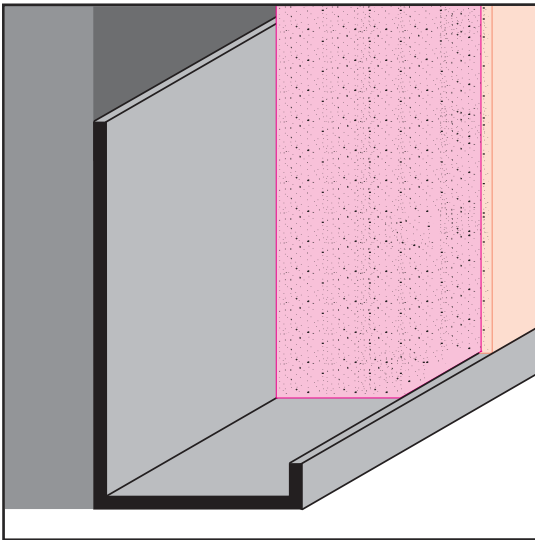
Most Common Part Numbers:

J MOLD FCP375EC J MOLD-FCP: X=3/8, Clear Anod, AL, 10'

J MOLD FCP375ECH J MOLD-FCP: X=3/8, Chem-Film, AL, 10'

J MOLD FCP375EK J MOLD-FCP: X=3/8, Fluorophore Paint, AL, 10'

J MOLD FCP375EP J MOLD-FCP: X=3/8, Powder Coated, AL, 10'



JDM: J Drywall Molding

- Available Curved Upon Request
- Available in Aluminum Alloy (6063 T-5)

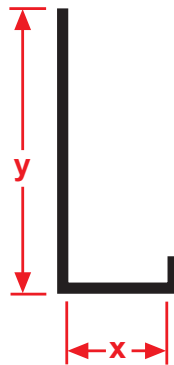
A drywall version of the "J" molding. Gives a nice finished look to drywall terminations.

Most Common Sizes

X Sizes: 1/2" or 5/8"

Y Sizes: 1 1/8"

Length: 10'



Most Common Part Numbers:

JDM50EC JDM: X=1/2, Y=1 1/8, Clear Anodize, AL, 10'

JDM50ECH JDM: X=1/2, Y=1 1/8, Clear Anodize, AL, 10'

JDM50EPC JDM: X=1/2, Y=1 1/8, Powder Coated, AL, 10'

JDM625E JDM: X=1/2, Y=1 1/8, Mill Finish, AL, 10'

JDM625E JDM: X=1/2, Y=1 1/8, Mill Finish, AL, 10'

JDM625EC JDM: X=5/8, Y=1 1/8, Clear Anodize, AL, 10'

JDM625EK JDM: X=5/8, Y=1 1/8, Clear Anodize, AL, 10'

JDM625ECH JDM: X=1/2, Y=1 1/8, Chem-Film, AL, 10'