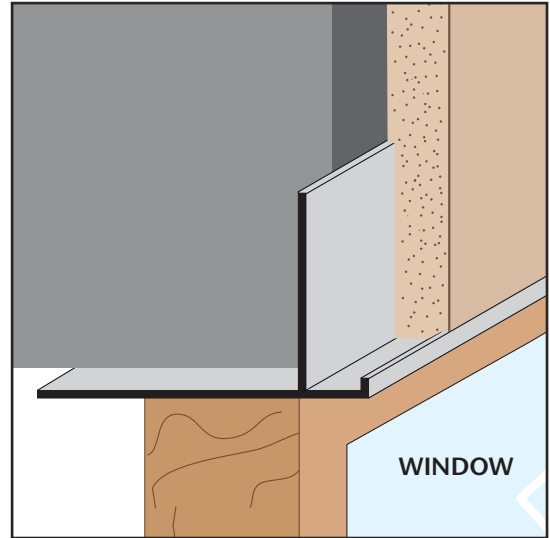


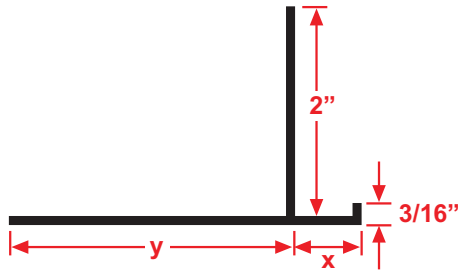
FRWM: Facia/Recessed Window Molding

- Available Curved Upon Request
- Available in Aluminum Alloy (6063 T-5)

A plaster stop for fascia/soffit corner conditions that provides a 3 1/8" reveal leg for recessed windows. Can be used when a caulking leg is required for backer rod and sealant.

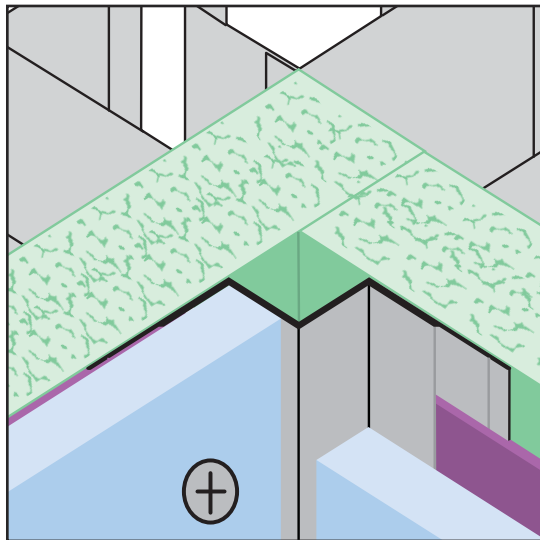


Most Common Sizes
X Sizes: 7/8" or 1 3/8"
Y Sizes: 3 1/8"
Length: 10'



Most Common Part Numbers:

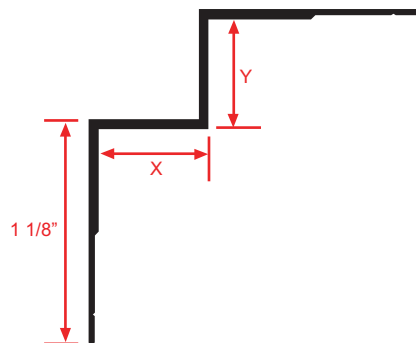
FRWM138 40012FTE	FRWM: X=1 3/8, Y=4, Mill Finish, AL, 12'
FRWM138 400EC	FRWM: X=1 3/8, Y=4, Clear Anod, AL, 10'
FRWM138 400EDB	FRWM: X=1 3/8, Y=4, Dark Bronze, AL, 10'
FRWM75 1625EK108IN	FRWM: X=1 3/8, Y=4, Fluorophore Paint, AL, 9'



IC-FCP: Inside Corner for Fiber Cement Panel

- Available in Aluminum Alloy (6063 T-5)
- Used in an inside corner condition where two Fiber Cement Panels meet.

Most Common Sizes
X Sizes: 1/2"
Y Sizes: 1/2"
Length: 10'



Most Common Part Numbers:

IC FCP50 50EC	IC-FCP: X=1/2, Y=1/2, Clear Anodize, AL, 10'
IC FCP50 50EK	IC-FCP: X=1/2, Y=1/2, Fluorophore Paint, AL, 10'
IC FCP50 50EP	IC-FCP: X=1/2, Y=1/2, Powder Coated, AL, 10'
IC FCP50 50ES	IC-FCP: X=1/2, Y=1/2, Stripped Finish, AL, 10'