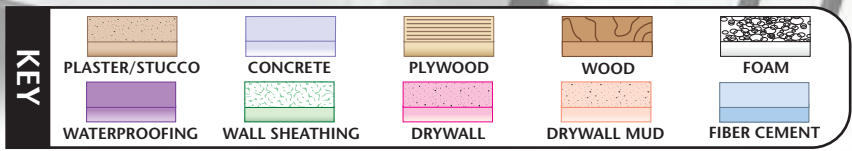


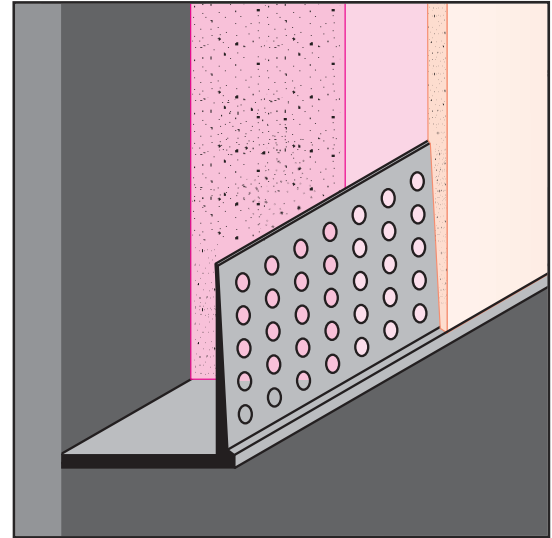
# EXTRUDED



## DRML: Edge Trim

- Available Curved Upon Request
- Available in Aluminum Alloy (6063 T-5)

"L" style drywall molding with a taping flange that provides a drywall termination point by capping of the raw edge of the drywall board. Includes key holes for drywall mud adhesion.

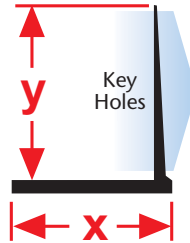


### Most Common Sizes

**X Sizes:** 1/2", 5/8", 3/4", 1", 1 1/2", 2" or 3"

**Y Sizes:** 7/8"

**Length:** 10'



### Most Common Part Numbers:

**DRML100EC** DRML: X=1, Clear Anodize, AL, 10'

**DRML100ECH** DRML: X=1, Chem-Film, AL, 10'

**DRML50EC** DRML: X=1/2, Clear Anodize, AL, 10'

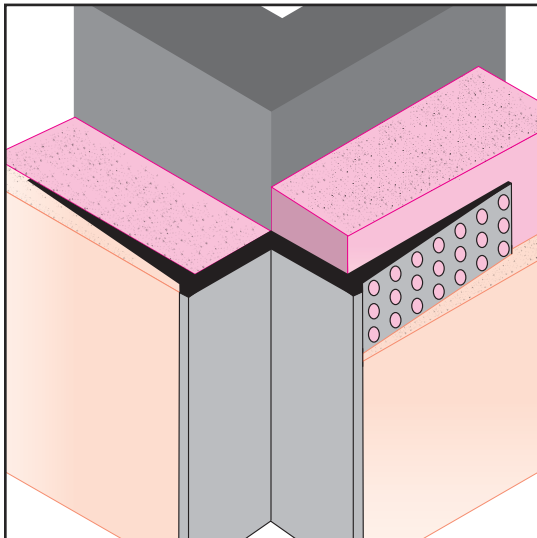
**DRML50ECH** DRML: X=1/2, Chem-Film, AL, 10'

**DRML625EC** DRML: X=5/8, Clear Anodize, AL, 10'

**DRML625ECH** DRML: X=5/8, Chem-Film, AL, 10'

**DRML75EC** DRML: X=3/4, Clear Anodize, AL, 10'

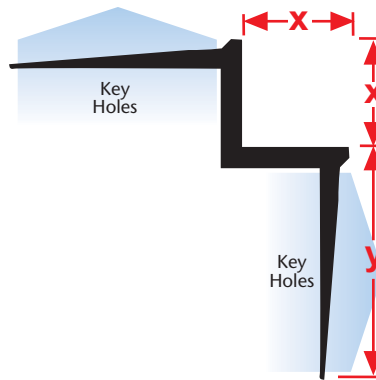
**DRML75ECH** DRML: X=3/4, Chem-Film, AL, 10'



## DRMW: W Corner Reveal

- Available Curved Upon Request
- Available in Aluminum Alloy (6063 T-5)

"W" style drywall molding with taping flanges that creates an inverted corner for setbacks, stepdowns and other special drywall conditions. Includes key holes for drywall mud adhesion.



### Most Common Sizes

**X Sizes:** 1/2" or 5/8"

**Y Sizes:** 7/8"

**Length:** 10"



### Most Common Part Numbers:

**DRMW625 625EC** DRWM: X=5/8, Y=5/8, Clear Anodize, AL, 10'

**DRMW625 625ECH** DRWM: X=5/8, Y=5/8, Chem-Film, AL, 10'