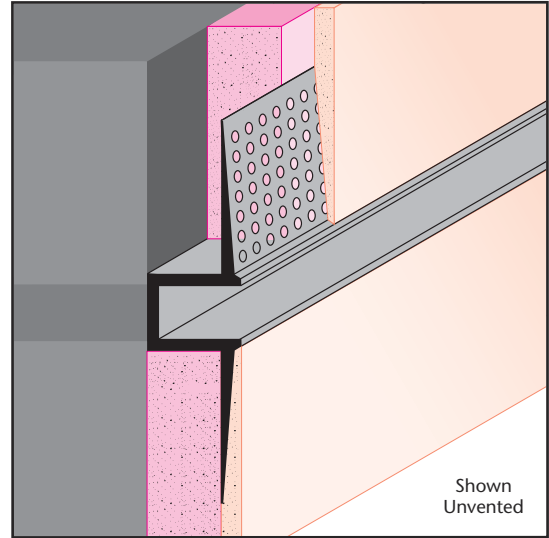


DRM: Wall Reveal

- Available With 1/8" x 1" Vent Slots or No Vents
- Available Curved Upon Request
- Available in Aluminum Alloy (6063 T-5)

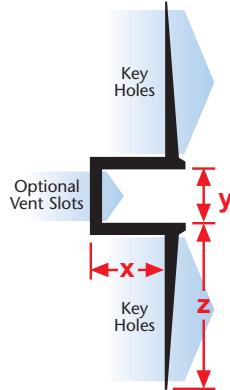
A reveal molding with tapping flanges that provides a decorative reveal in drywall. This molding is installed after the drywall board, greatly improving installation ease and time. Includes key holes for drywall mud adhesion.

Note: Not all X Sizes (Depth) or Y Sizes (Reveal) combinations are available. Please consult with customer service.



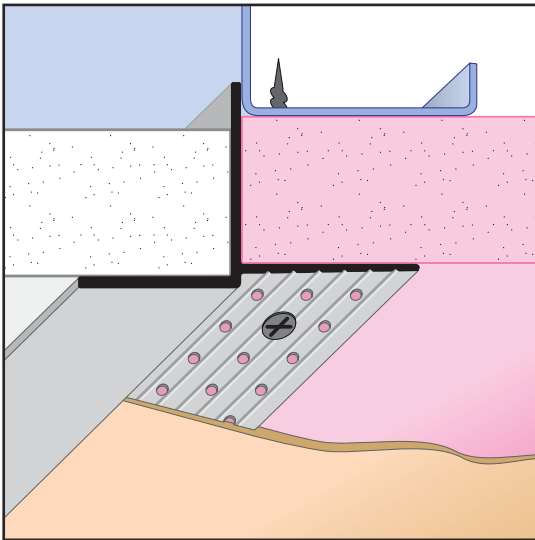
Most Common Sizes

- X Sizes:** 1/4", 1/2" or 5/8"
- Y Sizes:** 1/8", 1/4", 3/8", 1/2", 5/8", 3/4", 1", 1 1/2", 2", or 3"
- Z Sizes:** 7/8"
- Length:** 10'



Most Common Part Numbers:

DRM50 25EC	DRM: X=1/2, Vent, Y=1/4, Clear Anod, AL, 10'	DRM50 625EC12FT	DRM: X=1/2, Vent, Y=1/2, Clear Anod, AL, 12'
DRM50 25ECH	DRM: X=1/2, Vent, Y=1/4, Chem-Film, AL, 10'	DRM625 50EC	DRM: X=5/8, Y=1/2, Clear Anod, AL, 10'
DRM50 50EC	DRM: X=1/2, Vent, Y=5/8, Clear Anod, AL, 10'	DRM625 50ECH	DRM: X=5/8, Y=1/2, Chem-Film, AL, 10'
DRM50 50ECH	DRM: X=1/2, Vent, Y=1/2, Clear Anod, AL, 10'		



DMPT 75: Pocket Trim

- Available in Aluminum Alloy (6063 T-5)

The DMPT Pocket Trim provides a smooth, in-plane transition between a drywall ceiling and an acoustical ceiling, and supports the acoustical ceiling tile. Key holes on the tapping flange help key the drywall mud to the Pocket Trim.

Most Common Sizes

- X Sizes:** 3/4"
- Y Sizes:** 3/4"
- Z Sizes:** 7/8"
- Length:** 10'

