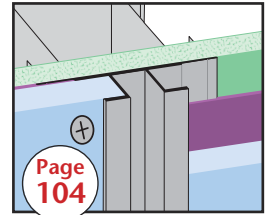


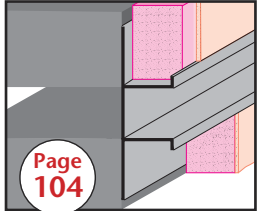
### Stockton Products' Extruded Aluminum

A comprehensive line of extruded aluminum products for drywall, plaster and Fiber Cement Panel applications. Produced in Aluminum Alloy (6063 T-5).

WPM: Plaster Soffit Reveal Molding  
See Page 129

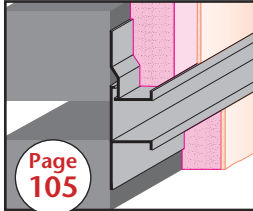


Page 104  
CR-FCP:  
Channel Reveal for FCP



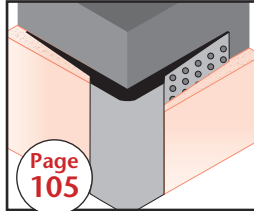
Page 104

DCS:  
Drywall Channel Screed



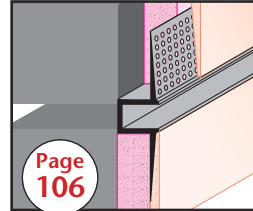
Page 105

DCS 50-2:  
Drywall Channel Screed  
50 - 2 Piece



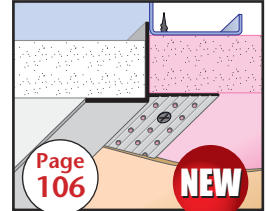
Page 105

DMCT:  
High Strength  
Corner Trim



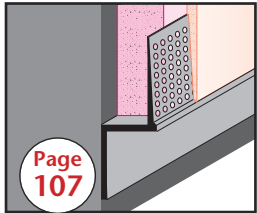
Page 106

DRM:  
Wall Reveal



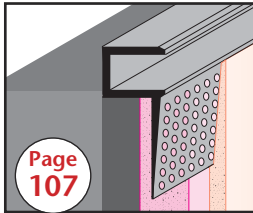
Page 106

DMPT:  
Pocket Trim



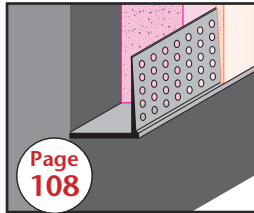
Page 107

DRMB:  
Reveal Base



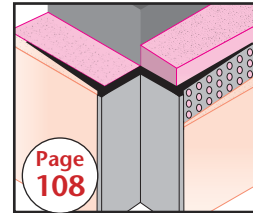
Page 107

DRMF:  
F Wall Reveal



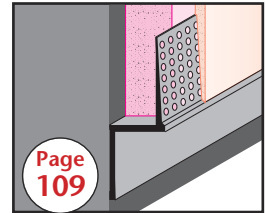
Page 108

DRML:  
Edge Trim



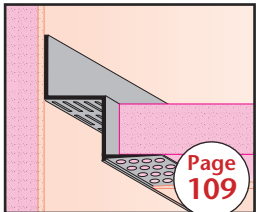
Page 108

DRMW:  
W Corner Reveal



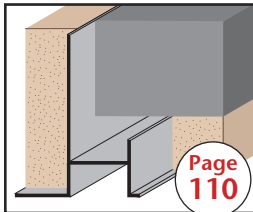
Page 109

DRMZ:  
Z Wall Reveal



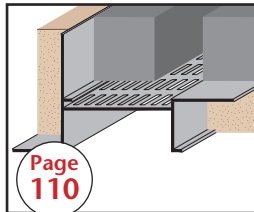
Page 109

DRWT:  
W Reveal



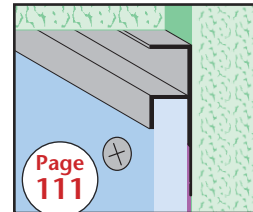
Page 110

DS:  
Drip Screed



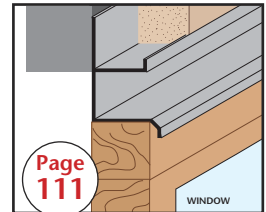
Page 110

DS300:  
Drip Screed  
3" Reveal



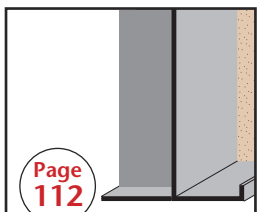
Page 111

F MOLD-FCP:  
F Mold for FCP



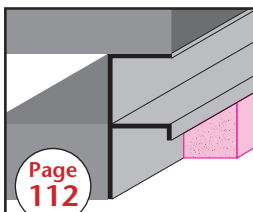
Page 111

F-D 75-75:  
F Drip Molding



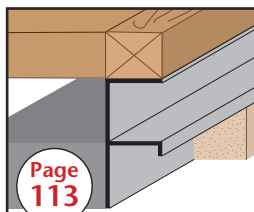
Page 112

FCM:  
Fascia Corner  
Molding



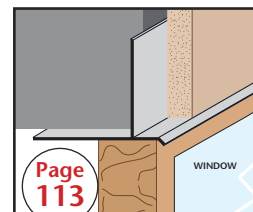
Page 112

FDM:  
F Drywall Molding



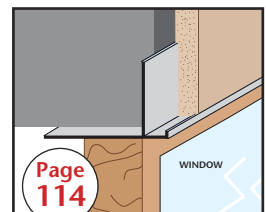
Page 113

FPM:  
F Plaster Molding



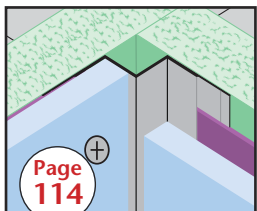
Page 113

FRWDM:  
Facia/ Recessed Window  
Drip Molding



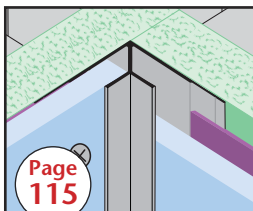
Page 114

FRWM:  
Facia/ Recessed Window  
Molding



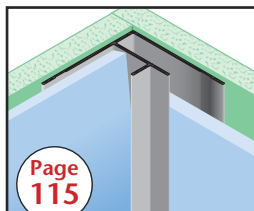
Page 114

IC-FCP:  
Inside Corner for FCP



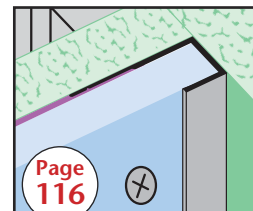
Page 115

ICR-FCP: Inside  
Corner Reveal for FCP



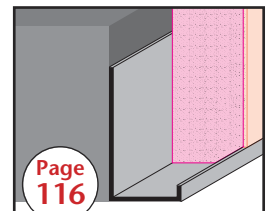
Page 115

ICT-FCP: Inside Corner  
Transition for FCP



Page 116

J MOLD-FCP:  
J Mold for FCP



Page 116

JDM:  
J Drywall Molding