

WVS: Wide V Screed

- Special Sizes Available, Contact Customer Service For Details
- Available Curved Upon Request
- Available in Aluminum (A), Copper (C), Galvanized Steel (GS), Bonderized (BN), Galvalume® (GVM), Stainless Steel (SS) or Zinc (Z)

(See Our Materials Guide For Details, Page 40)

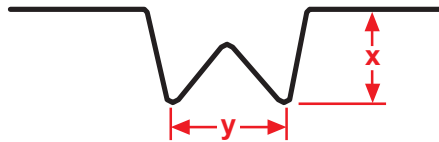
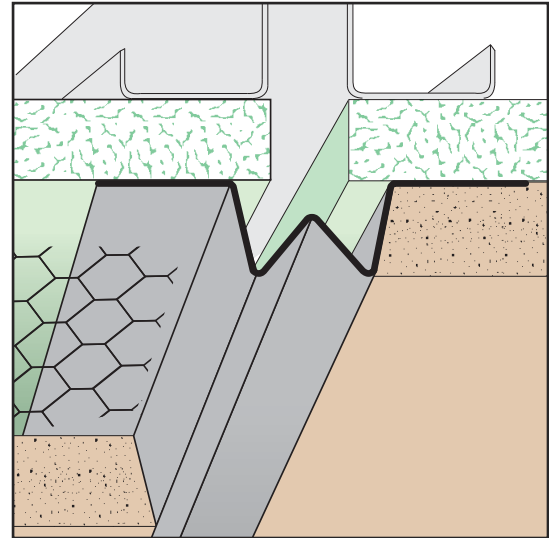
A decorative plaster control joint for conditions that require a small or minimal reveal.

Most Common Sizes

X Sizes: 1/2", 3/4", 7/8", 1" or 1 1/4"

Y Sizes: 1/2", 5/8" or 3/4"

Length: 120"



Most Common Part Numbers:

WVS034 012 WVS: X=3/4, Y=1/2, GS, 10'

WVS034 058 WVS: X=3/4, Y=5/8, GS, 10'

WVS034 058 WVS: X=3/4, Y=5/8, GS, 10'

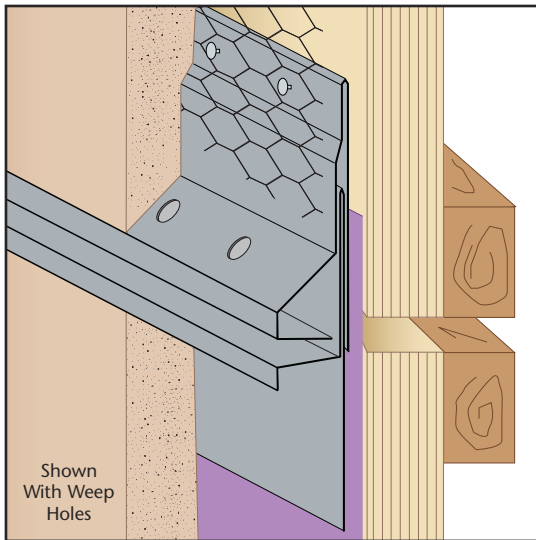
WVS078 012SS WVS: X=7/8, Y=1/2, SS, 10'

WVS078 012 WVS: X=7/8, Y=1/2, GS, 10'

WVS078 012Z WVS: X=7/8, Y=1/2, Z, 10'

WVS078 058 WVS: X=7/8, Y=5/8, GS, 10'

WVS100 034SS4 WVS: X=1, Y=3/4, SS, 4'



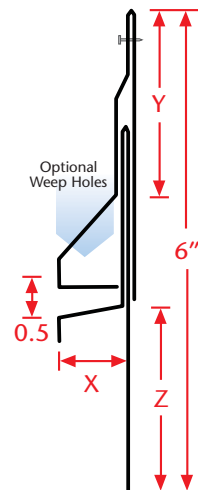
WXJ: Water Management Expansion Joint - 2 Piece

- Special Sizes Available, Contact Customer Service For Details
- Superior Moisture Protection™
- Available With 1/4" Weep Holes or No Weep Holes
- Available in Aluminum (A), Copper (C), Galvanized Steel (GS), Bonderized (BN), Galvalume® (GVM), Stainless Steel (SS) or Zinc (Z)

(See Our Materials Guide For Details, Page 40)

Similar to the M-Slide Expansion Joint™ design, the WXJ is a two piece expansion joint that provides Superior Moisture Protection™ while offering movement at floor lines and other conditions requiring an expansion joint. Unique design provides a uniform look to the plaster return keys on both top and bottom legs when finished. Provides 1" of vertical movement.

US Patent D850656



Most Common Sizes

X Sizes: 5/8", 3/4", 7/8", 1", 1 3/8" or 1 1/2"

Y Sizes: 2 1/2" or 3"

Z Sizes: 2 1/2" or 3"

Length: 120"



Most Common Part Numbers:

WXJ078 300 300 WXJ: X=7/8, Y=3, Z=3, GS, 10'