

STU: Custom Stud

- Special Sizes Available, Contact Customer Service For Details
- Available in Punched or Unpunched
- Available in Galvanized Steel (GS)
(See Our Materials Guide For Details, Page 40)

Stockton Products' Custom Stud, produced to ASTM C955 standards, for load-bearing and curtain-wall framing. We offer our custom studs punched to allow conduit installation and wall bridging, or unpunched if preferred. Custom sizes and hole placement is available upon request.

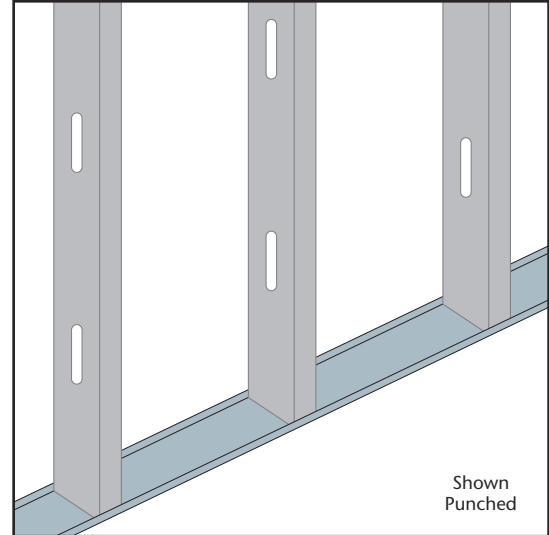
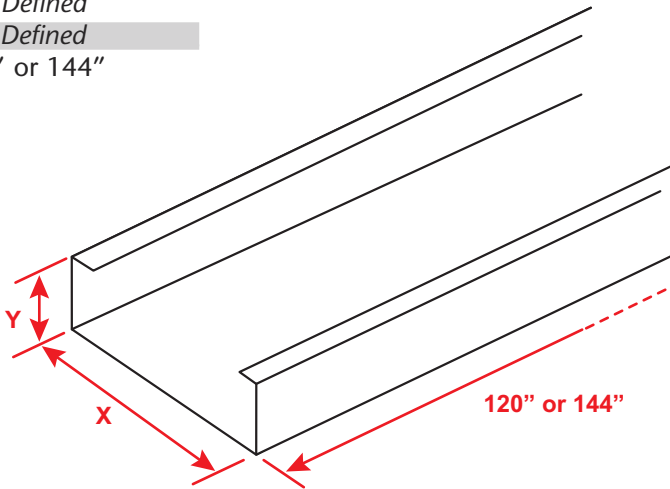
NOTE: 3/8" returns on 14 ga or thinner, 3/4" returns on 12 ga or thicker.

Most Common Sizes

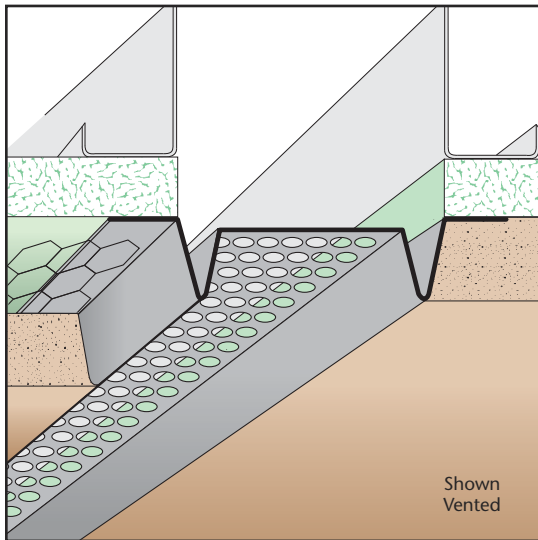
X Sizes: User Defined

Y Sizes: User Defined

Length: 120" or 144"



NEW



SVR: Soffit Vent/Reveal Screed

- Special Sizes Available, Contact Customer Service For Details
- Available With 1/8", 1/4" Vent Holes or No Vent
- Available Curved Upon Request
- Available in Aluminum (A), Copper (C), Galvanized Steel (GS), Bonderized (BN), Galvalume® (GVM), Stainless Steel (SS) or Zinc (Z)
(See Our Materials Guide For Details, Page 40)

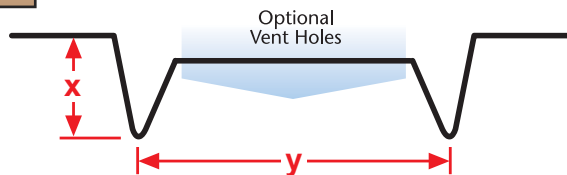
Standard soffit vent provides required perimeter airflow into soffit air space. Also available "non vented" for creating shadow lines/accent stripes in the stucco exterior, while providing crack control.

Most Common Sizes

X Sizes: 3/8", 1/2", 5/8", 3/4", 7/8", 1" or 1 3/8"

Y Sizes: 3/4", 1", 1 1/2", 2", 2 1/2", 3", 3 1/2", 4", 4 1/2", 5", 5 1/2" or 6"

Length: 120"



Most Common Part Numbers:

SVR012 034 SVR: X=1/2, Y=3/4, GS, 10'

SVR012V200 SVR: X=1/2, 1/8 Vent, Y=2, GS, 10'

SVR034V200 SVR: X=3/4, 1/8 Vent, Y=2, GS, 10'

SVR034V200J SVR: X=3/4, 1/4 Vent, Y=2, GS, 10'

SVR034V300 SVR: X=3/4, 1/8 Vent, Y=3, GS, 10'

SVR038 100 SVR: X=3/8, Y=1, GS, 10'

SVR078V200 SVR: X=7/8, 1/8 Vent, Y=2, GS, 10'

SVR078V200J SVR: X=7/8, 1/4 Vent, Y=2, GS, 10'