



**SPECIAL SIZES AVAILABLE!**

Contact Stockton  
Custom Fabrication  
at (877) 786-2587

## SPS: Single Point Screed

- Special Sizes Available, Contact Customer Service For Details
  - Available With 1/8", 1/4" Vent Holes or No Vent
  - Available Curved Upon Request
  - Available in Aluminum (A), Copper (C), Galvanized Steel (GS), Bonderized (BN), Galvalume® (GVM), Stainless Steel (SS) or Zinc (Z)
- (See Our Materials Guide For Details, Page 40)

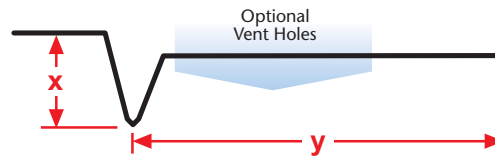
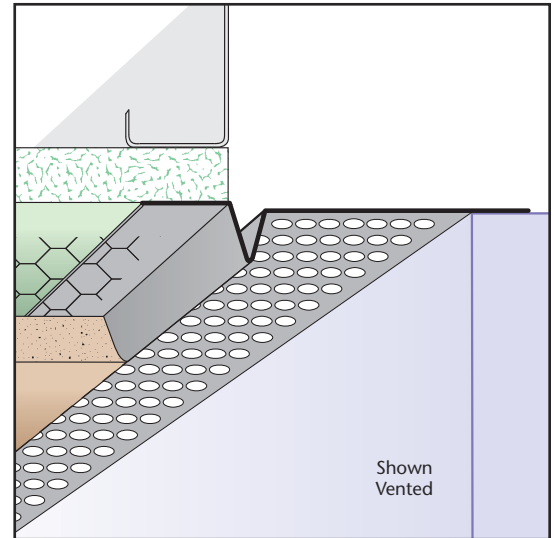
Single pointed vent used a at soffit/wall condition where uneven surfaces (such as split-faced block) exist providing perimeter airflow into the soffit. Available non-vented for use as a decorative reveal upon request.

### Most Common Sizes

**X Sizes:** 3/8", 1/2", 5/8", 3/4", 7/8", 1" or 1 3/8"

**Y Sizes:** 3/4", 1", 1 1/2", 2", 2 1/2", 3", 3 1/2", 4", 4 1/2", 5", 5 1/2" or 6"

**Length:** 120"



### Most Common Part Numbers:

**SPS034V200** SPS: X=3/4, 1/8 Vent, Y=2, GS, 10'

**SPS034V200J** SPS: X=3/4, 1/4 Vent, Y=2, GS, 10'

**SPS034V212J** SPS: X=3/4, 1/4 Vent, Y=2 1/2, GS, 10'

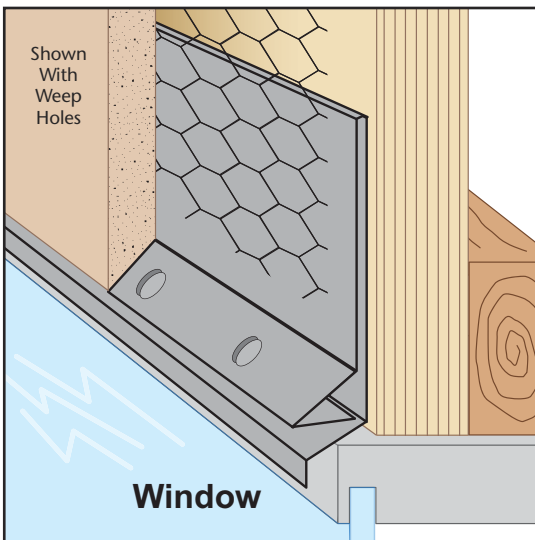
**SPS034V300** SPS: X=3/4, 1/8 Vent, Y=3, GS, 10'

**SPS034V300J** SPS: X=3/4, 1/4 Vent, Y=3, GS, 10'

**SPS034V312J** SPS: X=3/4, 1/4 Vent, Y=3 1/2, GS, 10'

**SPS078V112J** SPS: X=7/8, 1/4 Vent, Y=1 1/2, GS, 10'

**SPS078V200J** SPS: X=7/8, 1/4 Vent, Y=2, GS, 10'



## SSF: Stucco Screed Flashing (#3)

- Special Sizes Available, Contact Customer Service For Details
  - Superior™ Moisture Protection
  - Available With 1/4" Weep Holes or No Holes
  - Available Curved Upon Request
  - Available in Aluminum (A), Copper (C), Galvanized Steel (GS), Bonderized (BN), Galvalume® (GVM), Stainless Steel (SS) or Zinc (Z)
- (See Our Materials Guide For Details, Page 40)

SSF combines a stucco screed and head flashing into one uniformed piece. Weep screed allows moisture to escape and travel over top of flashing. SSF provides ideal water management at window head, floor line and transition to dissimilar materials. Available with and without weep holes.

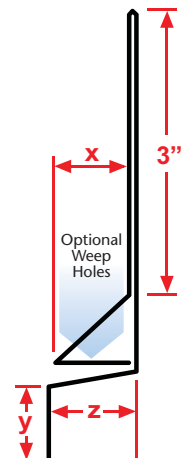
### Most Common Sizes

**X Sizes:** 1/2", 3/4", 7/8", 1" or 1 1/4"

**Y Sizes:** 3/4", 1 1/4", 1 1/2" or 2"

**Z Sizes:** 3/4", 1", 1 1/4", 1 1/2", 1 3/4", 2", 2 1/2" or 3"

**Length:** 120"



### Most Common Part Numbers:

**SSF012 034 034** SSF: X=1/2, Y=3/4, Z=3/4, GS, 10'

**SSF034 012 100** SSF: X=3/4, Y=1/2, Z=1, GS, 10'

**SSF034 034 100** SSF: X=3/4, Y=3/4, Z=1, GS, 10'

**SSF078 012 100** SSF: X=7/8, Y=1/2, Z=1, GS, 10'

**SSF078 012 112** SSF: X=7/8, Y=1/2, Z=1 1/2, GS, 10'

**SSF078 034 078** SSF: X=7/8, Y=3/4, Z=7/8, GS, 10'

**SSF078W012 118J60IN** SSF: X=7/8, 1/4 Wp, Y=1/2,

Z=1 1/8, GS, 5'