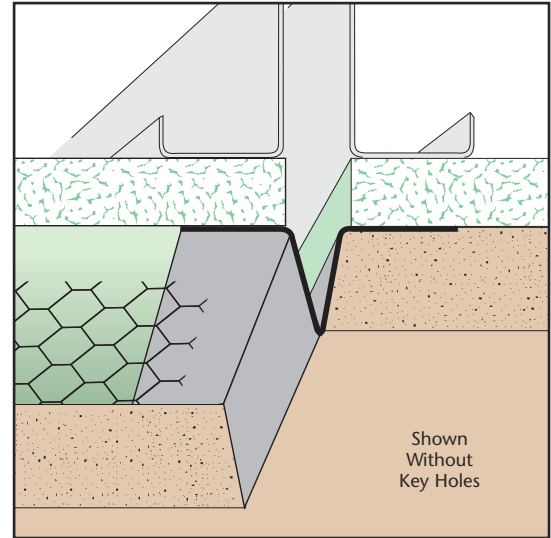


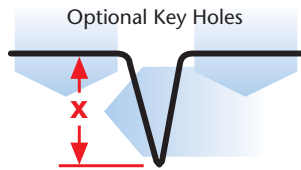
PBS: Pointed Base Screed

- Special Sizes Available, Contact Customer Service For Details
 - Available With 1/2" Key Holes or No Holes
 - Available in Aluminum (A), Copper (C), Galvanized Steel (GS), Bonderized (BN), Galvalume® (GVM), Stainless Steel (SS) or Zinc (Z)
- (See Our Materials Guide For Details, Page 40)

Pointed base screed functions as a control joint and depth screed in the plaster. The base screed comes with or without 1/2" key holes in the flange for a mechanical key.

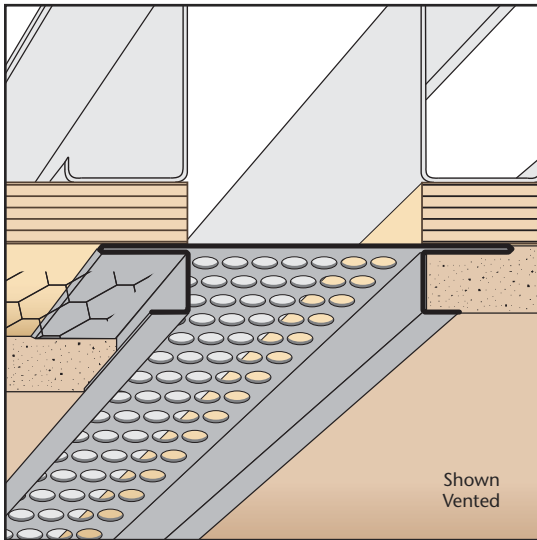


Most Common Sizes
X Sizes: 1/2", 3/4", 7/8" or 1 1/4"
Length: 120"



Most Common Part Numbers:

PBS012 000	PBS: X=1/2, GS, 10'	PBS078 000	PBS: X=7/8, GS, 10'
PBS012W000	PBS: X=1/2, 1/8 Weep Hole, GS, 10'	PBS078 000SS	PBS: X=7/8, SS, 10'
PBS034 000SS	PBS: X=3/4, SS, 10'	PBS078W000	PBS: X=7/8, 1/8 Weep Hole, GS, 10'
PBS034W000	PBS: X=3/4, 1/8 Weep Hole, GS, 10'	PBS114 000	PBS: X=1 1/4, GS, 10'



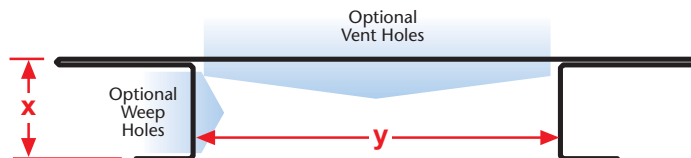
PCS: Plaster Channel Screed

- Special Sizes Available, Contact Customer Service For Details
 - Available With 1/8", 1/4" Vent Holes or No Vent
 - Available Curved Upon Request
 - Available in Aluminum (A), Copper (C), Galvanized Steel (GS), Bonderized (BN), Galvalume® (GVM), Stainless Steel (SS) or Zinc (Z)
- (See Our Materials Guide For Details, Page 40)

Channel screed style reveal that provides decorative shadow lines and accent stripes in an exterior finish. Has return keys for screeding of stucco. Can also be ordered vented for a perimeter air flow application.

Note: For Y Sizes over 2", use extruded aluminum or ECS.

Most Common Sizes
X Sizes: 3/8", 1/2", 5/8", 3/4", 7/8", 1" or 1 3/8"
Y Sizes: 1/2", 3/4", 1", 1 1/2", 2", 2 1/2" or 3"
Length: 120"



Most Common Part Numbers:

PCS75 00 100BEC	PCS: X=3/4, Y=1, Clear Anod, Side B, 10'	PCS75 50EC	PCS: X=3/4, 1/8 Vent, Y=1/2, Clear Anod, 10'
PCS75 100EC	PCS: X=3/4, Y=1, Clear Anodize, 10'	PCS75 75EC	PCS: X=3/4, 1/8 Vent, Y=3/4, Clear Anod, 10'
PCS75 200EC	PCS: X=3/4, Y=2, Clear Anodize, 10'	PCS75V200EC	PCS: X=3/4, 1/8 Vent, Y=2, Clear Anod, 10'
PCS75 25 25EC	PCS: X=3/4, Y=1/2, Clear Anodize, 10'	PCS75V300EC	PCS: X=3/4, 1/8 Vent, Y=3, Clear Anod, 10'