



**SPECIAL SIZES AVAILABLE!**

Contact Stockton Custom Fabrication at (877) 786-2587

**METAL**

## NFD: #5 Drip

- Special Sizes Available, Contact Customer Service For Details
  - Superior™ Moisture Protection
  - Available With 1/2" Key Holes or No Holes
  - Available in Aluminum (A), Copper (C), Galvanized Steel (GS), Bonderized (BN), Galvalume® (GVM), Stainless Steel (SS) or Zinc (Z)
- (See Our Materials Guide For Details, Page 40)

A drip screed that helps align the soffit to give it a clean, straight edge at the fascia/soffit line.

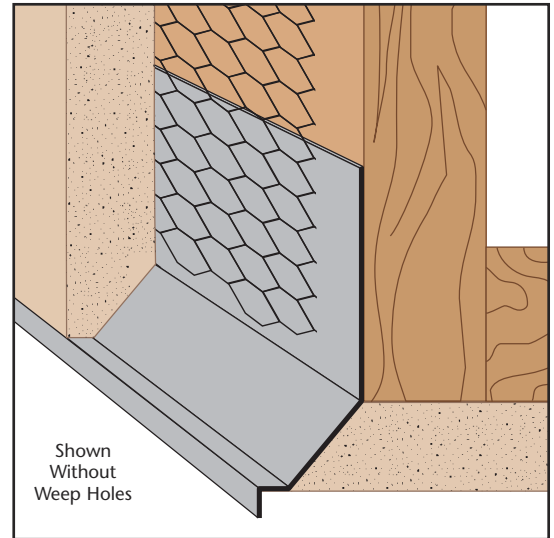
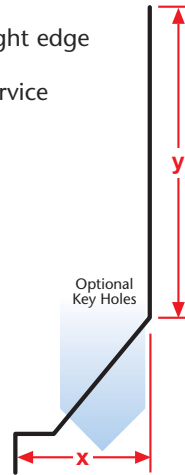
**Note:** Curving this item is limited. Please consult customer service for more informiton.

### Most Common Sizes

**X Sizes:** 3/4", 7/8" or 1 3/8"

**Y Sizes:** 2", 3 1/2" or 4"

**Length:** 120"



### Most Common Part Numbers:

**NFD034 312** NFD: X=3/4, Y=3 1/2, GS, 10'

**NFD078 200** NFD: X=7/8, Y=2, GS, 10'

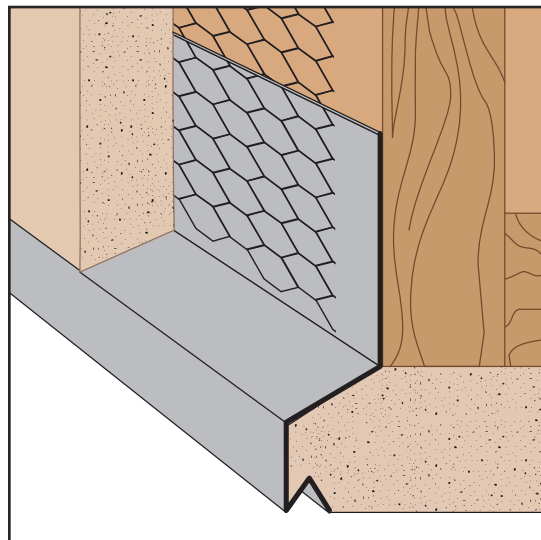
**NFD078 312** NFD: X=7/8, Y=3 1/2, GS, 10'

**NFD078 400** NFD: X=7/8, Y=4, GS, 10'

**NFD078W200** NFD: X=7/8, 1/8 Weep Hole, Y=2, GS, 10'

**NFD078W312** NFD: X=7/8, 1/8 Weep Hole, Y=3 1/2, GS, 10'

**NFD138 312** NFD: X=1 3/8, Y=3 1/2, GS, 10'



## NTD: #2 Drip

- Special Sizes Available, Contact Customer Service For Details
  - No Weep Holes
  - Available Curved Upon Request
  - Available in Aluminum (A), Copper (C), Galvanized Steel (GS), Bonderized (BN), Galvalume® (GVM), Stainless Steel (SS) or Zinc (Z)
- (See Our Materials Guide For Details, Page 40)

A plaster drip screed that helps align the soffit to give it a clean, straight edge at the fascia/soffit line. Provides a unique 3/4" "flush" reveal at the fascia.

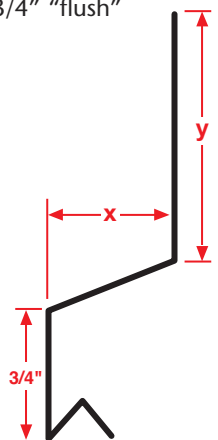
**Note:** Curving this item is limited. Please consult customer service for more informiton.

### Most Common Sizes

**X Sizes:** 7/8" or 1 3/8"

**Y Sizes:** 1 3/4" or 3 1/2"

**Length:** 120"



### Most Common Part Numbers:

**NTD078 134** NTD: X=7/8, Y=1 3/4, GS, 10'

**NTD078 134A** NTD: X=7/8, Y=1 3/4, A, 10'

**NTD078 134C** NTD: X=7/8, Y=1 3/4, C, 10'

**NTD078 134Z** NTD: X=7/8, Y=1 3/4, Z, 10'

**NTD078 312** NTD: X=7/8, Y=3 1/2, GS, 10'

**NTD100 312SS4** NTD: X=1, Y=3 1/2, SS, 4'

**NTD138 312** NTD: X=1 3/8, Y=3 1/2, GS, 10'