



SPECIAL SIZES AVAILABLE!

Contact Stockton Custom Fabrication at (877) 786-2587

METAL

M-S: M Screed

- Special Sizes Available, Contact Customer Service For Details
 - Available in Aluminum (A), Copper (C), Galvanized Steel (GS), Bonderized (BN), Galvalume® (GVM), Stainless Steel (SS) or Zinc (Z)
- (See Our Materials Guide For Details, Page 40)

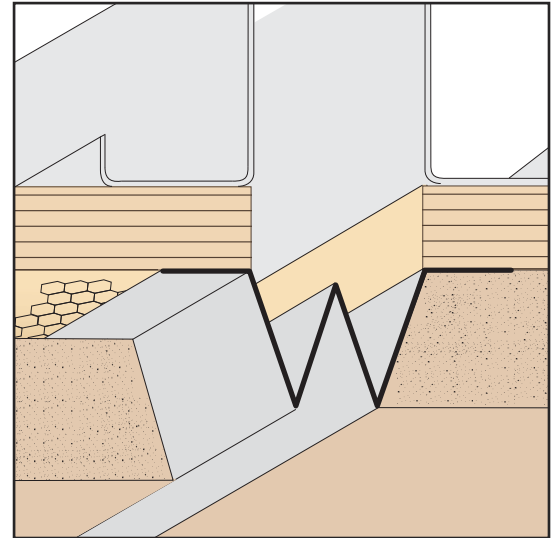
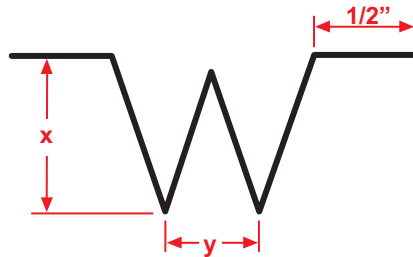
A versatile control joint used primarily to relieve cracking. Provides a decorative reveal.

Most Common Sizes

X Sizes: 3/4" or 7/8"

Y Sizes: 1/2" or 5/8"

Length: 120"



Most Common Part Numbers:

M S012 012 M-S: X=1/2, Y=1/2, GS, 10'

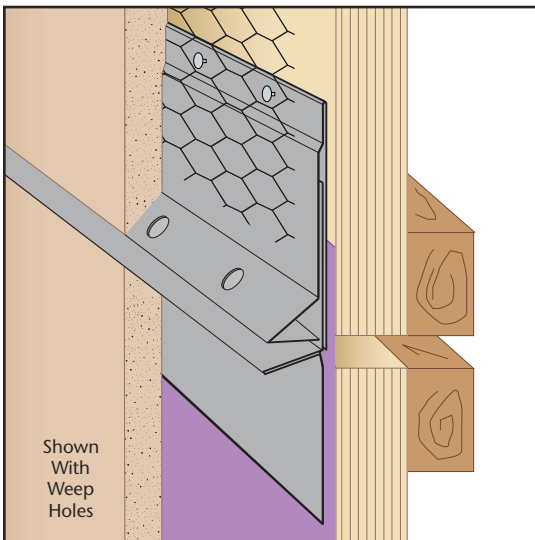
M S034 012 M-S: X=3/4, Y=1/2, GS, 10'

M S034 012 M-S: X=3/4, Y=1/2, GS, 10'

M S034 058 M-S: X=3/4, Y=5/8, GS, 10'

M S078 012 M-S: X=7/8, Y=1/2, GS, 10'

M S078 058 M-S: X=7/8, Y=5/8, GS, 10'



MSC: M-Slide Expansion Joint™ - 2 Piece

- Special Sizes Available, Contact Customer Service For Details
- Does Not Have A Plaster Return Key
- Superior Moisture Protection™
- Available With 1/4" Weep Holes or No Holes
- Available in Aluminum (A), Copper (C), Galvanized Steel (GS), Bonderized (BN), Galvalume® (GVM), Stainless Steel (SS) or Zinc (Z)

(See Our Materials Guide For Details, Page 40)

The self-aligning, dual function M-Slide expansion joint provides movement capability at the floor line while providing a water management system that will allow moisture to release from the top ground and lock out moisture from the bottom ground. Provides 1" of vertical movement.

US Patent 7,673,421 B2

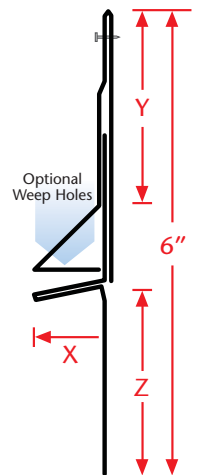
Most Common Sizes

X Sizes: 5/8", 3/4", 7/8", 1", 1 3/8" or 1 1/2"

Y Sizes: 2 1/2" or 3"

Z Sizes: 2 1/2", 3" or 3 1/2"

Length: 120"



Most Common Part Numbers:

MSC034 212 312 MSC: X=3/4, Y=2 1/2, Z=3 1/2, GS, 10'

MSC034 312 212 MSC: X=3/4, Y=3 1/2, Z=3 1/2, GS, 10'

MSC078 300 300 MSC: X=7/8, Y=3, Z=3, GS, 10'

MSC078 300 300Z MSC: X=7/8, Y=3, Z=3, Z, 10'

MSC078 312 212 MSC: X=7/8, Y=3 1/2, Z=3 1/2, GS, 10'

MSC078 312 312 MSC: X=7/8, Y=3 1/2, Z=3 1/2, GS, 10'

MSC100W300 300JSS4 MSC: X=1, 1/4 Weep, Y=3, Z=3, SS, 4'