



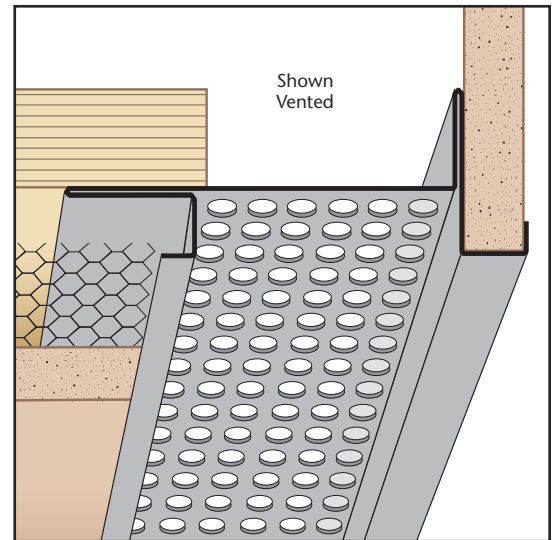
SPECIAL SIZES AVAILABLE!

Contact Stockton Custom Fabrication at (877) 786-2587

FSM: Fascia Soffit Mold

- Special Sizes Available, Contact Customer Service For Details
 - Available With 1/8", 1/4" Vent Holes or No Vent
 - Available With 1/8" Weep Holes or No Weep Holes
 - Available Curved Upon Request
 - Available in Aluminum (A), Copper (C), Galvanized Steel (GS), Bonderized (BN), Galvalume® (GVM), Stainless Steel (SS) or Zinc (Z)
- (See Our Materials Guide For Details, Page 40)

Creates a decorative reveal at fascia/soffit transition providing a small overhang drip edge. Has return keys for screeding of stucco. Extended attachment flanges provides area to overlay lathing. Can be vented for perimeter airflow into space above.

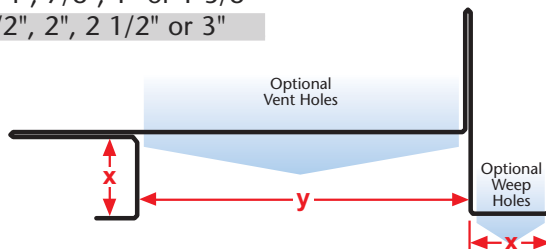


Most Common Sizes

X Sizes: 1/2", 5/8", 3/4", 7/8", 1" or 1 3/8"

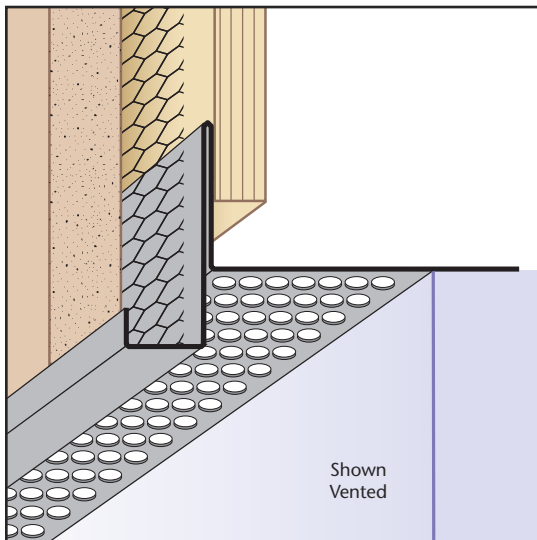
Y Sizes: 3/4", 1", 1 1/2", 2", 2 1/2" or 3"

Length: 120"



Most Common Part Numbers:

FSM034 078GA20	FSM: X=3/4, Y=7/8, 20 ga GS, 10'
FSM078 034	FSM: X=7/8, Y=3/4, GS, 10'
FSM100V200W100L	FSM: X=1, 1/8 Vent, Y=2, 1/2 Weep, 1 Return, GS, 10'
FSM100V200W138L	FSM: X=1, 1/8 Vent, Y=2, 1/2 Weep, 1 3/8 Return, GS, 10'



FTM: Fascia Transition Mold

- Special Sizes Available, Contact Customer Service For Details
 - Available With 1/8", 1/4" Vent Holes or No Vent
 - Available With 1/8" Weep Holes or No Weep Holes
 - Available in Aluminum (A), Copper (C), Galvanized Steel (GS), Bonderized (BN), Galvalume® (GVM), Stainless Steel (SS) or Zinc (Z)
- (See Our Materials Guide For Details, Page 40)

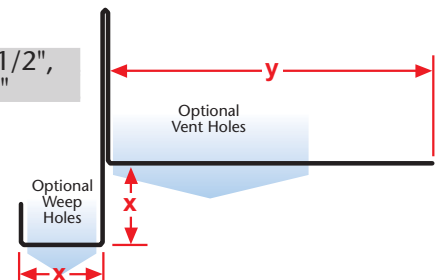
Creates a fascia/soffit transition providing a small overhang to prevent moisture from migrating back to the soffit surface. Prevents water staining on plaster by creating a drip edge. Can be vented for perimeter airflow into space above the soffit.

Most Common Sizes

X Sizes: 1/2", 5/8", 3/4", 7/8", 1" or 1 3/8"

Y Sizes: 3/4", 1", 1 1/2", 2", 2 1/2", 3", 3 1/2", 4" or 4 1/2"

Length: 120"



Part Numbers:

FTM034 138	FTM: X=3/4, Y=1 3/8, GS, 10'	FTM078V312	FTM: X=7/8, 1/8 Vent, Y=3 1/2, GS, 10'
FTM034V138	FTM: X=3/4, 1/8 Vent, Y=1 3/8, GS, 10'	FTM078V412	FTM: X=7/8, 1/8 Vent, Y=4 1/2, GS, 10'
FTM034V212	FTM: X=3/4, 1/8 Vent, Y=2 1/2, GS, 10'	FTM078W312LZ	FTM: X=7/8, 1/2 Weep Hole, Y=3 1/2, Z, 10'
FTM078V200	FTM: X=7/8, 1/8 Vent, Y=2, GS, 10'		