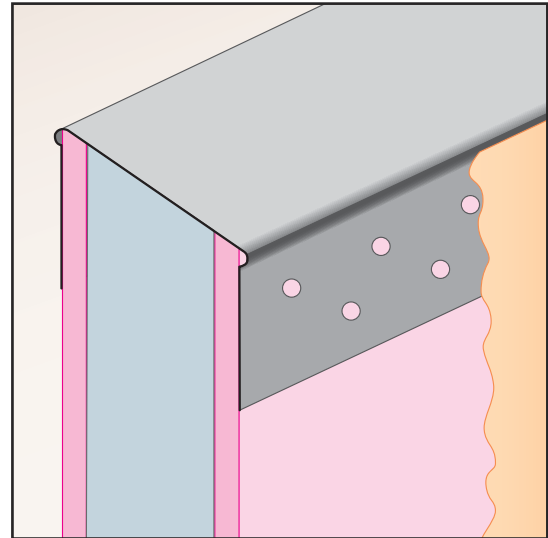




ECX: End Cap

- Special Sizes Available, Contact Customer Service For Details
 - Available Anodized, PaintLoc (PTL) or Jet Kote (JTC) Finished
 - Available in Aluminum (A)
- (See Our Materials Guide For Details, Page 40)

Used as an end cap to finish off partition walls. Standard length is 10 foot. The ECX End Cap has holes in the taping flange for keying the drywall mud.

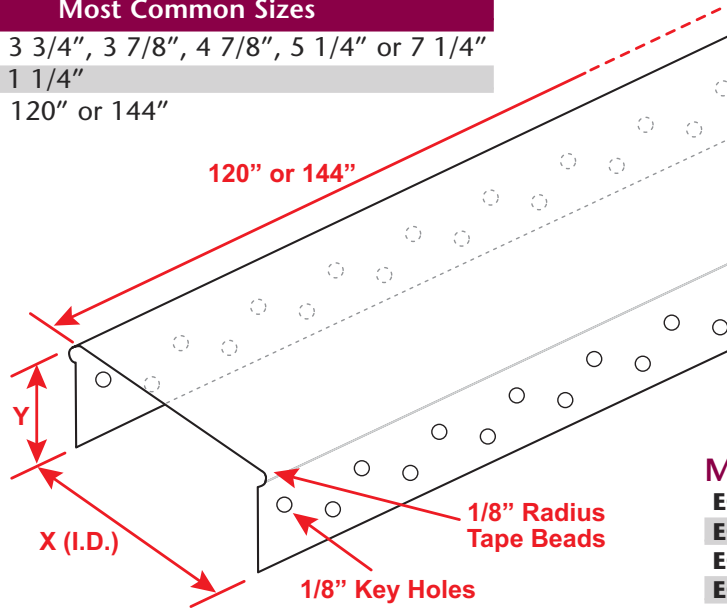


Most Common Sizes

X Sizes: 3 3/4", 3 7/8", 4 7/8", 5 1/4" or 7 1/4"

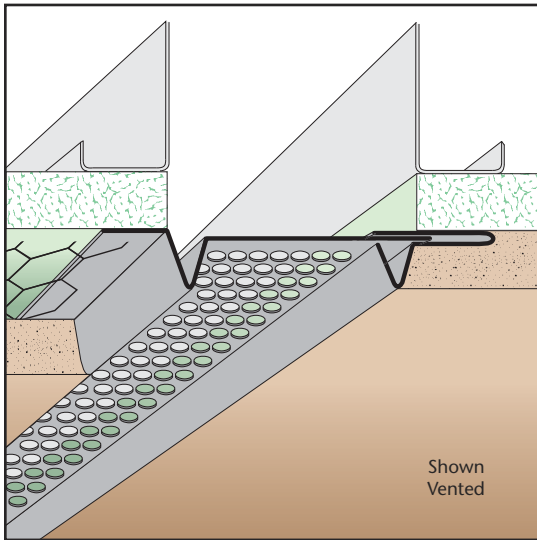
Y Sizes: 1 1/4"

Length: 120" or 144"



Most Common Part Numbers:

ECX3750JTC	ECX: X=3 3/4, A, 10', JTC
ECX3875JTC	ECX: X=3 7/8, A, 10', JTC
ECX4875JTC	ECX: X=4 7/8, A, 10', JTC
ECX725JTC	ECX: X=7 1/4, A, 10', JTC



EVS: Expansion Vent Screed - 2 Piece

- Special Sizes Available, Contact Customer Service For Details
 - Available With 1/8", 1/4" Vent Holes or No Holes
 - Available in Aluminum (A), Copper (C), Galvanized Steel (GS), Bonderized (BN), Galvalume® (GVM), Stainless Steel (SS) or Zinc (Z)
- (See Our Materials Guide For Details, Page 40)

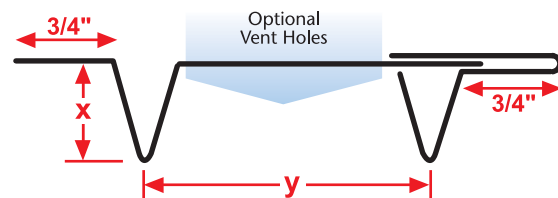
Adjustable version of our standard vent screed that permits movement in a double stud condition while providing required airflow into space above. Can also be ordered non-vented for use as a horizontal expansion joint providing movement capabilities at a floor line.

Most Common Sizes

X Sizes: 3/8", 1/2", 3/4", 7/8", 1" or 1 3/8"

Y Sizes: 3/4", 1", 1 1/2", 2", 2 1/2", 3", 3 1/2", 4", 4 1/2", 5", 5 1/2" or 6"

Length: 120"



Most Common Part Numbers:

EVS012 034	EVS: X=1/2, Y=3/4, GS, 10'	EVS034V300SS	EVS: X=3/4, 1/8 Vent, Y=3, SS, 10'
EVS012V100C	EVS: X=1/2, 1/8 Vent, Y=1, C, 10'	EVS078 034	EVS: X=7/8, Y=3/4, GS, 10'
EVS034 400	EVS: X=3/4, Y=4, GS, 10'	EVS078 034AC	EVS: X=7/8, Y=3/4, GS, 10'
EVS034V100	EVS: X=3/4, 1/8 Vent, Y=1, GS, 10'	EVS078 200	EVS: X=7/8, Y=2, GS, 10'