



SPECIAL SIZES AVAILABLE!

Contact Stockton Custom Fabrication at (877) 786-2587

METAL

DWT: Drywall Wall Trim

- Special Sizes Available, Contact Customer Service For Details
 - Available With Vent Holes
 - Available in Aluminum (A), Copper (C), Galvanized Steel (GS), Bonderized (BN), Galvalume® (GVM), Stainless Steel (SS) or Zinc (Z)
- (See Our Materials Guide For Details, Page 40)

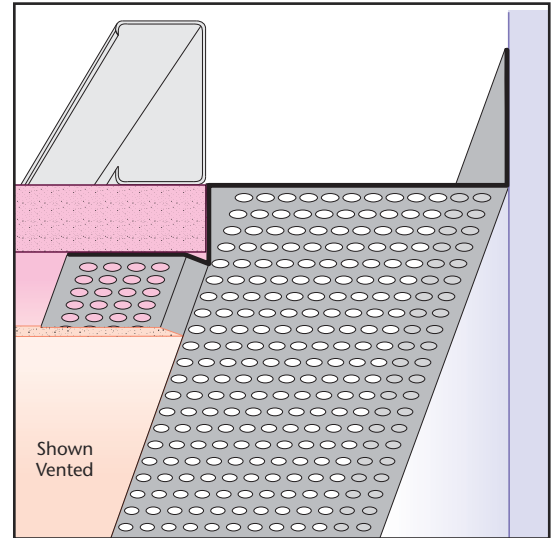
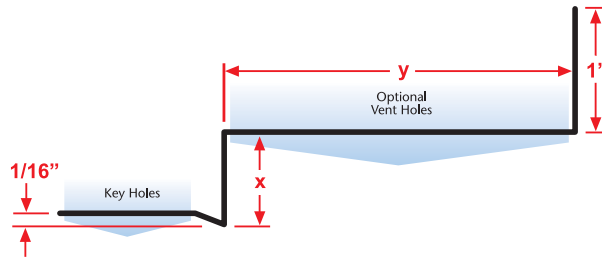
A multi-functional drywall product that makes a smooth transition from a drywall ceiling to the wall. Includes key holes for drywall mud adhesion.

Most Common Sizes

X Sizes: 1/2" or 5/8"

Y Sizes: 1/2", 3/4", 1", 1 1/2", 2", 2 1/2", 3", 3 1/2", 4" or 4 1/2"

Length: 120"



Most Common Part Numbers:

DWT012 012C DWT: X=1/2, Y=1/2, C, 10'

DWT012V012SS DWT: X=1/2, 1/8 Vent, Y=1/2, SS, 10'

DWT058 200Z DWT: X=5/8, Y=2, Z, 10'

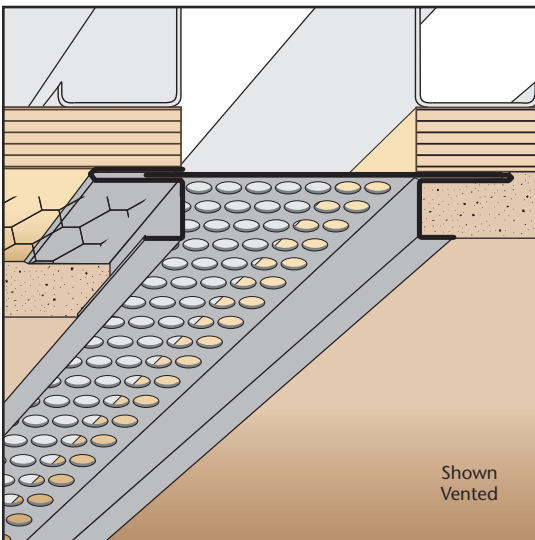
DWT058V112A DWT: X=5/8, 1/8 Vent, Y=1 1/2, A, 10'

DWT058V200SS DWT: X=5/8, 1/8 Vent, Y=2, SS, 10'

DWT058V212 DWT: X=5/8, 1/8 Vent, Y=2 1/2, GS, 10'

DWT058V300JA DWT: X=5/8, 1/4 Vent, Y=3, A, 10'

DWT058V400JA DWT: X=5/8, 1/4 Vent, Y=4, A, 10'



ECS: Expansion Channel Screed (#40) - 2 Piece

- Special Sizes Available, Contact Customer Service For Details
 - Available With 1/8", 1/4" Vent Holes or No Vent
 - Available in Aluminum (A), Copper (C), Galvanized Steel (GS), Bonderized (BN), Galvalume® (GVM), Stainless Steel (SS) or Zinc (Z)
- (See Our Materials Guide For Details, Page 40)

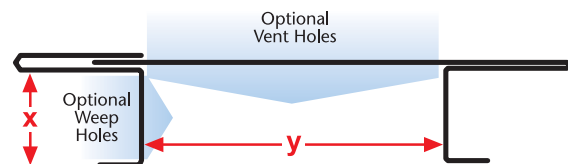
Adjustable version of our Plaster Channel Screed that permits movement. Can be vented for air flow.

Most Common Sizes

X Sizes: 3/8", 1/2", 5/8", 3/4", 7/8" or 1"

Y Sizes: 3/4", 1", 1 1/2", 2", 2 1/2", 3" or 3 1/2"

Length: 120"



Most Common Part Numbers:

ECS034 012 ECS: X=3/4, Y=1/2, GS, 10'

ECS034 100 ECS: X=3/4, Y=1, GS, 10'

ECS038V312 ECS: X=3/8, 1/8 Vent, Y=3 1/2, GS, 10'

ECS058V112 ECS: X=5/8, 1/8 Vent, Y= 1 1/2, GS, 10'

ECS058V112J ECS: X=5/8, 1/4 Vent, Y=1 1/2, GS, 10'

ECS078 038 ECS: X=7/8, Y=3/8, GS, 10'

ECS078 300 ECS: X=7/8, Y=3, GS, 10'

ECS138 012 ECS: X=1 3/8, Y=1/2, GS, 10'