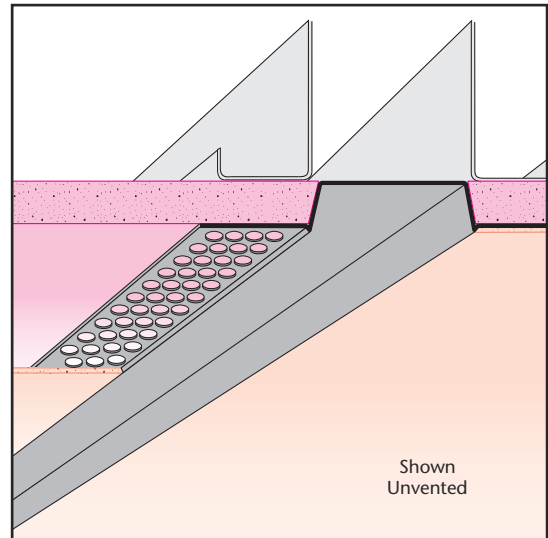




DWR: Drywall Reveal

- Special Sizes Available, Contact Customer Service For Details
 - Available With 1/8", 1/4" Vent Holes or No Vent
 - Available Curved Upon Request
 - Available in Aluminum (A), Copper (C), Galvanized Steel (GS), Bonderized (BN), Galvalume® (GVM), Stainless Steel (SS) or Zinc (Z)
- (See Our Materials Guide For Details, Page 40)

Creates a decorative reveal in the drywall. The molding is attached after the drywall is installed, minimizing labor. Can be vented to permit air flow. Includes key holes for drywall mud adhesion.

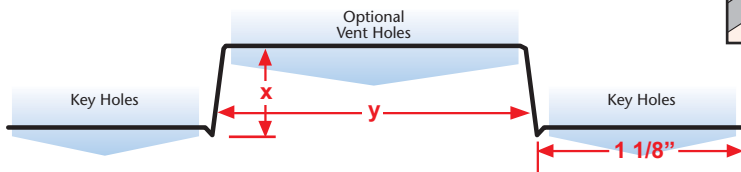


Most Common Sizes

X Sizes: 1/2" or 5/8"

Y Sizes: 1 1/2", 2", 2 1/2", 3", 3 1/2", 4" or 4 1/2"

Length: 120"



Most Common Part Numbers:

DWR012V200 DWR: X=1/2, 1/8 Vent, Y=2, GS, 10'

DWR012V300 DWR: X=1/2, 1/8 Vent, Y=3, GS, 10'

DWR012V400J DWR: X=1/2, 1/4 Vent, Y=4, GS, 10'

DWR058V200 DWR: X=5/8, 1/8 Vent, Y=2, GS, 10'

DWR058V300 DWR: X=5/8, 1/8 Vent, Y=3, GS, 10'

DWR058V300J DWR: X=5/8, 1/4 Vent, Y=3, GS, 10'

DWR058V600 DWR: X=5/8, 1/8 Vent, Y=6, GS, 10'

DWR258 300A DWR: X=2 5/8, Y=3, A, 10'

Stockton

CUSTOM FABRICATION

Stockton Custom Fabrication

Stockton Products™ Has Made Some Exciting Changes In Our Livermore And Orange Facilities.

In order to expand our metal forming capabilities, we've made a significant investment in state-of-the-art equipment and experienced personnel to accomplish this goal.

Established as "Stockton Custom Fabrication", this new division will permit us to greatly expand our product line and market reach and give us the ability to offer all types of custom fabricated metal items as well as expand our current line of stock metal items through innovation and cost saving economies.



See Page 4 & 5 For More Information!