



SPECIAL SIZES AVAILABLE!

Contact Stockton Custom Fabrication at (877) 786-2587

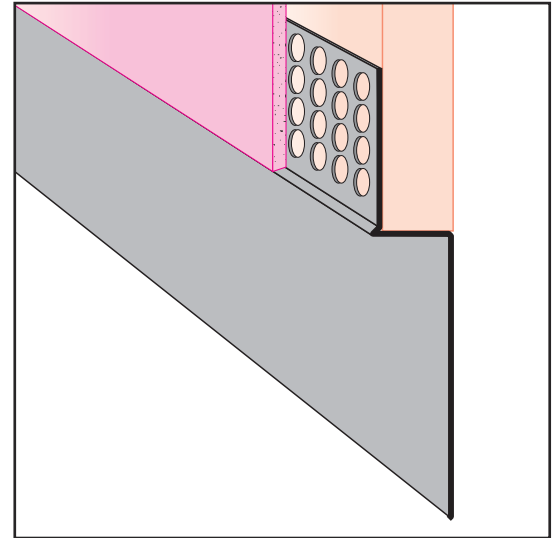
METAL

DTR: Drywall Termination Reveal

- Special Sizes Available, Contact Customer Service For Details
- Available Curved Upon Request
- Available in Aluminum (A), Copper (C), Galvanized Steel (GS), Bonderized (BN), Galvalume® (GVM), Stainless Steel (SS) or Zinc (Z)

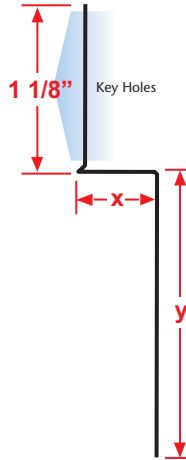
(See Our Materials Guide For Details, Page 40)

Drywall reveal molding used at door frames and wall base application. Includes key holes for drywall mud adhesion.



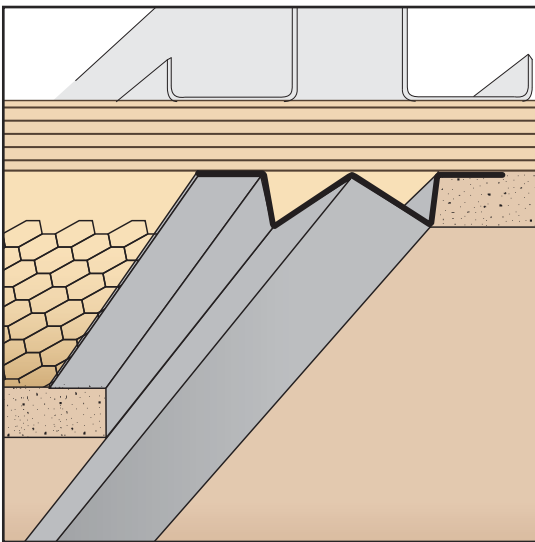
Most Common Sizes

X Sizes: 1/2" or 5/8"
Y Sizes: 1/2", 3/4", 1", 1 1/2", 2", 2 1/2", 3", 3 1/2" or 4"
Length: 120"



Most Common Part Numbers:

DTR012 038SS	DTR: X=1/2, Y=3/8, SS, 10'	DTR058 058	DTR: X=5/8, Y=5/8, GS, 10'
DTR012 312A	DTR: X=1/2, Y=3 1/2, A, 10'	DTR058 112SS	DTR: X=5/8, Y=1 1/2, SS, 10'
DTR058 034AK	DTR: X=5/8, Y=3/4, Fluorophore, A	DTR058 212JTC	DTR: X=5/8, Y=2 1/2, Jet Kote, GS, 10'
DTR058 034SS	DTR: X=5/8, Y=3/4, SS, 10'	DTR058 300JTC	DTR: X=5/8, Y=3, Jet Kote, GS, 10'



DVG: Double V Groove

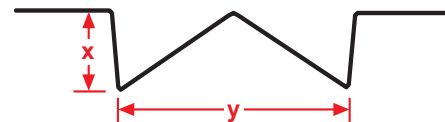
- Special Sizes Available, Contact Customer Service For Details
- Available Curved Upon Request
- Available in Aluminum (A), Copper (C), Galvanized Steel (GS), Bonderized (BN), Galvalume® (GVM), Stainless Steel (SS) or Zinc (Z)

(See Our Materials Guide For Details, Page 40)

A plaster channel screed that creates a decorative reveal with an interesting and unique appearance.

Most Common Sizes

X Sizes: 1/2", 5/8", 3/4", 7/8", 1" or 1 1/2"
Y Sizes: 3/4", 1", 1 1/2", 2", 2 1/2" or 3"
Length: 120"



Most Common Part Numbers:

DVG012 034	DVG: X=1/2, Y=3/4, GS, 10'	DVG034 112	DVG: X=3/4, Y=1 1/2, GS, 10'
DVG034 034	DVG: X=3/4, Y=3/4, GS, 10'	DVG034 200	DVG: X=3/4, Y=2, GS, 10'
DVG034 034Z	DVG: X=3/4, Y=3/4, Z, 10'	DVG078 034SS	DVG: X=7/8, Y=3/4, SS, 10'
DVG034 100	DVG: X=3/4, Y=1, GS, 10'	DVG078 100	DVG: X=7/8, Y=1, GS, 10'