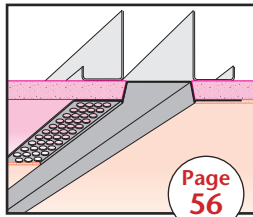
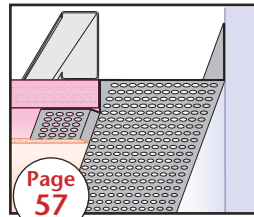


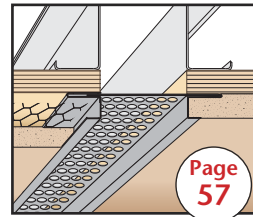
DVG:
Double V Groove



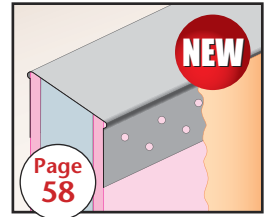
DWR:
Drywall Reveal



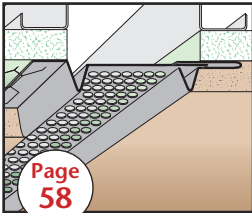
DWT:
Drywall Wall Trim



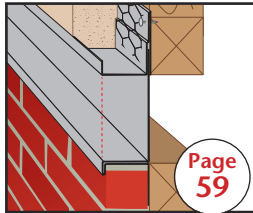
ECS: Expansion
Channel Screed (#40) -
2 Piece



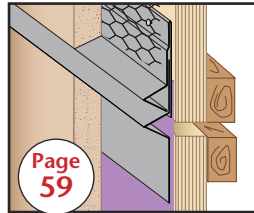
ECX:
End Cap



EVS:
Expansion Vent Screed
2 Piece



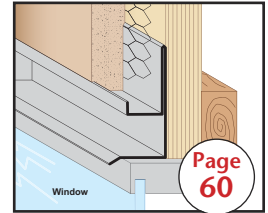
EWC: Expansion Water-
Resistant Channel
2 Piece



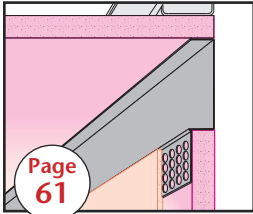
EWR: Expansion Water-
Resistant Reveal
2 Piece



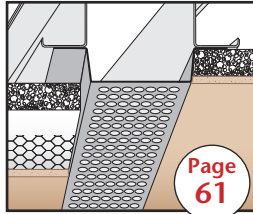
FAS-RBR-STRAP:
Strap
(Rated Base Reveal)



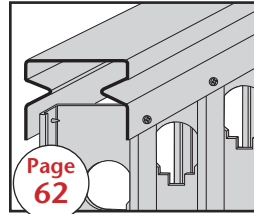
FDM:
F-Drip Mold



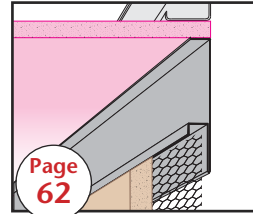
FDR:
F Drywall Reveal



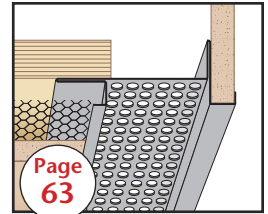
FEV:
Flush Edge Vent



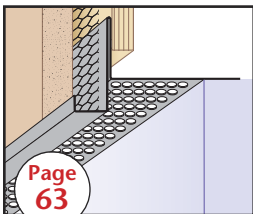
FLT:
Flexible Trak



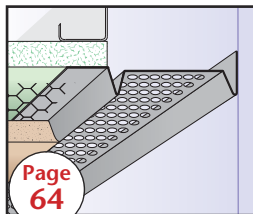
FRM:
F Reveal Mold



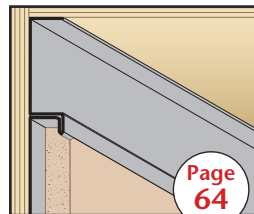
FSM:
Fascia Soffit Mold



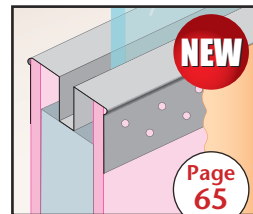
FTM:
Fascia Transition
Mold



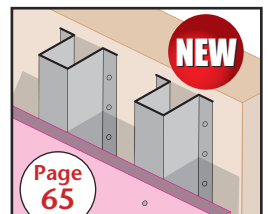
FVM:
F Vent Mold



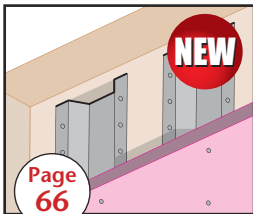
FWC:
F Water-Resistant
Channel



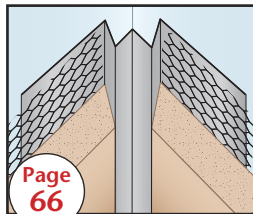
GECC:
Glazing End Cap



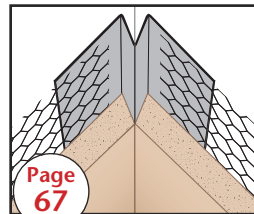
H-C:
Custom Hat
Channel



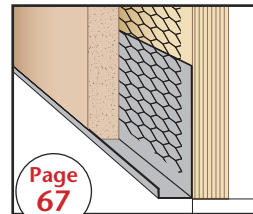
H-C/LP:
Custom Hat
Channel Low Profile



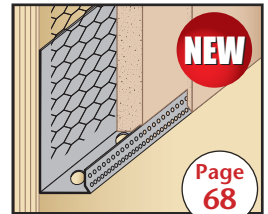
ICR:
Inside Corner
Reveal



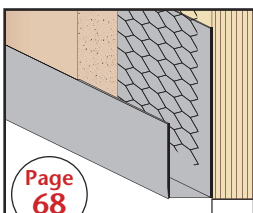
ICT:
Inside Corner Trim



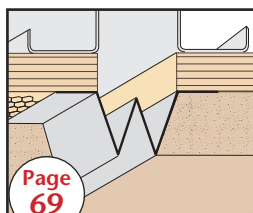
J-B:
J Bead



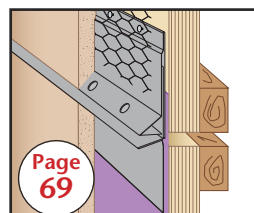
J-B88: Long
Flange J Bead



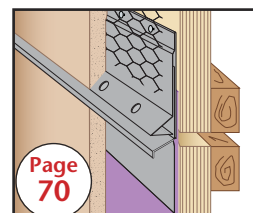
JCB:
J Caulking Bead



M-S:
M Screed



MSC: M-Slide Expansion
Joint™ - 2 Piece



MSX: M-Slide Expansion
Joint™ - 2 Piece



N-S:
Notched Stud