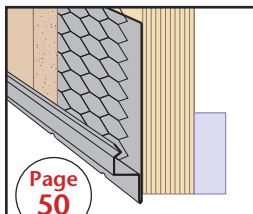


Superior Moisture Management™ By Stockton Products™

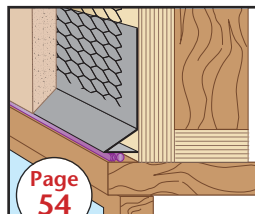
SUPERIOR MOISTURE PROTECTION™

Stockton Products offers several profiles for water management and protection. One and two-piece products offer design features that mitigate the concern of moisture penetration in a horizontal condition. All products come standard in 26 gauge G90 galvanized. Available in galvanized, Bonderized, Galvalume®, zinc, aluminum, copper and stainless steel. Sold in 10 Ft. lengths.



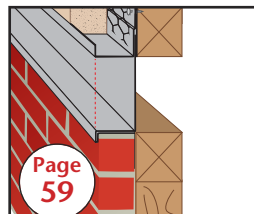
Page 50

BSS:
Blind Stop



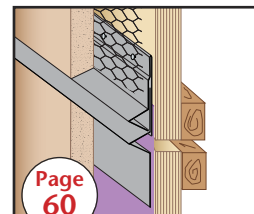
Page 54

DHF:
Drip Head Flashing (#6)



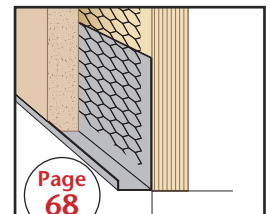
Page 59

EWC: Expansion Water-Resistant Channel - 2 Piece



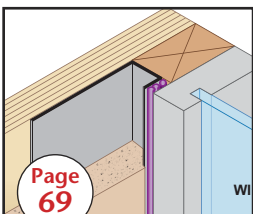
Page 60

EWR: Expansion Water-Resistant Reveal - 2 Pc.



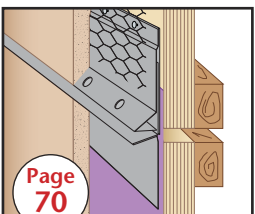
Page 68

J-B:
J Bead



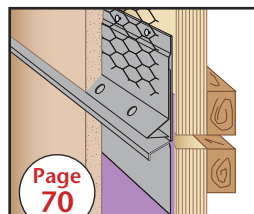
Page 69

JCB:
J Caulking Bead



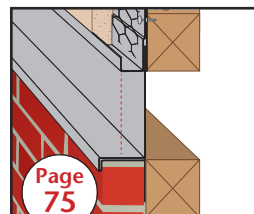
Page 70

MSC: M-Slide Expansion Joint™ - 2 Piece



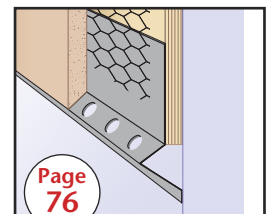
Page 70

MSX: M-Slide Expansion Joint™ - 2 Piece



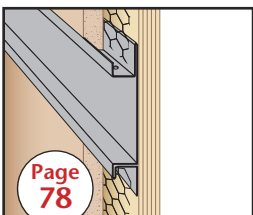
Page 75

OWC: Offset Water-Resistant Exp. Channel - 2 Pc



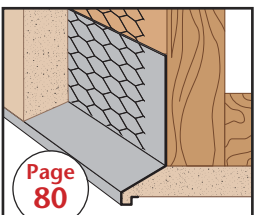
Page 76

OWS: Offset Weep Screed



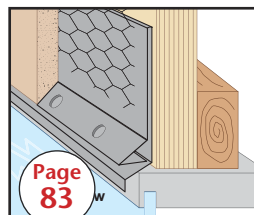
Page 78

PWC:
Plaster Water-Resistant Channel



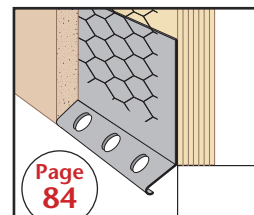
Page 80

SDE
#12 Soffit Drip Edge™



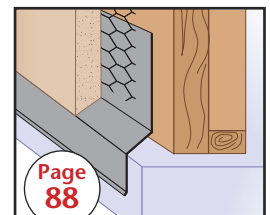
Page 83

SSF: Stucco Screed Flashing (#3)



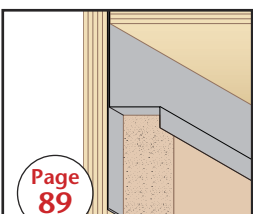
Page 84

SST: Stucco Stop (#36)



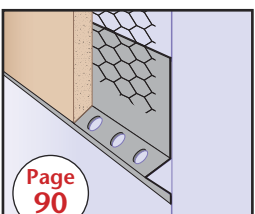
Page 88

TSF: Transition Step Flashing



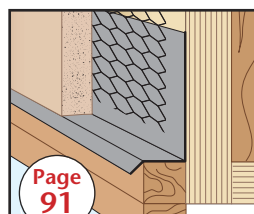
Page 89

TWM:
T Water-Resistant Molding



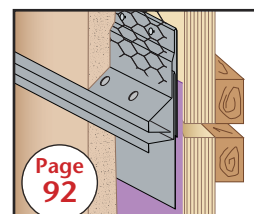
Page 90

W-S: Weep Screed (#7)



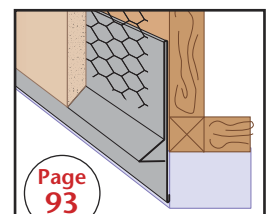
Page 91

WTP: Window Termination Point



Page 92

WXJ: Water Management Expansion Joint - 2 Piece



Page 93

XLF: XL Foundation Screed