



BNSF: Bullnose Short Flange

- Available In 7/16" and 7/8" Radius
- Available in Galvanized or Stainless Steel

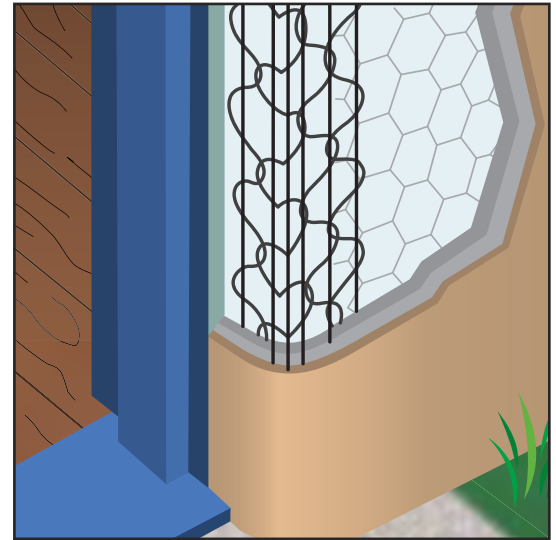
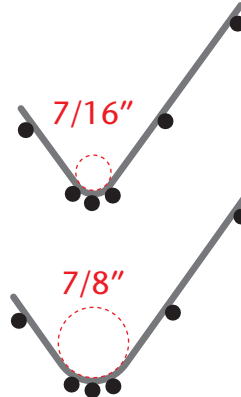
This product combines the features of regular Bullnose and Short-Flange. It is used with Spanish or Mediterranean architecture for rounded corners, sills and ledges. It has a 2 3/8" leg and a 1 1/2" leg and comes in both a 7/16" radius (ping pong ball size) and 7/8" radius (tennis ball size). Extra nose wire offers increased rigidity and stability.

Per Carton

Total Feet: 400'

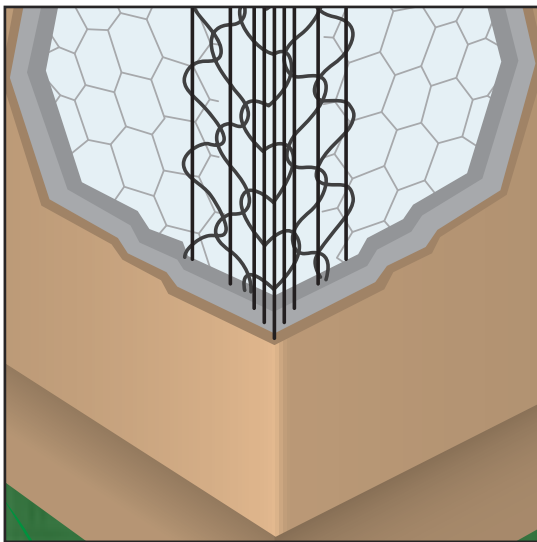
Pieces: 40

Length: 10'



Most Common Part Numbers:

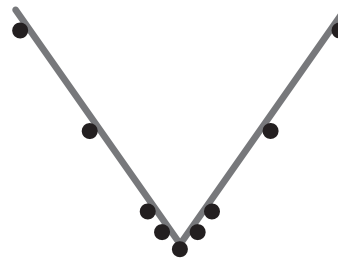
10BNSF716	Bullnose Short-Flange: 7/16" Bullnose, GS, 10'
10BNSF78	Bullnose Short-Flange: 7/8" Bullnose, GS, 10'
10SSBNSF716	Bullnose Short-Flange: 7/16" Bullnose, SS, 10'
10SSBNSF78	Bullnose Short-Flange: 7/8" Bullnose, SS, 10'



CA: CornerAid®

- Available in Galvanized or Stainless Steel

The premier product used for exterior corner reinforcing with conventional 3-coat 7/8" stucco. It features a five nose wire configuration that develops a strong, mechanical bond and a solid plaster corner. Full nine-wire construction yields a rigid straight corner. Available in stainless steel to be used with absolute confidence in high humidity and salt air environments. Extra nose wires provide increased structural rigidity.



Per Carton

Total Feet: 400'

Pieces: 40

Length: 10'



Most Common Part Numbers:

10CA	CornerAid®: GS, 10'
10SSCA	CornerAid®: SS, 10'