



CUSTOM LENGTHS AVAILABLE!

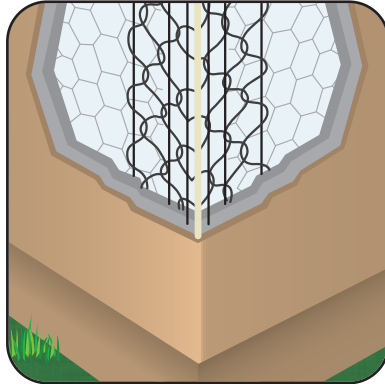
Stockton Custom Fabrication

877-786-2587

custom@StocktonProducts.com



PRODUCTS™

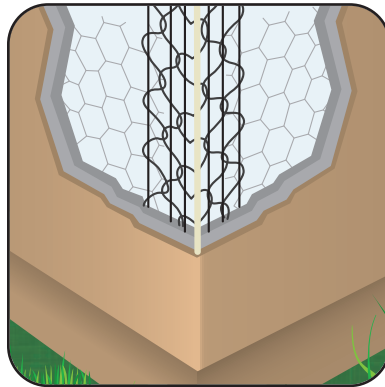


PNLF: Plastic Nose Long-Flange

• Available in Galvanized or Stainless Steel
Designed for extra thick fireproofing. This product is engineered for exterior or interior reinforcing with up to 2 3/8" fireproofing material. It has wide 3 1/4" legs. Available in stainless steel to be used with absolute confidence in high humidity and salt air environments. Recommended for use with acrylic finishes. Extra nose wires provide increased structural rigidity.

Most Common Part Numbers

PNLF10	PNLF: GS, 10'
PNLF10SS	PNLF: SS, 10'

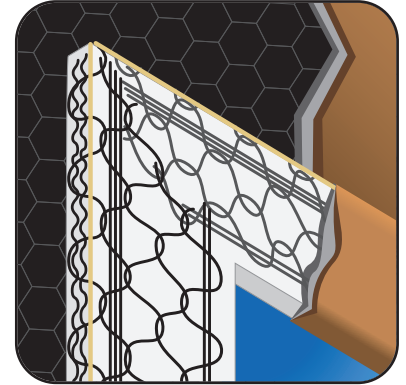


PNSA: Plastic Nose StockAid®

• Available in Galvanized or Stainless Steel
Plastic Nose StockAid® is the lower cost, three nose wire version of plastic nose CornerBead. It is also used by the fireproofing industry for boxed and contoured "I" beams. Nominally 2 3/8" legs. Available in stainless steel to be used with absolute confidence in high humidity and salt air environments. Recommended for use with acrylic finishes.

Most Common Part Numbers

PNSA10	PNSA: GS, 10'
PNSA10SS	PNSA: SS, 10'

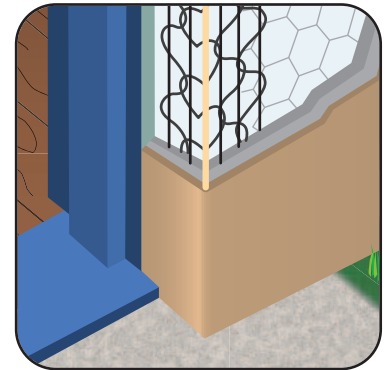


PNPOA: Plastic Nose PopOutAid™

• Available in Galvanized or Stainless Steel
The plastic nose version of our PopOutAid™. Used to form decorative pop outs around windows and doors as well as other ornamental trim details. Unique wire pattern and shape provides excellent "Keying" of the stucco to the welded steel when forming and finishing the pop out. The plastic nose provides a depth guide that assures proper embedment of the wire in the brown coat and extra confidence in harsh climates and environments.

Most Common Part Numbers

PNPOA10	PNPOA: GS, 10'
PNPOA10SS	PNPOA: SS, 10'



PNSF: Plastic Nose Short Flange

• Available in Galvanized or Stainless Steel
This is the standard short flange with a high impact, non-rusting plastic nose and is excellent for heavy rain, high humidity and salt air climates. It is also useful to the fireproofing industry for boxed and contoured "I" beams. Shaped for exterior corners on doors, windows and panel systems where a short flange or stop is needed. It offers one nominally 2 3/8" leg and one short 1 1/2" leg. Available in stainless steel to be used with absolute confidence in harsh environments. Recommended for use with acrylic finishes.

Most Common Part Numbers

PNSF10	PNSF: GS, 10'
PNSF10SS	PNSF: SS, 10'