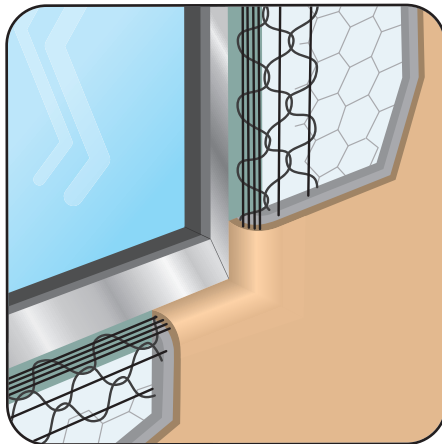


BNII: BullNose II

- Available in Galvanized or Stainless Steel
- Used when the strongest rounded corners are desired. Comes with a standard 7/16" radius (ping pong ball size). Nominally 2 3/8" legs. DoubleWire has an additional line wire on the outside edges to provide additional nail points. Extra nose wires provide increased structural rigidity.

Most Common Part Numbers

BNII71610	BNII: 7/16" Bullnose, GS, 10'
BNII71610SS	BNII: 7/16" Bullnose, SS, 10'

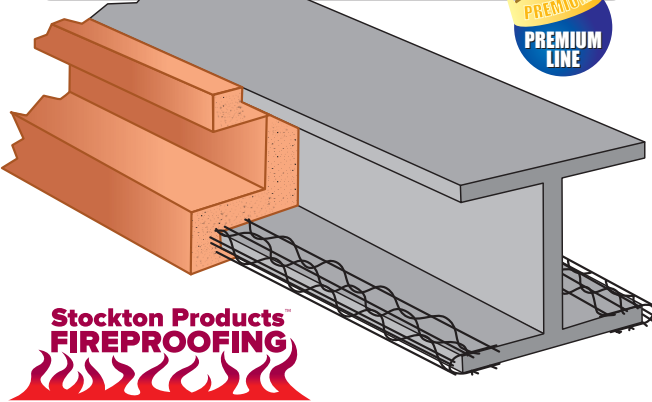
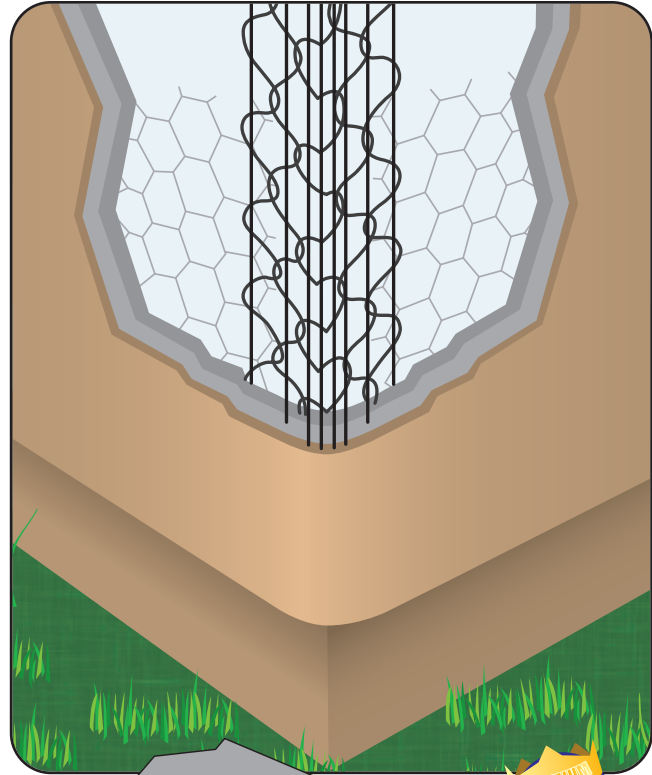


BNS: BullNose Stop

- Available in Galvanized or Stainless Steel
- A short stop for rounded lips and edges around doors, windows and wainscoting. It has one nominally 2 3/8" and one short 1/2" leg. Available in stainless steel to be used with absolute confidence in high humidity and salt air environments.

Most Common Part Numbers

BNS7	BNS: GS, 7'
BNS7SS	BNS: SS, 7'



BNR: BullNose

- Available In 7/8" Radius
 - Available in Galvanized or Stainless Steel
- Used when a larger radius rounded corners are desired. A larger 7/8" radius (tennis ball size). The 7/8" creates a more rounded Spanish or Mediterranean architectural look. Nominally 2 3/8" legs. Available in stainless steel to be used with absolute confidence in high humidity and salt air environments.

Most Common Part Numbers

BNR7810	BNR: 7/8" Bullnose, GS, 10'
BNR7810SS	BNR: 7/8" Bullnose, SS, 10'