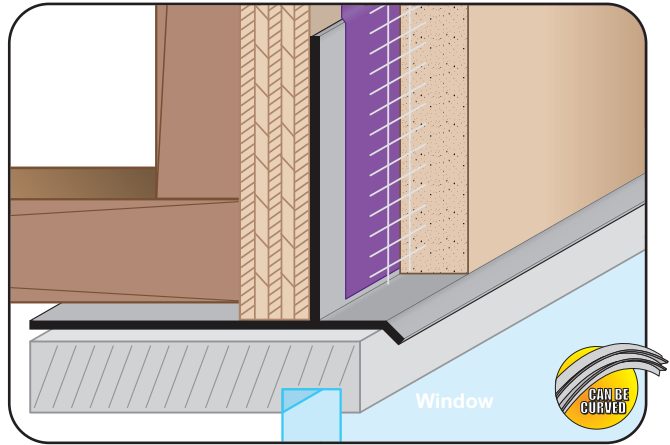


FPM: F Plaster Molding

- Available With 1/8" x 1" Vent Slots or No Vents
- Available With 1/8" Weep Holes or No Weep Holes
- Available Curved Upon Request
- Available in Aluminum Alloy (6063 T-5)

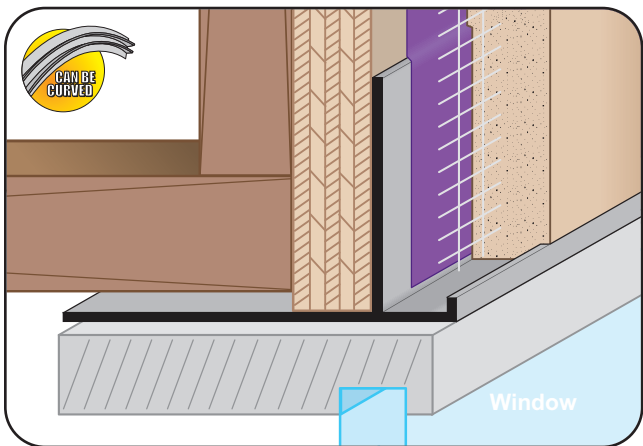
A plaster stop/control screed for conventional 3-coat stucco, used at the top or base of columns, the top of walls at the ceiling, or at the base to create a reveal. Also used at the top of windows to permit the continuation of a horizontal reveal at the window line.



FRWDM: Facia/Recessed Window Drip Molding

- Available Curved Upon Request
- Available in Aluminum Alloy (6063 T-5)

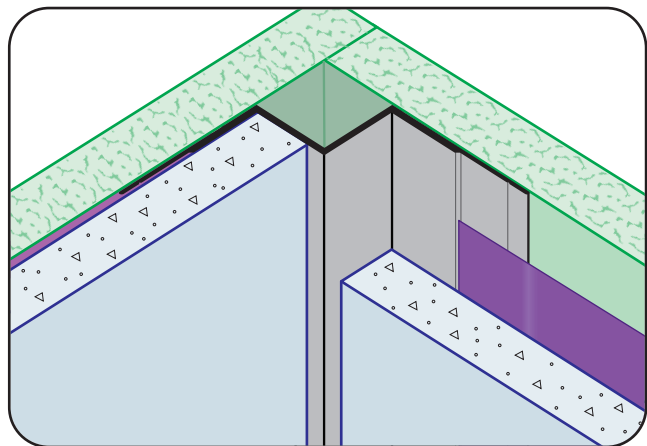
A plaster stop for fascia/soffit corner conditions that provides a 3 1/8" reveal leg with a drip edge for recessed window conditions where a drip edge is required. Can be also be used when a caulking leg is required for backer rod and sealant.



FRWM: Facia/Recessed Window Molding

- Available Curved Upon Request
- Available in Aluminum Alloy (6063 T-5)

A plaster stop for fascia/soffit corner conditions that provides a 3 1/8" reveal leg for recessed windows. Can be used when a caulking leg is required for backer rod and sealant.



IC-FCP: Inside Corner for FCP

- Available in Aluminum Alloy (6063 T-5)
- Used in an inside corner condition where two Fiber Cement Panels (also known as hardie board) meet.
Note: Attach panel per manufacturer's recommended installation instructions.