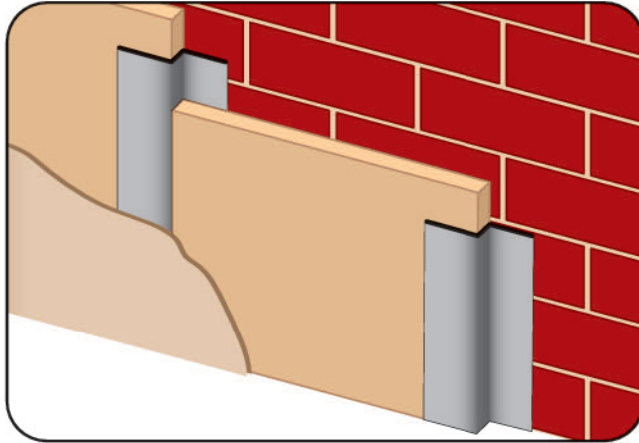




CUSTOM SIZES AVAILABLE!

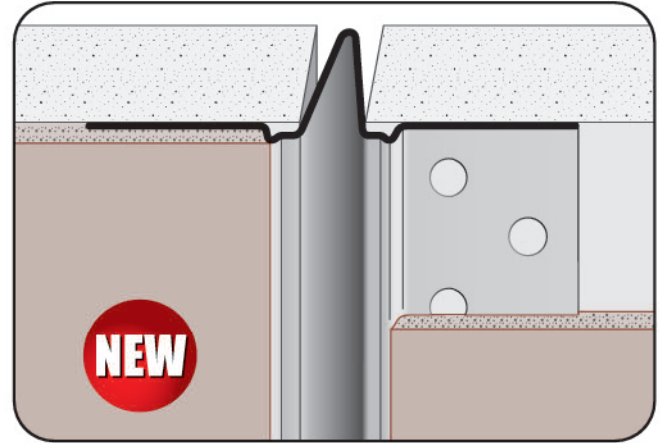
Stockton Custom Fabrication
877-786-2587
custom@StocktonProducts.com



Z-B/LP: Custom Z-Bar Low Profile

- Available in Aluminum, Copper, Galvanized Steel, Bonderized, Galvalume®, Stainless Steel or Zinc

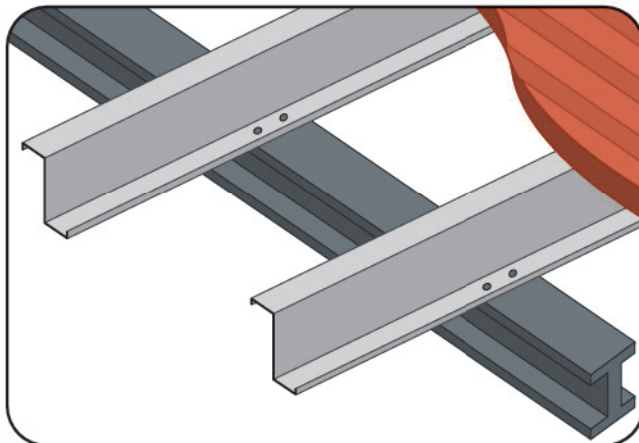
Stockton's Custom Z-Bar Low Profile features a 1/4" step. The small tight Z provides the opportunity to use thinner materials when the project calls for it. Provides rigid insulation and attachment of insulation, drywall or veneer to the interior of masonry walls. Z-Bars are generally used vertically to hold a cover materials against a wall to prevent dampness or resurface with a difference material.



ZCJ: 093 Zinc Control Joint

- Available in Zinc

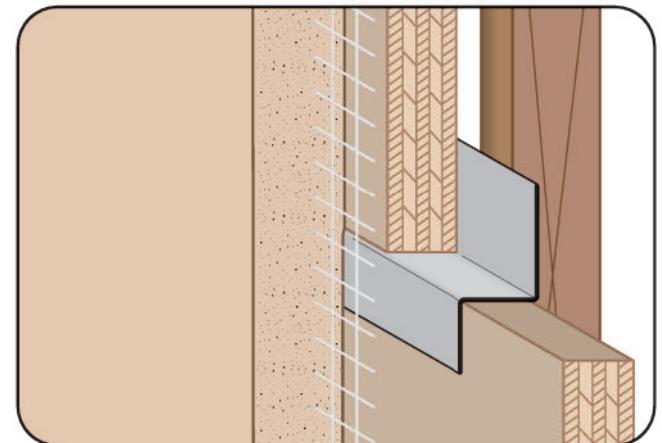
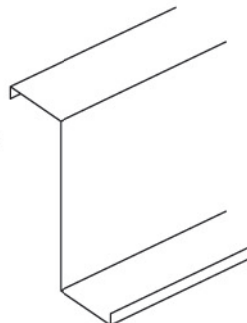
093 Zinc Control Joint is designed for both interior plaster applications, and drywall applications allowing for controlled expansion and contraction of the ceiling or wall finish. Manufactured from 26 ga. zinc, and formed to exacting tolerances, the release tape on the joint protect the profile to provide for a clean edge in both plaster and veneer finishes.



Z-P: Custom Z-Purlin

- Available in Galvanized Steel

Z-Purlin typically refers to roof framing members that span parallel to the building eave and support the roof decking or sheeting. The Z-Purlins are supported by the roofs cross beams or walls.



Z-T: Z Trim

- Available Curved Upon Request
- Available in Aluminum, Copper, Galvanized Steel, Bonderized, Galvalume®, Stainless Steel or Zinc

Used to properly seal and join two pieces of plywood and other conditions where a "Z" shape is required.

