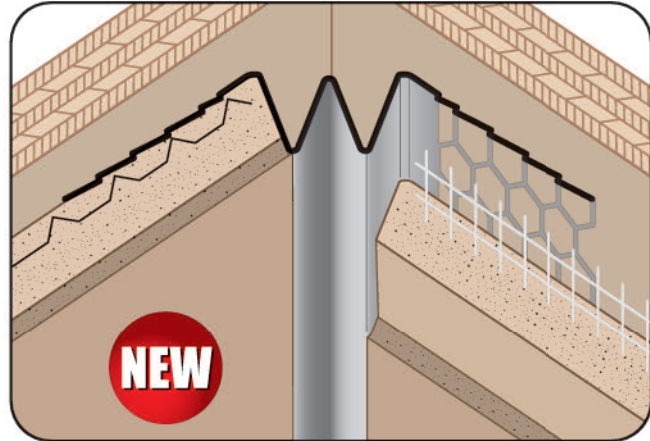


XDV: #15 Double V Control Joint

- Features Expanded Metal Flanges
 - Available in Galvanized Steel (GS) 26 ga. G60
- #15 Double V Control joints are used to relieve stresses of expansion and contraction of minor thermal movement in plaster walls and ceilings. This inconspicuous profile provides stress relief and finishing point for the top color coat. This product has expanded flanges on both sides for proper keying of the scratch and brown coat.



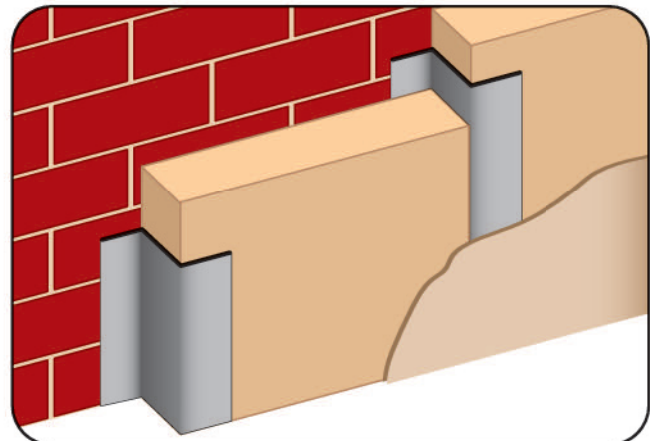
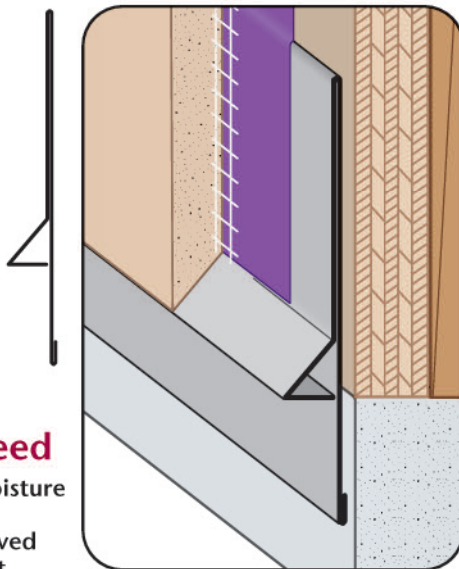
XEC: #30 Expansion Control Joint

- Features Expanded Metal Flanges
 - Available in Galvanized Steel (GS) 26 ga. G60
- #30 Expansion Control Joints are used to relieve stresses of expansion and contraction of minor thermal movement at the corners of plaster walls and ceilings. This inconspicuous profile provides stress relief and finishing point for the top color coat. This product has expanded flanges on both sides for proper keying of the scratch and brown coat.

XLF: #7 Extended Weep Screenshot

- Superior™ Moisture Protection
 - Available Curved Upon Request
 - Available in Aluminum, Copper, Galvanized Steel, Bonderized, Galvalume®, Stainless Steel or Zinc
- Stucco installation guidelines require stucco to be held up off of hardscape. Provides an extended back leg to protect waterproof membranes.

Note: Weep holes are available in some configurations. Please call customer service for details.



Z-B: Custom Z-Bar

- Available in Aluminum, Copper, Galvanized Steel, Bonderized, Galvalume®, Stainless Steel or Zinc
- Z-Bar provides a method of attaching rigid insulation and other material.

